

# AMES SHOVEL AND TOOL CO.

BOSTON, U.S.A.

Catalog No. 152



*Branches*

OLIVER AMES & SONS CORP.  
T. ROWLAND'S SONS, INC.  
GEORGE GRIFFITHS CO.

THE H. M. MYERS CO.  
WRIGHT SHOVEL CO.  
ST. LOUIS SHOVEL CO.

*Combined Catalog No. 152*  
OF  
SHOVELS, SPADES and SCOOPS

*Manufactured by*

AMES SHOVEL AND TOOL COMPANY

Ames Building, BOSTON, MASS., U. S. A.

*Owner of*

OLIVER AMES AND SONS CORP.  
North Easton, Mass.

T. ROWLAND'S SONS, INC.  
Cheltenham, Pa.

GEORGE GRIFFITHS CO.  
Cheltenham, Pa.

H. M. MYERS CO  
Anderson, Ind.

WRIGHT SHOVEL CO.  
Anderson, Ind.

ST LOUIS SHOVEL CO.  
St. Louis, Mo.

Makers of High Grade Shovels Since 1774

## GUARANTY

We guaranty our products against failure in service due to defects in materials or workmanship.

Any of our products of Grades and Labels listed herein and bearing our identification marks, having failed in service due to imperfections in materials or workmanship, will, after examination at any of our factories, be replaced with similar tools at prices commensurate with the service rendered by the defective tools.

AMES SHOVEL AND TOOL CO.

*Copyright 1926*  
AMES SHOVEL AND TOOL CO.,  
Boston, Mass.

## FOREWORD

THE Ames Shovel and Tool Company owns and operates shovel manufacturing factories located at North Easton, Mass., Cheltenham, Pa., Anderson, Ind. and St. Louis, Mo.; handle producing plants at Oakland and Cumberland Mills, Me., and New Albany, Ind.; and steel rolling mills at Elwood, Ind.

The shovel producing factories are so located that the consuming trade can be served in the quickest possible time, thereby enabling the distributors of the Company to operate with minimum inventories of shovels, spades and scoops. Two of the shovel producing factories are located within trucking distance of tide water, at Boston (North Easton) and Philadelphia (Cheltenham), permitting quick and low-cost deliveries to all points reached by water routes. In addition, the plants of the Company have railroad sidings with connections to the main trunk lines; and the St. Louis plant, by means of the Mississippi River, has splendid service to points south.

The Ames Shovel and Tool Company manufactures only shovels, spades, scoops and allied tools and, by concentration of effort, aims to produce the best tools of these kinds on the market.

Each of the shovel companies listed in this catalog is old in years of service and experience, is thoroughly conversant with the requirements of the trade, and is well able to supply the needs of its customers.

Modernized equipment combined with time-saving devices permits low-cost production, enabling the Company to place on the market high-grade tools at very moderate prices.

A research department, thoroughly equipped with an analytical and physical testing laboratory, has been installed at North Easton, Mass., permitting exacting tests of all parts entering into the construction of its products.

The first shovels manufactured in the United States were made by the Oliver Ames and Sons Corp., which dates back to 1774, and its standards and leadership have been maintained since that time.

With the facilities of these shovel manufacturing plants, all types, styles and grades of shovels, spades and scoops are produced, permitting a concentration of orders and a combination of shipments.

Your particular attention is directed to the original Ames Heavy Double Bend, the most efficient bend yet devised for use in shovel construction; a handle bend which enables the user to produce the greatest amount of work with the least physical effort.

Each of the shovel companies, while operating as a separate corporation, serves as a branch factory and office of the Ames Shovel and Tool Company, and in that capacity serves also as the representative of every other factory of the Company.

Supplies of the principal materials used in the construction of shovels, spades and scoops are assured through the Company's handle plants and steel rolling mills, permitting operations to pre-determined standards and eliminating delays usually caused by inability to secure prompt deliveries of materials from outside sources.

In the preparation of this catalog special thought was given to a clear description and illustration of the many types and kinds of shovels, spades and scoops needed by the various industries and to the simplification of sizes, types and brands.

An index will be found at the end of the catalog—much time can be saved by reference to it.

You are referred to the following pages with the hope that you will find therein all the information necessary for a thorough understanding of this line of merchandise.

## GENERAL PRICES AND TERMS

Prices, terms and conditions covering the sale of the tools listed herein are noted in separate price lists which will be furnished on request.

### PACKING

Shovels, spades and scoops are packed one-half dozen to the bundle; securely tied to assure satisfactory delivery to destination. When specifically so ordered, goods will be burlapped or crated, for cost of which see price lists.

### FINISH AND SPECIAL CONSTRUCTION

UNLESS OTHERWISE ORDERED, GOODS WILL BE SHIPPED IN BLACK OR NATURAL FINISH

For extra cost of special finish see price lists. Special constructions such as perforated blades, extra length blade straps, shoulder straps, special handle lengths, etc., can be furnished, for cost of which see price lists.

### ORDERS AND SHIPMENTS

Shipments of orders will be made as promptly as the conditions of our factories will permit, but we will not be held responsible for delays due to fires, strikes, accidents or other causes beyond our control.

To assure the best delivery, we request that orders be forwarded to our nearest factory or branch office with the understanding that the whole or part will be relayed to our other factories if the receiving factory is unable to meet the specifications or effect delivery as requested.

For Method of Ordering, please refer to page 74.

**BLACK SHOVELS COST LESS AND WEAR LONGER**

## TRADE-MARKS, GRADES AND LABELS

The labels and names referred to in this catalog are our **TRADE-MARKS**, which are legally protected and guarantee that the goods are of our manufacture.

The Shovels, Spades and Scoops, illustrated and described on the following pages, are manufactured in a number of grades, each designed to meet the needs of the various kinds of work to be performed, and so classified to give a wide price selection.

Each grade is manufactured as such, under detailed specifications prepared for its construction.

Each grade passes through the same general processes of development and inspection, and when completed is first class in all respects and worthy of the service for which it is intended and of the price charged.

**BLACK SHOVELS COST LESS AND WEAR LONGER**

### OLIVER AMES GRADE

The OLIVER AMES Grade is in a class by itself, representing the best in materials and workmanship that can be produced.

In the manufacture of OLIVER AMES shovels, spades and scoops, there is no middle ground; each tool must meet the specifications, tests and inspections without doubt and must be worthy to carry the name OLIVER AMES, the standard in shovel-making since 1774.

There is an OLIVER AMES shovel, spade or scoop for every kind of work, and where low cost of operation is imperative, OLIVER AMES tools are the most economical tools to use.

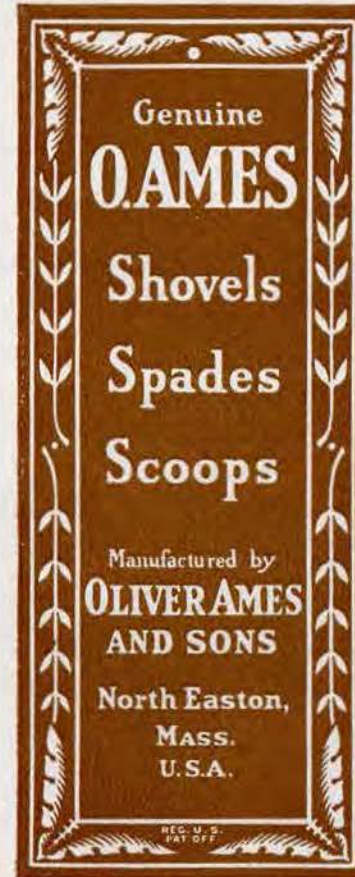
The handles used in OLIVER AMES tools are XX second-growth Northern ash, the best that can be procured—all sanded, waxed and polished.

The blades are fabricated from alloy steel of special analysis, giving to OLIVER AMES tools that degree of toughness that can be obtained only by these special properties. The blades are fully heat treated, resulting in a resistance, both to wear and distortion, that is unequalled in any similar tool.

OLIVER AMES tools are distributed throughout the world, and, due to the demand created by their many years of service, by the superiority of the materials entering into their construction and by the general publicity back of them, are readily sold, and therefore make a most desirable line for distribution.

**BLACK SHOVELS COST LESS AND WEAR LONGER**

### OLIVER AMES LABELS



**EXTRA GRADE**

The Extra Grade is manufactured in practically all types and kinds of shovels, spades and scoops, under the labels and by the companies listed below.

All tools under this grade are equipped with XX grade, second-growth Northern ash handles—sanded, waxed and polished.

The blades of Extra Grade tools are specially treated to resist abrasion and distortion under the hardest service, and due to this special treatment are lighter in gauge and weight and therefore make more efficient tools than tools of which the blades are not so treated.

Extra Grade shovels, spades and scoops are manufactured under the following Brands or Labels:

T. ROWLAND'S SONS, INC., CHELTENHAM, PA.  
**FLINT EDGE**

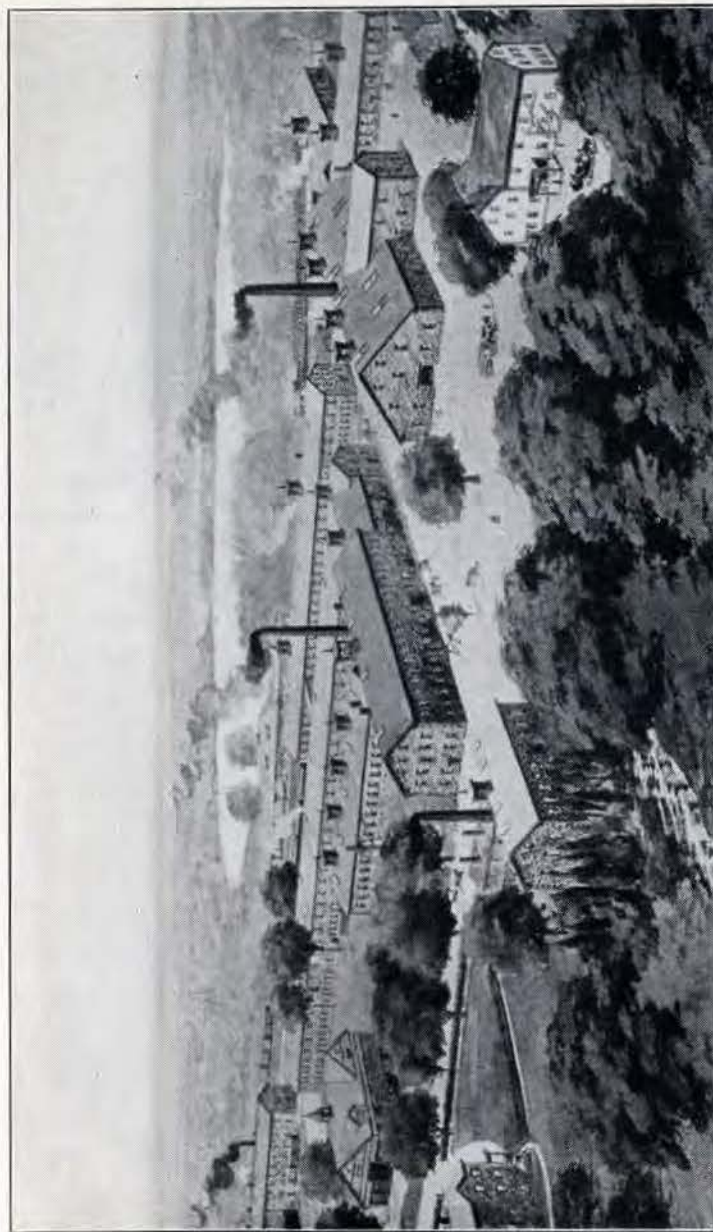
GEORGE GRIFFITHS CO., CHELTENHAM, PA.  
**THOR**

H. M. MYERS COMPANY, ANDERSON, IND.  
**DEFIANCE**

WRIGHT SHOVEL CO., ANDERSON, IND.  
**DREDNOT**

ST. LOUIS SHOVEL CO., ST. LOUIS, MO.  
**ST. LOUIS**

**BLACK SHOVELS COST LESS AND WEAR LONGER**



The plant of the Oliver Ames & Sons Corp. North Easton, Massachusetts, one of the shovel plants of the Ames Shovel and Tool Company

**HIGH GRADE**

The High Grade (Class A) is manufactured in practically all types and kinds of shovels, spades and scoops under the labels and by the companies listed below.

The blades of High Grade tools are made of steel of an analysis and gauge to warrant excellent service under hard usage. Northern ash XX handles are used in this grade, thereby giving greatest strength where most needed.

High Grade is all the term implies, and for good, high-class, well-finished, salable tools is everything that can be desired.

High Grade shovels, spades and scoops are manufactured under the following brands or labels—those listed in **Bold Type** being the most popular:

OLIVER AMES & SONS CORP, NORTH EASTON, MASS.

**CARTER**,—also BLAIR, DAY, PORTER (steel edge), REED, SANDERSON.

T. ROWLAND'S SONS, INC., CHELTENHAM, PA.

**CHELTENHAM**,—also APOLLO (all steel handle scoops), BARTLETT, DENIM, FISHER, HOLMES.

GEORGE GRIFFITHS CO., CHELTENHAM, PA.

**GRIFFITHS**,—also APOLLO (all steel handle scoops), DOUGLAS.

H. M. MYERS COMPANY, ANDERSON, IND.

**MYERS**,—also BEAVER FALLS.

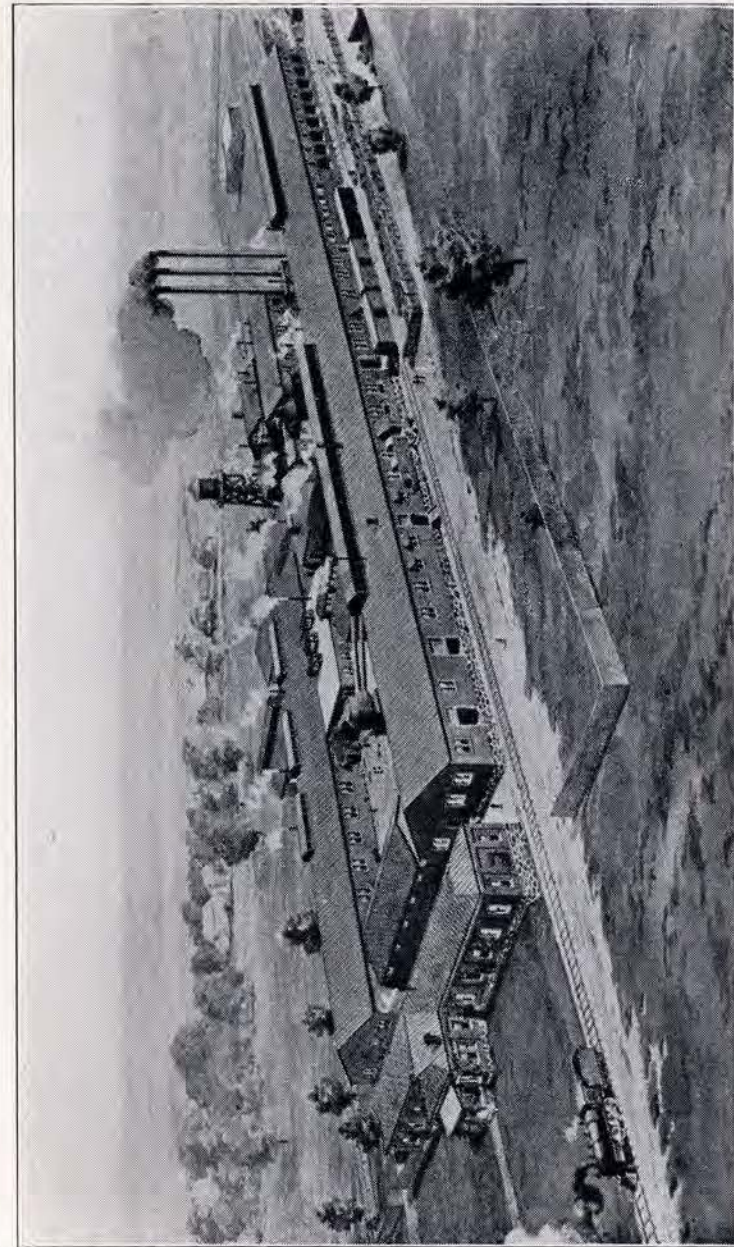
WRIGHT SHOVEL CO., ANDERSON, IND.

**WRIGHTO**, (solid socket excl.),—**ENDURO**,—also VATERLAND (Diamond Point spade), **WRIGHT'S EXTRA**

ST. LOUIS SHOVEL CO., St LOUIS, Mo.

**BLACK DIAMOND**, (solid socket excl.),—**BIRGE**,—also **HOLTON**, VATERLAND (Diamond Point spade).

**BLACK SHOVELS COST LESS AND WEAR LONGER**



The plant of the Wright Shovel Company, Anderson, Indiana, one of the shovel plants of the Ames Shovel and Tool Company

**INTERMEDIATE GRADE**

The Intermediate Grade (Class B) is manufactured in practically all types and kinds of shovels, spades and scoops under the labels and by the companies listed below.

Intermediate Grade tools are designed to meet the needs of those requiring serviceable tools for general use and where price is a consideration. Northern ash X grade handles are used for Intermediate Grade tools and the blades are constructed of steel of an analysis and thickness to deliver service commensurate with the prices charged for this grade.

Intermediate Grade shovels, spades and scoops are manufactured under the following brands or labels, the more popular brands being listed in **Bold Type**:

OLIVER AMES & SONS CORP., NORTH EASTON, MASS.

A. LEE,—also CARR, HADWIN.

T. ROWLAND'S SONS, INC., CHELTENHAM, PA.

HELMET,—also BAXTER, BOARDMAN, DELVE, DEXTER, GORDON, ROWLAND, WEBER, WILSON.

GEORGE GRIFFITHS CO., CHELTENHAM, PA.

VALLEY FORGE,—also BAIRD, HARLAN, LANE, PACKER, WEBSTER.

H. M. MYERS CO., ANDERSON, IND.

KEELER,—also EXCELSIOR, PILGRIM.

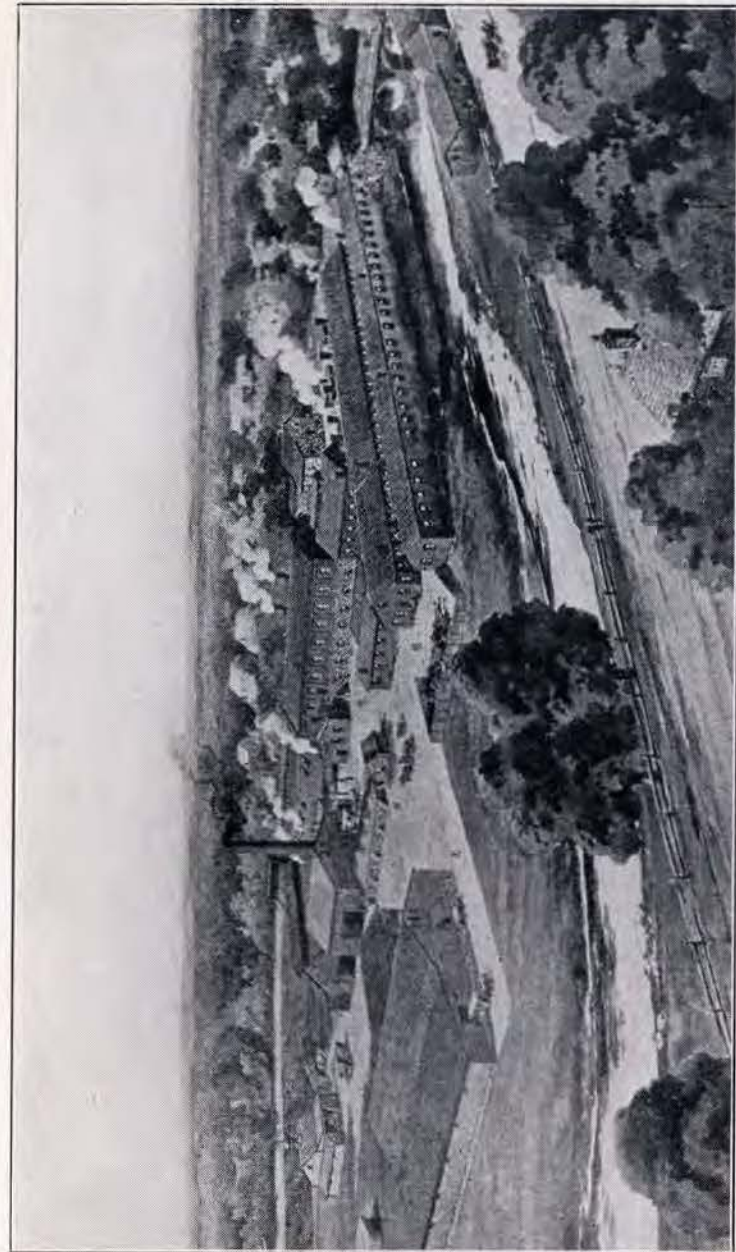
WRIGHT SHOVEL CO., ANDERSON, IND.

VIM,—also IDEAL, WRIGHT SHOVEL Co.

ST. LOUIS SHOVEL CO., ST. LOUIS, MO.

NICHOLSON,—also BYRNE, CRANE, THORN.

BLACK SHOVELS COST LESS AND WEAR LONGER



The plant of T. Rowland's Sons, Inc., Cheltenham, Pennsylvania, one of the shovel plants of the Ames Shovel and Tool Company

**COMMON GRADE**

The Common Grade (Class C) is manufactured in practically all types and kinds of shovels, spades and scoops under the labels and by the companies listed below.

Common Grade tools are all that the term implies, being sold for final distribution to those desiring shovels, spades or scoops for intermittent service.

The specifications of manufacture are similar to those of the higher grades, differing from those of the higher grades, however, in the quality and thickness of the blades, in the quality and finish of the handles and in the class of workmanship.

The Common Grade shovels, spades and scoops are not recommended for hard service and where low cost of operation is an important consideration.

Common Grade shovels, spades and scoops are manufactured under the following brands or labels, the more popular brands being listed in **Bold Type:**

**OLIVER AMES AND SONS CORP., NORTH EASTON, MASS.  
MASSACHUSETTS,**—also ADAMS (steel edge), NAYLOR.

**T. ROWLAND'S SONS, INC., CHELTENHAM, PA.  
GOLD RIBBON,**—also CLEVELAND, FREEMAN, MASTER, METEOR,  
MOON, THOMAS, WAYDE, XXX.

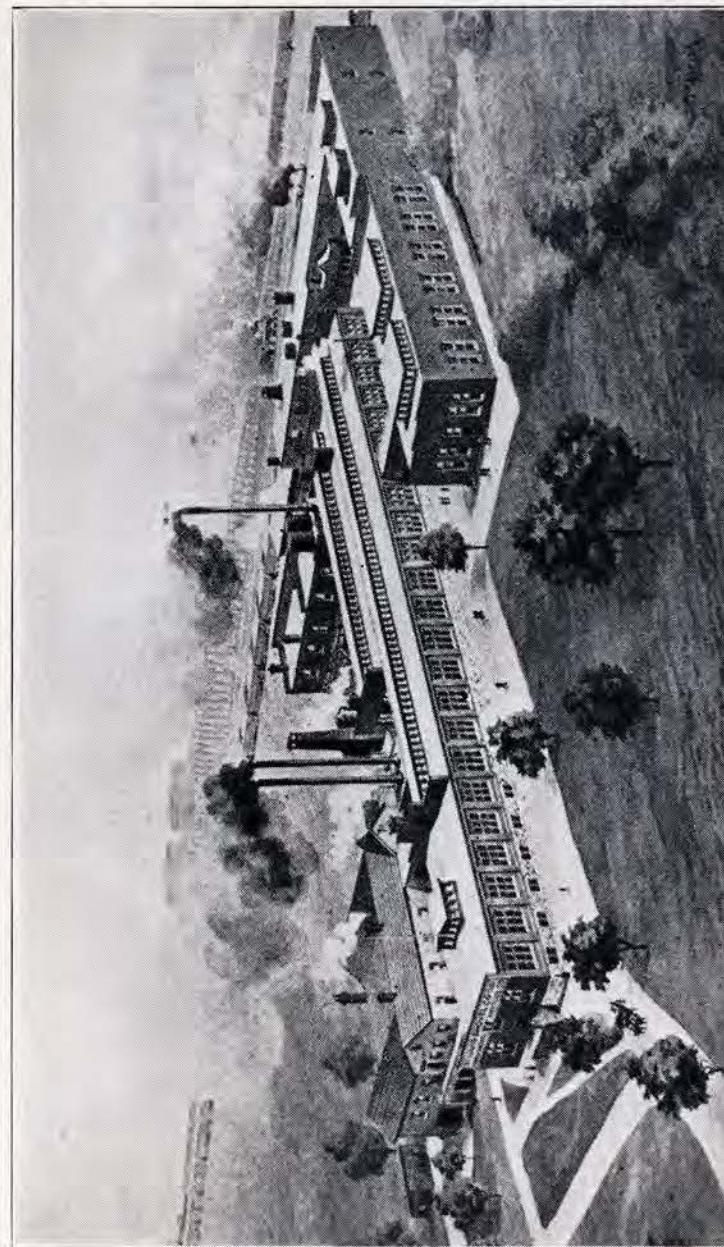
**GEORGE GRIFFITHS CO., CHELTENHAM, PA.  
GRIFROW,**—also PENN, SELLERS, STONE.

**H. M. MYERS CO., ANDERSON, IND.  
FALLS CITY,**—also MILLER, TRI-ME.

**WRIGHT SHOVEL CO., ANDERSON, IND.  
SYCAMORE,** (solid shank, excl.), **ANDERSON,**—also CLIMAX,  
FAVORITE, UNION SHOVEL CO., VIGO.

**ST. LOUIS SHOVEL CO., ST. LOUIS, MO.  
PEERLESS,**—also BELMONT, CARPENTER, VIGO.

**BLACK SHOVELS COST LESS AND WEAR LONGER**



The plant of the St. Louis Shovel Co., St. Louis, Missouri, one of the shovel plants of the Ames Shovel and Tool Company.



**WELDED PLAIN BACK SHOVELS**

**STANDARD SQUARE AND ROUND POINT BLADES**

The Welded Plain Back Shovels (Antrim Patent) are designed and constructed for general and hard service. The blades are formed and sized from sheet steel of an analysis to best meet the conditions under which they are to be used and in accordance with the classification under which they are sold. The front and back straps are welded to and made an integral part of the blade, with the use of steel of an analysis which will permit shaping to the handle.

Shovels of this construction are light and strong, having smooth blade surfaces both front and back and in general presenting a neat, salable appearance.

The Standard Square and Round Point Welded Plain Back Shovels are manufactured in five grades, viz., OLIVER AMES, Extra, High, Intermediate and Common Grades, for descriptions of which see pages 6, 8, 10, 12 and 14, respectively.

The following sizes and types equipped with AMES Split Dee Handles, I-D-L Dee Handles, Sturd-E Dee Handles, Wood Dee Handles, and Regular 4½ foot Long Handles are regularly carried in stock. For descriptions and illustrations of handles, see pages 70 and 71.

Nominal Size	LIST NUMBERS	
	Square Point	Round Point
2	12 S	12 R
3	13 S	13 R
4	14 S	14 R
6	16 S	16 R

For Method of Ordering by List Numbers and Handle Symbols, see page 74.

For Method of Measuring Blade Dimensions and Lifts, see pages 72 and 73.

**BLACK SHOVELS COST LESS AND WEAR LONGER**

**WELDED PLAIN BACK SHOVELS**  
**STANDARD SQUARE AND ROUND POINT BLADES**



**FLINT EDGE**  
No. 2 Round Point  
Welded Plain Back  
Shovel equipped with  
Sturd-E Dee Handle  
**C - 12 R**

**DREDNOT**  
No. 2 Square Point  
Welded Plain Back  
Shovel equipped with  
I-D-L Dee Handle  
**B - 12 S**

**OLIVER AMES**  
No. 2 Square Point  
Welded Plain Back  
Shovel equipped with  
Ames Split Dee Handle  
**A - 12 S**  
*(Large Reproduction)*

**DEFIANCE**  
No. 2 Square Point  
Welded Plain Back  
Long Handle Shovel  
**L - 12 S**

**ST. LOUIS**  
No. 2 Round Point  
Welded Plain Back  
Long Handle Shovel  
**L - 12 R**

See facing page for descriptions, sizes, grades, etc

**SOLID SHANK SHOVELS**

**SOLID SOCKET AND SPLIT SOCKET TYPES  
STANDARD SQUARE AND ROUND POINT BLADES**

Solid Shank Shovels are designed and constructed to meet the need of light-weight, nicely balanced, general purpose shovels.

The blade and shank are rolled from a single block of steel and so formed that the blade gradually tapers to the edges, permitting a thick center and providing strength and firmness where needed.

Standard Square and Round Point Solid Shank Shovels are manufactured with two types of sockets, the solid socket and the split socket.

The Solid or Closed Socket type provides a firm, strong receptacle for the handle, the handle being securely held by a steel wedge, thus permitting quick replacement of handle when necessary. The Solid Socket type is manufactured in three grades, viz., OLIVER AMES, Extra and High Grades, for descriptions of which see pages 6, 8 and 10, respectively.

The Split Socket or Open Back type is formed around the handle and securely riveted to the handle. The Split Socket type is manufactured in two grades, viz., the Intermediate and Common Grades, for descriptions of which see pages 12 and 14, respectively.

The blades of all Solid Shank Shovels, both Solid Socket and Split Socket types, are specially treated to resist abrasion and distortion.

The following sizes and types, equipped with AMES Split Dee Handles, I-D-L Dee Handles, Sturd-E Dee Handles, Wood Dee Handles and Regular 4½ foot Long Handles are regularly carried in stock. For descriptions and illustrations of handles, see pages 70 and 71.

Nominal Size	LIST NUMBERS	
	Square Point	Round Point
1	21 S	21 R
2	22 S	22 R

For Method of Ordering by List Numbers and Handle Symbols, see page 74  
For Method of Measuring Blade Dimensions and Lifts, see pages 72 and 73

**BLACK SHOVELS COST LESS AND WEAR LONGER**

**SOLID SHANK SHOVELS**

**STANDARD SQUARE AND ROUND POINT BLADES**



WRIGHTO  
No. 2 Round Point  
Solid Socket type  
Solid Shank Shovel  
equipped with regular  
Wood Dee Handle  
D - 22 R

SYCAMORE  
No. 2 Round Point  
Split Socket type  
Solid Shank Shovel  
equipped with  
I-D-L Dee Handle  
H - 22 R

OLIVER AMES  
No. 2 Square Point  
Solid Socket Shovel  
equipped with Ames  
Split Dee Handle  
A - 22 S  
(Large Reproduction)

CHELTEHAM  
No. 2 Round Point  
Solid Socket Long  
Handle Shovel  
L - 22 R

BLACK DIAMOND  
No. 2 Square Point  
Solid Socket Long  
Handle Shovel  
L - 22 S

See facing page for descriptions, sizes, grades, etc.

**ONE PIECE PLAIN BACK SHOVELS**  
STANDARD SQUARE AND ROUND POINT BLADES



The One Piece Plain Back Shovels (Myers Patent) are manufactured by rolling the blade and straps from a solid steel bar previously sheared to the shape of the trade-mark illustrated above, the base forming the blade and the projections forming the two straps, thereby producing a blade with straps of one piece of steel, free from welds or rivets.

The process used in rolling forms a blade with a thick center, tapering or graduating towards the edges and point, which compensates for the wearing away of the back of the shovel when used, the tool retaining its perfect shape until completely worn out. The blades vary in thickness, analysis and treatment and the handles in quality in accordance with the grade of tool desired.

The Standard Square and Round Point One Piece Plain Back Shovels are manufactured with plain or narrow straps only and are manufactured in three grades, viz., the High, Intermediate and Common Grades, for descriptions of which see pages 10, 12 and 14, respectively.

The following sizes and types, equipped with AMES Split Dee Handles, I-D-L Dee Handles, Sturd-E Dee Handles, Wood Dee Handles and Regular 4½ foot Long Handles are regularly carried in stock. For descriptions and illustrations of handles, see pages 70 and 71

Nominal Size	LIST NUMBERS	
	Square Point	Round Point
2	32 S	32 R
3	33 S	33 R
4	34 S	34 R

For Method of Ordering by List Numbers and Handle Symbols, see page 74.  
For Method of Measuring Blade Dimensions and Lifts, see pages 72 and 73.

**BLACK SHOVELS COST LESS AND WEAR LONGER**

**ONE PIECE PLAIN BACK SHOVELS**  
STANDARD SQUARE AND ROUND POINT BLADES



See facing page for descriptions, sizes, grades, etc.

**RIVETED BACK (BACK STRAP) SHOVELS**  
STANDARD SQUARE AND ROUND POINT BLADES

The Riveted Back Shovels are designed and constructed to meet the requirements of those needing stiff, strong shovels for handling coarse materials, such as stone, gravel, etc.

The blades are cut and formed from sheet steel of a thickness and analysis to fill the specifications of the grade desired.

The front and back straps are cut and formed and securely riveted to the blade and handle, forming a substantial tool to withstand the heaviest kind of work.

Standard Square and Round Point Riveted Back Shovels are manufactured in five grades, viz., the OLIVER AMES, Extra, High, Intermediate and Common Grades, for descriptions of which see pages 6, 8, 10, 12 and 14, respectively.

The following sizes and types, equipped with AMES Split Dee Handles, I-D-L Dee Handles, Sturd-E Dee Handles, Wood Dee Handles and Regular 4½ foot Long Handles are regularly carried in stock. For descriptions and illustrations of handles, see pages 70 and 71.

Nominal Size	LIST NUMBERS	
	Square Point	Round Point
2	42 S	42 R
3	43 S	43 R
4	44 S	44 R
6	46 S	46 R

For Method of Ordering by List Numbers and Handle Symbols, see page 74.  
For Method of Measuring Blade Dimensions and Lifts, see pages 72 and 73.

**BLACK SHOVELS COST LESS AND WEAR LONGER**

**RIVETED BACK (BACK STRAP) SHOVELS**  
STANDARD SQUARE AND ROUND POINT BLADES



BIRGE  
No. 2 Round Point  
Riveted Back Shovel  
equipped with Wood  
Dee Handle  
D - 42 R

DAY  
No. 2 Square Point  
Riveted Back Shovel  
equipped with  
I-D-L Dee Handle  
B - 42 S

OLIVER AMES  
No. 2 Round Point  
Riveted Back Shovel  
equipped with Ames  
Split Dee Handle  
A - 42 R  
(Large Reproduction)

PEERLESS  
No. 2 Round Point  
Riveted Back  
Long Handle Shovel  
L - 42 R

MASSACHUSETTS  
No. 2 Square Point  
Riveted Back  
Long Handle Shovel  
L - 42 S

See facing page for descriptions, sizes, grades, etc.

**HOLLOW BACK SHOVELS**

**STANDARD SQUARE AND ROUND POINT BLADES**

The Hollow Back Shovels are designed to meet the needs of those requiring light, serviceable shovels less in cost than the plain back types.

Hollow Back Shovels are particularly adapted for handling coarse, loose materials, such as stone, slag, gravel, etc. and are not as satisfactory as plain back types in handling clay, loam, concrete, etc., or for digging purposes.

The blade and frog are pressed to shape from sheet steel of a thickness and analysis to fulfill the specifications of the grade desired.

Standard Square and Round Point Hollow Back Shovels are manufactured in five grades, viz., the OLIVER AMES, Extra, High, Intermediate and Common Grades, for descriptions of which see pages 6, 8, 10, 12 and 14, respectively.

The following sizes and types, equipped with AMES Split Dee Handles, I-D-L Dee Handles, Sturd-E Dee Handles, Wood Dee Handles and Regular 4½ foot Long Handles are regularly carried in stock. For descriptions and illustrations of handles, see pages 70 and 71.

Nominal Size	LIST NUMBERS	
	Square Point	Round Point
2	52 S	52 R
3	53 S	53 R
4	54 S	54 R
6	56 S	56 R

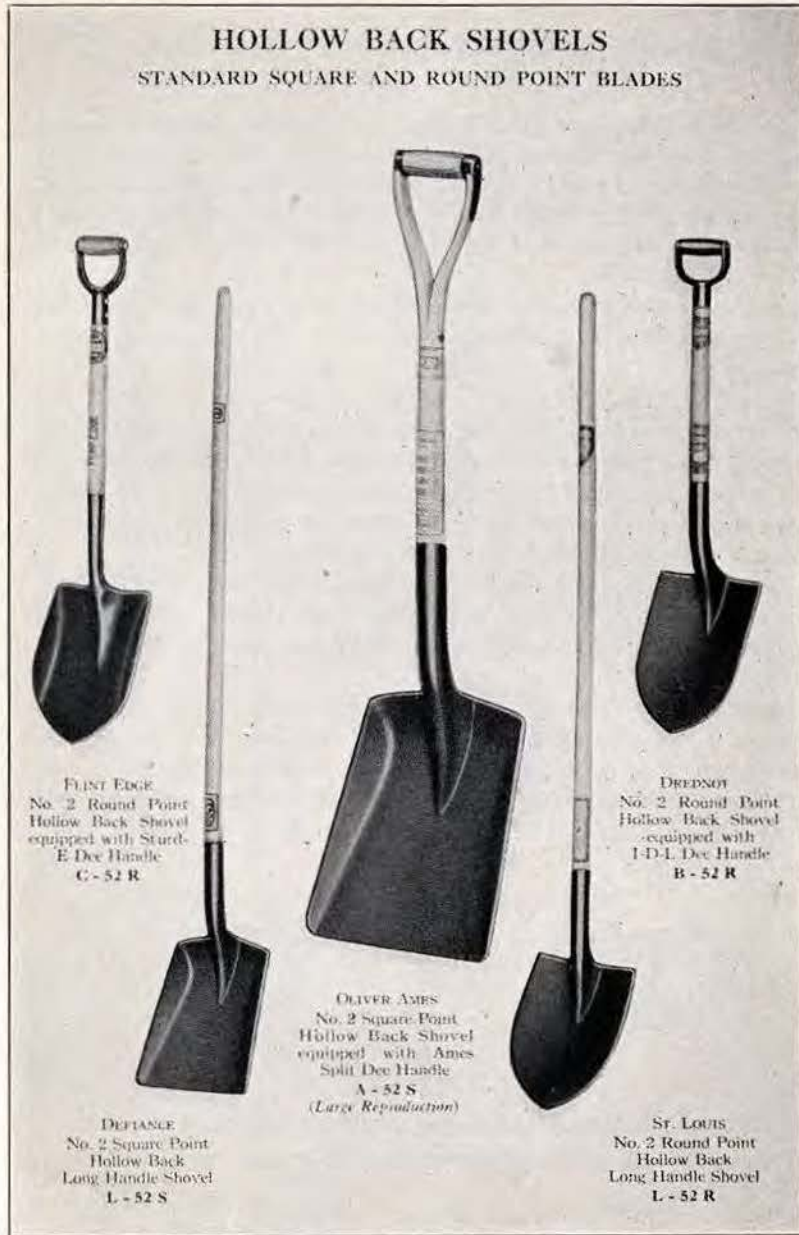
For Method of Ordering by List Numbers and Handle Symbols, see page 74.

For Method of Measuring Blade Dimensions and Lifts, see pages 72 and 73.

**BLACK SHOVELS COST LESS AND WEAR LONGER**

**HOLLOW BACK SHOVELS**

**STANDARD SQUARE AND ROUND POINT BLADES**



FLINT EDGE  
No. 2 Round Point  
Hollow Back Shovel  
equipped with Sturd-  
E Dee Handle  
C - 52 R

DREDNOT  
No. 2 Round Point  
Hollow Back Shovel  
equipped with  
I-D-L Dee Handle  
B - 52 R

OLIVER AMES  
No. 2 Square Point  
Hollow Back Shovel  
equipped with Ames  
Split Dee Handle  
A - 52 S  
(Large Reproduction)

DEFTANCE  
No. 2 Square Point  
Hollow Back  
Long Handle Shovel  
L - 52 S

St. LOUIS  
No. 2 Round Point  
Hollow Back  
Long Handle Shovel  
L - 52 R

See facing page for descriptions, sizes, grades, etc

**STEEL EDGE PLAIN BACK SHOVELS**  
STANDARD SQUARE AND ROUND POINT BLADES

The Steel Edge Plain Back Shovels are manufactured by a process of shovel-making originated during the infancy of the shovel industry. The blade is hammered from a bar of comparatively soft steel, during which process a piece of hard steel is inserted and so welded that a blade is produced having two outer layers of soft steel and an inner layer of hard or cutting steel.

During its use, the outer layers of soft steel wear faster than the inner layer of hard steel, thereby providing at all times a thin, sharp, cutting edge.

The Steel Edge Plain Back Shovels are particularly adapted for work in clay, loam or other soft soils, and are not recommended for use in handling hard materials, such as stone, gravel, concrete, etc

The manufacture of Steel Edge Shovels requires the most skillful workmanship—each tool is carefully inspected so that it will deliver that high measure of service for which it is noted.

Standard Square and Round Point Steel Edge Plain Back Shovels are manufactured in the OLIVER AMES, High (Porter) and Common (Adams) Grades, for descriptions of which see pages 6, 10 and 14, respectively.

The following sizes and types, equipped with AMES Split Dee Handles, I-D-L Dee Handles, Sturd-E Dee Handles, Wood Dee Handles and Regular 4½ foot Long Handles are regularly carried in stock. For descriptions and illustrations of handles, see pages 70 and 71.

Nominal Size	LIST NUMBERS	
	Square Point	Round Point
1	61 S	61 R
2	62 S	62 R
3	63 S	63 R
4	64 S	64 R
6	66 S	66 R

For Method of Ordering by List Number and Handle Symbols, see page 74.  
For Method of Measuring Blade Dimensions and Lifts, see pages 72 and 73.

**BLACK SHOVELS COST LESS AND WEAR LONGER**

**STEEL EDGE PLAIN BACK SHOVELS**  
STANDARD SQUARE AND ROUND POINT BLADES



See facing page for descriptions, sizes, grades, etc.

MOULDER SHOVELS

Moulder Shovels are manufactured in the Welded Plain Back and the Solid Shank types of construction and are furnished in size 2, equipped with AMES Split Dee Handles, I-D-L Dee Handles, Sturd-E Dee Handles, Wood Dee Handles and Malleable Peening Dee Handles. For descriptions and illustrations of handles, see pages 70 and 71.

Moulder Shovels are generally furnished with blades fully polished, front and back, enabling the user to cut and handle the sand with greatest ease. Moulder Shovels are designed to give the proper lift and balance so necessary in this class of tool.

The Welded Plain Back Moulder Shovels are manufactured by the same process as used in the construction of Standard Square and Round Point Welded Plain Back Shovels, for description of which see page 16. Moulder Shovels of this type of construction are manufactured in five grades, viz., the OLIVER AMES, Extra, High, Intermediate and Common Grades, for descriptions of which see pages 6, 8, 10, 12 and 14, respectively.

Nominal Size	List Number
2	72

The Solid Shank Moulder Shovels are manufactured in the Solid Socket and Split Socket types, by the same process as used in the construction of Standard Square and Round Point Solid Shank Shovels, for description of which see page 18.

The Solid or Closed Socket type is manufactured in three grades, viz., the OLIVER AMES, Extra and High Grades, for descriptions of which see pages 6, 8 and 10, respectively.

The Split Socket or Open Back type is manufactured in two grades, viz., the Intermediate and Common Grades, for descriptions of which see pages 12 and 14, respectively.

Nominal Size	List Number
2	82

For Method of Ordering by List Numbers and Handle Symbols, see page 74.  
For Method of Measuring Blade Dimensions and Lifts, see pages 72 and 73.

BLACK SHOVELS COST LESS AND WEAR LONGER

MOULDER SHOVELS



See facing page for descriptions, sizes, grades, etc.

**AUTOMOBILE, BOYS', LIME AND DITCHING SHOVELS**

**AUTOMOBILE SHOVELS**

Automobile Shovels are manufactured in the Solid Socket type of construction and under the OLIVER AMES, Extra and High Grades, for descriptions of which see pages 18, 6, 8 and 10, respectively.

Automobile Shovels are equipped with detachable Dee Handles, either Miniature Wood Dee or Pressed Steel Dee with wood grip, which, when detached, fit into a 16" tool box.

Shovels of this type are highly desirable on touring and camping trips and for removing snow and ice in winter driving, and prove their value in the first emergency.

Nominal Size	List Number
2	92

**BOYS' SHOVELS**

Boys' or Ladies' Shovels are manufactured in the Square Point Pattern in the Riveted Back type of construction, and in the Round Point Pattern in the Welded Plain Back type of construction, both of which are made under the OLIVER AMES and Extra Grades, for descriptions of which see pages 22, 16, 6 and 8, respectively.

Boys' Shovels are fitted with Miniature Wood Dee Handles, making convenient, light-weight tools for yard and garden use.

**LIST NUMBERS**

Nominal Size	Square Point	Round Point
2	102 S	102 R

**LIME SHOVELS**

Lime Shovels are manufactured in the Welded Plain Back type of construction and under the OLIVER AMES, Extra and Common Grades, for descriptions of which see pages 16, 6, 8 and 14, respectively.

Lime Shovels are fitted with Regular 4½ foot Long Handles and are specially designed for use in the handling of this material.

Nominal Size	List Number
2	122

**ROUND POINT DITCHING OR SPADING SHOVELS**

Round Point Ditching or Spading Shovels are manufactured in the Welded Plain Back type of construction and under the Common Grade, for descriptions of which see pages 16 and 14, respectively.

Shovels of this type are equipped with Regular 4½ foot Long Handles and make desirable tools for general farm and ditch work.

Nominal Size	List Numbers
1	111
2	112

For Method of Ordering by List Numbers and Handle Symbols, see page 74.  
For Method of Measuring Blade Dimensions and Lifts, see pages 72 and 73.

**BLACK SPADES COST LESS AND WEAR LONGER**

**AUTOMOBILE, BOYS', LIME, AND DITCHING OR SPADING SHOVELS**



BLACK DIAMOND  
Solid Socket  
Automobile Shovel  
equipped with detachable  
Pressed Steel Dee Handle  
G - 92



ST. LOUIS  
Square Point  
Riveted Back Boys'  
or Ladies' Shovel  
equipped with Miniature  
Wood Dee Handle  
F - 102 S



OLIVER AMES  
Round Point  
Plain Back Boys'  
or Ladies' Shovel  
equipped with Miniature  
Wood Dee Handle  
P - 102 R



PEERLESS  
No. 2 Round Point  
Welded Plain Back  
Long Handle  
Ditching or Spading  
Shovel  
L - 112



DREDNOT  
Welded Plain  
Back Long Handle  
Lime Shovel  
L - 122

See facing page for descriptions, sizes, grades, etc.



**MINING SHOVELS, BRICK OR SEWER SHOVELS  
AND CONCRETE SHOVELS**

**MINING SHOVELS**

Mining Shovels are manufactured in the Welded Plain Back and Riveted Back types of construction, in the Stiff Point, Half Spring Point and Full Spring Point Patterns and under the OLIVER AMES, Extra, High and Intermediate Grades. For the description of the Welded Plain Back type of construction, see page 16, and for the description of the Riveted Back type of construction, see page 22. Descriptions of the grades can be found on pages 6, 8, 10 and 12, respectively.

Mining Shovels of the types and patterns noted above, equipped with Regular 4½ foot Long Handles are regularly carried in stock. Various types of Dee Handles can be furnished on order, for descriptions and illustrations of which see pages 70 and 71.

With the number of grades, different types of construction and various patterns, a wide selection of Mining Shovels is offered for use in various kinds of soil and rock.

LIST NUMBERS	WELDED PLAIN BACK TYPE		
	Nominal Size	Stiff Point	Half Spring Point
	2	132	142
			Full Spring Point
			152
RIVETED BACK TYPE			
	2	162	172
			182

**BRICK OR SEWER SHOVELS**

Brick or Sewer Shovels are manufactured in size 2 in the Welded Plain Back, Steel Edge Plain Back and Solid Shank types of construction—see pages 16, 26 and 18, respectively. The Welded Plain Back type is manufactured in the OLIVER AMES, Extra, High, Intermediate and Common Grades; the Steel Edge Plain Back type is manufactured in the OLIVER AMES Grade; and the Solid Shank type is manufactured in the Extra, High and Intermediate Grades, for descriptions of which see pages 6, 8, 10, 12 and 14, respectively.

Brick or Sewer Shovels are built of extra strength, for use in brick yards and in sewer and tunnel construction, and regularly fitted with Dee Handles, for descriptions and illustrations of which see pages 70 and 71.

Nominal Size	WELDED PLAIN BACK	STEEL EDGE PLAIN BACK	SOLID SHANK
	List Number	List Number	List Number
2	192	202	202 B

**CONCRETE SHOVELS**

Concrete Shovels are manufactured in the One Piece Plain Back type of construction, under the High Grade; and in the Hollow Back type of construction, under the Extra and High Grades, for descriptions of which see pages 20, 10, 24 and 8, respectively.

Concrete Shovels are stoutly constructed and especially designed for this class of work and are regularly fitted with Dee Handles, for descriptions and illustrations of which see pages 70 and 71.

ONE PIECE PLAIN BACK TYPE		HOLLOW BACK TYPE	
Nominal Size	List Number	Nominal Size	List Number
2	212	2	212 C
		3	213 C
		4	214 C
		6	216 C

For Method of Ordering by List Numbers and Handle Symbols, see page 74.  
For Method of Measuring Blade Dimensions and Lifts, see pages 72 and 73.

**BLACK SHOVELS COST LESS AND WEAR LONGER**

**MINING, BRICK OR SEWER AND CONCRETE SHOVELS**



FLINT EDGE  
Welded Plain Back  
Brick or Sewer Shovel  
equipped with  
I-D-L Dee Handle  
B - 192

MYERS  
One Piece Plain Back  
Concrete Shovel  
equipped with Sturd-E  
Dee Handle  
C - 212

OLIVER AMES  
Steel Edge Plain Back  
Brick or Sewer Shovel  
equipped with Ames  
Split Dee Handle  
A - 202  
(Large Reproduction)

DREDNOT  
Welded Plain Back  
Half Spring Point  
Long Handle  
Mining Shovel  
L - 142

ST. LOUIS  
Riveted Back  
Full Spring Point  
Long Handle  
Mining Shovel  
L - 182

See facing page for descriptions, sizes, grades, etc.

**IRRIGATING SHOVELS AND CUT POINT PERFORATED RICE SHOVELS**

**IRRIGATING SHOVELS**

Irrigating Shovels are manufactured in the Welded Plain Back and Solid Shank types of construction, for descriptions of which see pages 16 and 18, respectively.

Irrigating Shovels are furnished plain or on special order with patent or turned steps and are equipped with Regular 4½ foot Long Handles. The Welded Plain Back Irrigating Shovels are manufactured in five grades, viz., OLIVER AMES, Extra, High, Intermediate and Common Grades, for descriptions of which see pages 6, 8, 10, 12 and 14, respectively.

Solid Shank Irrigating Shovels are furnished in the Solid or Closed Socket type and the Split or Open Back type.

The Solid Socket type is manufactured in four grades, viz., the OLIVER AMES, Extra, High and Intermediate Grades, and the Split Socket type in two grades, viz., the Intermediate and Common Grades, for descriptions of which see pages 6, 8, 10, 12 and 14, respectively.

Nominal Size	WELDED PLAIN BACK TYPE		SOLID SHANK TYPE
	List Number	List Number	List Number
1	—	—	231
2	222	—	232

**IRRIGATING OR RICE SHOVELS  
CUT POINT AND PERFORATED**

Cut Point Perforated Irrigating or Rice Shovels are manufactured in the Solid Shank type of construction, in both the Solid Socket type and the Split Socket type.

The Solid Socket type is furnished in three grades, viz., the OLIVER AMES, Extra and High Grades, and the Split Socket type is furnished in two grades, viz., the Intermediate and Common Grades, for descriptions of which see pages 6, 8, 10, 12 and 14, respectively.

Cut Point Irrigating or Rice Shovels are fitted with Regular 4½ foot Long Handles and are in popular demand in the rice fields.

Nominal Size	List Number
2	242

For Method of Ordering by List Numbers and Handle Symbols, see page 74.  
For Method of Measuring Blade Dimensions and Lifts, see pages 72 and 73

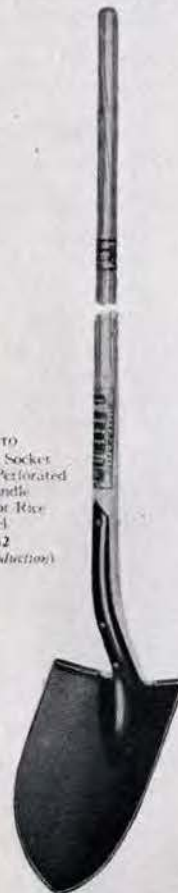
**BLACK SHOVELS COST LESS AND WEAR LONGER**

**IRRIGATING SHOVELS AND RICE SHOVELS**

OLIVER AMES  
No. 2 Welded Plain Back  
Long Handle Irrigating  
Shovel with Turned  
Steps  
L - 222  
(Large Reproduction)



WRIGHT  
No. 2 Solid Socket  
Cut Point—Perforated  
Long Handle  
Irrigating or Rice  
Shovel  
L - 242  
(Large Reproduction)



BLACK DIAMOND  
No. 2 Solid Socket  
Long Handle  
Irrigating Shovel  
L - 232  
(Large Reproduction)



See facing page for descriptions, sizes, grades etc

**RAILROAD OR TRACK SHOVELS**

Railroad or Track Shovels are manufactured in the Welded Plain Back, Solid Shank and Riveted Back types of construction, for descriptions of which see pages 16, 18 and 22, respectively.

Track Shovels are manufactured in several different popular shapes and are designed and constructed to permit tamping and handling of ties and ballast with the greatest efficiency.

Special care is given to the production of these tools—the shape of the blades and the lift and balance are the results of years of experience.

Railroad or Track Shovels of the types noted above are furnished with AMES Split Dee Handles, I-D-L Dee Handles, Sturd-E Dee Handles and Malleable Tamping Dee Handles, for illustrations and descriptions of which see pages 70 and 71.

**WELDED PLAIN BACK TYPE**

Welded Plain Back Track Shovels are manufactured in four grades, viz., the OLIVER AMES, Extra, High and Intermediate Grades, for descriptions of which see pages 6, 8, 10 and 12, respectively. The method of construction is the same as described on page 16 for Standard Square Point Welded Plain Back Shovels except as to shape, lift, etc.

Nominal Size	List Number
2	252

**SOLID SHANK TYPE**

Solid Shank Track Shovels are manufactured in the Solid or Closed Socket type and the Split Socket or Open Back type—see page 18.

The Solid Socket Type is made in the Plain and Two Strap Patterns, and in the OLIVER AMES, Extra and High Grades, for descriptions of which see pages 6, 8 and 10, respectively.

Where the greatest strength is desired, the Two Strap Solid Socket Track Shovel is highly recommended. The extra length straps extending above the top of the socket provide added strength to the handle and yet allow the strain, due to prying, to be distributed over a greater surface, all to the elimination of handle breakage. An added feature of the Solid Socket type is the ease with which handles can be replaced—a very important advantage in track work.

The Split Socket type is made in the Intermediate Grade, for description of which see page 12.

	<b>LIST NUMBERS</b>	
Nominal Size	Reg. Sockets	Two Strap Socket
2	262	272

**RIVETED BACK TYPE**

Riveted Back Track Shovels are manufactured in the Sunken Back type and in the OLIVER AMES, Extra, High and Intermediate Grades, for descriptions of which see pages 6, 8, 10 and 12, respectively.

Nominal Size	List Number
2	282

For Method of Ordering by List Numbers and Handle Symbols, see page 74.  
For Method of Measuring Blade Dimensions and Lifts, see pages 72 and 73

**BLACK SHOVELS COST LESS AND WEAR LONGER**

**RAILROAD OR TRACK SHOVELS**



DEFTANCE  
Riveted Back Sunken  
Back Track Shovel  
equipped with Ames  
Split Dee Handle  
A - 282

BLACK DIAMOND  
Solid Socket  
Track Shovel  
equipped with  
I-D-L Dee Handle  
B - 262

OLIVER AMES  
Welded Plain Back  
Track Shovel equipped  
with Malleable Tamp-  
ing Dee Handle  
H - 252  
(Large Reproduction)

FLINT EDGE  
Riveted Back  
Sunken Back  
Track Shovel  
equipped with  
Wood Dee  
Handle  
D - 282

WICORRO  
Two Strap type  
Solid Socket  
Track Shovel  
equipped with Sturd-E  
Dee Handle  
C-272

See facing page for descriptions, sizes, grades, etc.

**ORE SHOVELS AND BAKER SHOVELS**

**ORE SHOVELS**

Square Point Ore Shovels are manufactured in the Hollow Back type of construction (see page 24 for description), in the sizes listed below and in five grades, viz., OLIVER AMES, Extra, High, Intermediate and Common Grades, all as described on pages 6, 8, 10, 12 and 14, respectively.

Ore Shovels are furnished in the Plain, Corrugated and Tricor patterns and are equipped with AMES Split Dee Handles, I-D-L Dee Handles, Sturd-E Dee Handles and Wood Dee Handles, as described and illustrated on pages 70 and 71.

Special attention is given to the design, construction, lift and balance of Ore Shovels to assure maximum efficiency in their use.

**LIST NUMBERS**

Nominal Size	Plain	Corrugated	Tricor
2	292	302	312
3	293	303	313
4	294	304	314
6	296	306	316

**BAKER SHOVELS**

Baker Shovels are manufactured in the Riveted Back type of construction (see page 24 for description), in sizes 4 and 5 and in the Common Grade only, for description of which see page 14.

Baker Shovels are supplied with 9' front and back straps and are equipped with 7 foot, 8 foot, 9 foot or 10 foot Long Handles.

Nominal Size	List Number
4	324
5	325

For Method of Ordering by List Numbers and Handle Symbols, see page 74.  
For Method of Measuring Blade Dimensions and Lifts, see pages 72 and 73.

**BLACK SHOVELS COST LESS AND WEAR LONGER**

**ORE SHOVELS AND BAKER SHOVELS**



ST. LOUIS  
No. 2 Hollow Back  
Ore Shovel equipped  
with I-D-L Dee Handle  
B - 292

DREDNOT  
No. 2 Hollow Back  
Tricor Pattern Ore  
Shovel equipped with  
Sturd-E Dee Handle  
C - 312

OLIVER AMES  
No. 2 Hollow Back  
Corrugated Pattern  
Ore Shovel equipped  
with Ames Split Dee  
Handle  
A - 302

GOLD RIBBON  
No. 4 Riveted Back  
Baker Shovel  
equipped with 9' Straps  
and 7 ft. Long Handle  
7 S - 324

MASSACHUSETTS  
No. 4 Riveted Back  
Baker Shovel  
equipped with 9' Straps  
and 7 ft. Long Handle  
7 S - 324

See facing page for descriptions, sizes, grades, etc.

**SNOW SHOVELS**

**RIVETED BACK PATTERN (OLD STYLE)**

Riveted Back Snow Shovels are manufactured in the OLIVER AMES Grade only and in the Long Handle and Dee Handle types, and are the finest snow shovels produced.

The Riveted Back Snow Shovel is more than a Snow Shovel, being used largely as a general purpose or barn shovel.

The Long Handles have flat sides, a feature which prevents slipping and turning when in use.

The Dee Handles are extra long and are fitted with an attractive and serviceable pressed steel head with wood grip.

Nominal Size	LIST NUMBERS	
	Long Handle	Dee Handle
2	M-332	G-332

**HOLLOW BACK PATTERN**

The Hollow Back Snow or Barn Shovels are manufactured in the OLIVER AMES and Common Grades.

This type of snow shovel is manufactured in the same manner as Standard Square Point Hollow Back Shovels, as described on page 24, and should not be classified with the light, common type snow shovels sold for temporary use.

The Long Handles are of regular length and the Dee Handles of extra length, equipped with pressed steel heads with wood grips.

Nominal Size	LIST NUMBERS	
	Long Handle	Dee Handle
2	L-342	G-342

For Method of Ordering by List Numbers and Handle Symbols, see page 74.  
For Method of Measuring Blade Dimensions and Lifts, see pages 72 and 73.

**BLACK SHOVELS COST LESS AND WEAR LONGER**

**SNOW SHOVELS**



**GOLD RIBBON**  
Hollow Back Snow Shovel equipped with Pressed Steel Dee Handle  
**G - 342**

**PEARLESS**  
Hollow Back Snow Shovel equipped with Pressed Steel Dee Handle  
**G - 342**

**OLIVER AMES**  
Riveted Back (Old Style) Snow Shovel equipped with Pressed Steel Dee Handle  
**G - 332**  
*(Large Reproductions)*

**OLIVER AMES**  
Riveted Back (Old Style) Snow Shovel equipped with Flat Sided Long Handle  
**M - 332**  
*(Large Reproductions)*

**FALLS CITY**  
Hollow Back Long Handle Snow Shovel  
**L - 342**

See facing page for descriptions, sizes, grades, etc.

LIGHT WEIGHT SQUARE AND ROUND POINT SHOVELS AND SOD PIT SHOVELS

LIGHT WEIGHT SQUARE AND ROUND POINT SHOVELS

For those who require light weight shovels, weighing approximately 50 lbs. per dozen, special patterns have been constructed having light gauge steel blades, so shaped and treated to give excellent service.

Light Weight Shovels are manufactured in the Welded Plain Back (with narrow straps) and the Solid Shank types of construction and are made in the same manner as the processes described on pages 16 and 18 respectively. Shovels of this type are manufactured in the Square and Round Point Patterns and in the High, Intermediate and Common Grades, all as described on pages 10, 12 and 14, respectively.

The following sizes and types, equipped with AMES Split Dee Handles, I-D-L Dee Handles, Sturd-E Dee Handles, Wood Dee Handles and Knob End or Manure Fork Long Handles are regularly carried in stock. See pages 70 and 71.

LIST NUMBERS		
WELDED PLAIN BACK TYPE		
Nominal Size	Square Point	Round Point
1	351 S	351 R
2	352 S	352 R
SOLID SHANK TYPE		
1	361 S	361 R
2	362 S	362 R

SOD PIT SHOVELS

Sod Pit Shovels are manufactured in the Welded Plain Back type of construction (see page 16), in the sizes listed below and in the OLIVER AMES, Extra and High Grades—see pages 6, 8 and 10, respectively.

Sod Pit Shovels are furnished with various types of Dee and Long Handles (see pages 70 and 71) and make very convenient tools for this class of work.

Nominal Size	List Number
2	372
3	373
4	374

For Method of Ordering by List Numbers and Handle Symbols, see page 74.  
For Method of Measuring Blade Dimensions and Lifts, see pages 72 and 73.

BLACK SHOVELS COST LESS AND WEAR LONGER

LIGHT WEIGHT SQUARE AND ROUND POINT SHOVELS AND SOD PIT SHOVELS



GRIFFITH'S  
No. 2 Plain Back  
Sod Pit Shovel  
equipped with  
I-D-L Dee Handle  
B - 372

BLACK DIAMOND  
No. 2 Solid Socket  
Round Point Light  
Weight Shovel  
equipped with Sturd-E  
Dee Handle  
C - 362 R

WRIGHTO  
No. 2 Solid Socket  
Square Point Light  
Weight Shovel  
equipped with Ames  
Split Dee Handle  
A - 362 S  
*Large Reproduction*

HELMET  
No. 2 Plain Back  
Light Weight  
Knob End  
Long Handle  
Round Point  
Shovel  
N - 352 R

PEERLESS  
No. 2 Solid Shank  
Light Weight  
Knob End  
Long Handle  
Round Point  
Shovel  
N - 362 R

See facing page for descriptions, sizes, grades, etc.

TELEGRAPH SPOONS AND SHOVELS

TELEGRAPH SPOONS

Telegraph Spoons are manufactured in the Welded Plain Back type of construction (see page 16), in the Eastern Pattern and Western Union Pattern types, in size 2 and in the OLIVER AMES, Extra and High Grades, as described on pages 6, 8 and 10, respectively.

Telegraph Spoons are furnished with front and back straps, 9", 18" and 24" long, and with special spoon handles, 7 ft., 8 ft., 9 ft. and 10 ft. in length.

LIST NUMBERS  
EASTERN PATTERN

Handle Length	9" Straps	18" Straps	24" Straps
7 ft.	7 T-382	7 T-392	7 T-402
8 ft.	8 T-382	8 T-392	8 T-402
9 ft.	9 T-382	9 T-392	9 T-402
10 ft.	10 T-382	10 T-392	10 T-402

WESTERN UNION PATTERN

7 ft.	7 T-412	7 T-422	7 T-432
8 ft.	8 T-412	8 T-422	8 T-432
9 ft.	9 T-412	9 T-422	9 T-432
10 ft.	10 T-412	10 T-422	10 T-432

TELEGRAPH SHOVELS

Telegraph Shovels are manufactured in the Welded Plain Back type of construction (see page 16), in size 2 and in the OLIVER AMES, Extra and High Grades, all as described on pages 6, 8 and 10, respectively. Telegraph Shovels are furnished with front and back straps, 9", 18" and 24" long, and with handles, 7 ft., 8 ft., 9 ft. and 10 ft. in length. When so ordered and at special prices, Telegraph Shovels can be furnished with straight spoon handles of lengths noted above and without bend or lift.

LIST NUMBERS

Handle Length	9" Straps	18" Straps	24" Straps
7 ft.	7 S-442	7 S-452	7 S-462
8 ft.	8 S-442	8 S-452	8 S-462
9 ft.	9 S-442	9 S-452	9 S-462
10 ft.	10 S-442	10 S-452	10 S-462

For Method of Ordering by List Numbers and Handle Symbols, see page 74.  
For Method of Measuring Blade Dimensions and Lifts, see pages 72 and 73.

BLACK SHOVELS COST LESS AND WEAR LONGER

TELEGRAPH SPOONS AND SHOVELS

OLIVER AMES  
Welded Plain Back  
Eastern Pattern Tele-  
graph Spoon with 8 ft.  
Long Handle and  
24" Straps  
8 T-402



DREDNOT  
Welded Plain Back  
Western Union Pat-  
tern Telegraph Spoon  
with 8 ft. Long Han-  
dle and 18" Straps  
8 T-422

FLINT-EDGE  
Welded Plain Back  
Telegraph Shovel  
with 8 ft. Bent Long  
Handle and 9" Straps  
8 S-442

See facing page for descriptions, sizes, grades, etc.

COAL SHOVELS

Coal Shovels are manufactured in the Hollow Back type of construction with the same process as used in the construction of Standard Square and Round Point Hollow Back Shovels as described on page 24.

Hollow Back Coal Shovels are furnished in sizes 1, 2 and 3, and in five grades, viz., the OLIVER AMES, Extra, High, Intermediate and Common Grades, all as described on pages 6, 8, 10, 12 and 14, respectively

Coal Shovels are manufactured in the plain, corrugated and Tricor (patented) patterns and in the Regular Socket or Small, Light Weight Socket types. The Corrugated and Tricor patterns are particularly in demand and the Small Socket Light Weight pattern is popular in some sections.

In designing the Coal Shovel patterns, special attention was given to the shape of the blade, the efficient arrangement of the corrugations, the size and shape of the socket, the hang or balance — and particularly to the weight of the finished product — all for the delivery of shovels most desired by the Coal Miners.

The following sizes and types equipped with AMES Split Dee Handles, Sturd-E Dee Handles, I-D-L Dee Handles, Wood Dee Handles and Regular 4½ foot Long Handles are regularly carried in stock.

For descriptions and illustrations of handles, see pages 70 and 71.

LIST NUMBERS

Nominal Size	REGULAR SOCKET			SMALL SOCKET		
	Plain	Corrugated	Tricor	Plain	Corrugated	Tricor
1	471	481	491	501	511	521
2	472	482	492	502	512	522
3	473	483	493	503	513	523
4	474	484	494	504	514	524

For Method of Ordering by List Numbers and Handle Symbols, see page 74.

For Method of Measuring Blade Dimensions and Lifts, see pages 73 and 74.

BLACK SHOVELS COST LESS AND WEAR LONGER

COAL SHOVELS



See facing page for descriptions, sizes, grades, etc.



STANDARD PATTERN SPADES (GARDEN)

Standard Pattern or Garden Spades are manufactured in size 2 and in the following types of construction, all as described under Standard Square and Round Point Shovels on the pages noted after each type:

- Welded Plain Back ..... See page 16
- Steel Edge Plain Back ..... See page 26
- Solid Shank ..... See page 18
- One Piece Plain Back ..... See page 20

All Standard Pattern Spades of the types listed above are equipped with patented steps securely fastened to the blades and are furnished with AMES Split Dee Handles, I-D-L Dee Handles, Sturd-E Dee Handles, Wood Dee Handles and Regular 4½ foot Long Handles, for descriptions and illustrations of which see pages 70 and 71.

The Welded Plain Back type is manufactured in the OLIVER AMES, Extra, High, Intermediate and Common Grades, all as described on pages 6, 8, 10, 12 and 14, respectively.

The Steel Edge Plain Back Spades are furnished in the OLIVER AMES, High and Common Grades, for descriptions of which see pages 6, 8 and 14, respectively. The Steel Edge type of construction is particularly adapted to spades, permitting a sharp cutting edge at all times.

The Solid Shank Spades are made in both the Solid or Closed Socket and the Split or Open Back Socket types — the Solid Socket type being furnished in the OLIVER AMES, Extra and High Grades, and the Split Socket type in the Intermediate and Common Grades, for descriptions of which see pages 6, 8, 10, 12 and 14, respectively.

The One Piece Plain Back Spades are manufactured in the High, Intermediate and Common Grades—see pages 10, 12 and 14, respectively

Nominal Size	Type	List Numbers
2	Welded Plain Back	602
2	Steel Edge Plain Back	632
2	Solid Shank	612
2	One Piece Plain Back	622

For Method of Ordering by List Numbers and Handle Symbols, see page 74.  
 For Method of Measuring Blade Dimensions and Lifts, see pages 72 and 73.

BLACK SPADES COST LESS AND WEAR LONGER

STANDARD PATTERN SPADES (GARDEN)



BLACK DIAMOND  
 No. 2 Solid Socket  
 Solid Shank Spade  
 equipped with Wood  
 Dee Handle  
 D - 612

DREDDNOT  
 No. 2 Plain Back  
 Spade equipped  
 with I-D-L Dee Handle  
 B - 602

OLIVER AMES  
 No. 2 Steel Edge  
 Plain Back Spade  
 equipped with Ames  
 Split Dee Handle  
 A - 632  
 (Large Reproduction)

MVERS  
 No. 2 One Piece  
 Plain Back Long  
 Handle Spade  
 L - 622

FLINT EDGE  
 No. 2 Plain Back  
 Long Handle  
 Spade  
 L - 602

See facing page for descriptions, sizes, grades, etc.

**DRAINAGE TOOLS**

**DITCH, DRAIN AND POST OR CONCAVE SPADES**

Ditch Spades, Drain Spades and Post or Concave Spades are manufactured in the Welded Plain Back and Solid Shank types of construction by the same processes as described under Standard Square and Round Point Shovels on pages 16 and 18, respectively.

Welded Plain Back Ditch Spades, Drain Spades and Post Spades are furnished in the OLIVER AMES, Extra, High and Intermediate Grades, for descriptions of which see pages 6, 8, 10 and 12, respectively.

Solid Shank Ditch Spades, Drain Spades and Post Spades are manufactured in the Solid or Closed Socket type and the Split or Open Back Socket type—the Solid Socket type being furnished in the OLIVER AMES, Extra and High Grades and the Split Socket type in the Intermediate Grade, all as described on pages 6, 8, 10 and 12, respectively.

The following sizes (blade lengths) and types equipped with AMES Split Dee Handles, I-D-L Dee Handles, Sturd-E Dee Handles and Wood Dee Handles are regularly carried in stock. For descriptions and illustrations of handles, see pages 70 and 71.

LIST NUMBERS			
WELDED PLAIN BACK TYPE			
Nominal Size (Length)	Ditch Spades	Drain Spades	Post Spades
14"	644	654	664
16"	646	656	666
18"	648	658	668
20"	640	650	660
SOLID SHANK TYPE			
14"	674	684	694
16"	676	686	696
18"	678	688	698

For Method of Ordering by List Numbers and Handle Symbols, see page 74.  
 For Method of Measuring Blade Dimensions and Lifts, see pages 72 and 73.

**BLACK SPADES COST LESS AND WEAR LONGER**

**DRAINAGE TOOLS**  
**DITCH, DRAIN AND POST OR CONCAVE SPADES**



FLINT EDGE  
 14" Plain Back  
 Post or Concave  
 Spade equipped with  
 I-D-L Dee Handle  
 B - 664

DIODESOR  
 16" Plain Back  
 Drain Spade  
 equipped with  
 Sturd-E Dee  
 Handle  
 C - 656

BLACK DIAMOND  
 16" Solid Socket  
 Drain Spade  
 equipped with Wood  
 Dee Handle  
 D - 686

OLIVER AMES  
 16" Welded Plain Back  
 Ditch Spade equipped  
 with Ames Split  
 Dee Handle  
 A - 646  
 (Large Reproduction)

DEFTANCE  
 16" Solid Socket  
 Ditch Spade  
 equipped with Ames  
 Split Dee Handle  
 A - 676

See facing page for descriptions, sizes, grades, etc.

**BOYS' SPADES, CONCRETE SPADES, DIAMOND POINT OR WATERLAND SPADES AND IOWA PATTERN SPADES**

**BOYS' SPADES**

Boys' or Ladies' Spades are manufactured in the Riveted Back type of construction (see page 22), in size 2 and in the OLIVER AMES and Extra Grades.

Boys' Spades are fitted with Miniature Wood Dee Handles and make excellent tools for light garden work.

Nominal Size	List Number
2	702

**CONCRETE SPADES**

Perforated Concrete Spades are manufactured in the Welded Plain Back type of construction (see page 16), in sizes 2 and 4 and in the OLIVER AMES, Extra and High Grades, for descriptions of which see pages 6, 8 and 10, respectively.

Concrete Spades are furnished with AMES Split Dee Handles, I-D-L Dee Handles, Sturd-E Dee Handles, Wood Dee Handles and Regular 4½ foot Long Handles, for descriptions and illustrations of which, see pages 70 and 71.

Nominal Size	List Numbers
2	712
4	714

**DIAMOND POINT OR WATERLAND SPADES**

Diamond Point or Waterland Spades are manufactured in the Welded Plain Back and Solid Shank types of construction (see pages 16 and 18), in size 2 and in the OLIVER AMES, Extra, High and Intermediate Grades (see pages 6, 8, 10 and 12, respectively)

Nominal Size	LIST NUMBERS	
	WELDED PLAIN BACK TYPE	SOLID SHANK TYPE
2	722	722 V

**IOWA PATTERN SPADES**

Iowa Pattern Spades are manufactured in the Welded Plain Back and Solid Shank types of construction, for descriptions of which see pages 16 and 18, respectively.

Iowa Pattern Spades, in both types of construction, are furnished in the OLIVER AMES, Extra, High and Intermediate Grades—see pages 6, 8, 10 and 12.

Iowa Pattern Spades are fitted with extra length AMES Split Dee Handles, I-D-L Dee Handles, Sturd-E Dee Handles and Regular Wood Dee Handles—see pages 70 and 71.

Nominal Size	LIST NUMBERS	
	WELDED PLAIN BACK TYPE	SOLID SOCKET TYPE
2	732	742

For Method of Ordering by List Numbers and Handle Symbols, see page 74  
For Method of Measuring Blade Dimensions and Lifts, see pages 72 and 73.

**BLACK SPADES COST LESS AND WEAR LONGER**

**BOYS', CONCRETE, DIAMOND POINT OR WATERLAND AND IOWA PATTERN SPADES**



DEFIANCE  
Welded Plain Back  
Iowa Pattern Spade  
equipped with Wood  
Dee Handle  
D - 732

OLIVER AMES  
Riveted Back Boys' or  
Ladies' Spade equipped  
with Miniature Wood  
Dee Handle  
F - 702

FLINT EDGE  
No. 2 Plain Back  
Perforated Concrete  
Spade equipped with  
Sturd-E Dee Handle  
C - 712

WRIGHTO  
Solid Socket  
Iowa Pattern Spade  
equipped with Ames  
Split Dee Handle  
A - 742

WATERLAND  
Welded Plain Back  
Diamond Point or  
Waterland Spade  
equipped with Wood  
Dee Handle  
D - 722

See facing page for descriptions, sizes, grades, etc.

GRAFTING SPADES AND NURSERY SPADES

GRAFTING SPADES

Grafting Spades are manufactured in the Welded Plain Back and Solid Shank types of construction under the processes as described on pages 16 and 18, respectively, for Standard Square and Round Point Shovels.

Grafting Spades are furnished in size 3 in the Narrow Point and Wide Point patterns. The Welded Plain Back type is manufactured under the OLIVER AMES, Extra, High and Intermediate Grades, for descriptions of which see pages 6, 8, 10 and 12, respectively. The Solid Shank type is manufactured in both the Solid Socket or Closed type and the Split Socket or Open type; the Solid Socket type being manufactured in the OLIVER AMES, Extra and High Grades, and the Split Socket type being manufactured in the Intermediate and Common Grades, for descriptions of which see pages 6, 8, 10, 12 and 14, respectively.

Grafting Spades are fitted with AMES Split Dee Handles, I-D-L Dee Handles, Sturd-E Dee Handles and Regular Wood Dee Handles, for descriptions and illustrations of which see pages 70 and 71.

LIST NUMBERS  
WELDED PLAIN BACK TYPE

Nominal Size	Narrow Point	Wide Point
3	753	763

SOLID SHANK TYPE

3	773	783
---	-----	-----

NURSERY SPADES

Nursery Spades are manufactured in the Steel Edge Plain Back and Welded Plain Back types of construction, as described under Standard Square and Round Point Shovels, on pages 26 and 16, respectively. The Steel Edge Plain Back type is particularly adapted to the construction of Nursery Spades, as a sharper cutting edge is provided at all times. The Welded Plain Back type of construction is lighter in weight than the Steel Edge Plain Back type of construction, and is found to be a serviceable tool where extra heavy work is not required.

Nursery Spades are furnished in sizes 2 and 3; size 3 with tapered blade, when so ordered.

Nursery Spades are manufactured in the OLIVER AMES Grade only, as described on page 6.

Spades of this type are generally furnished with regular Wood Dee Handles to which is attached extra length front and back straps extending to the Dee of the handle. When so ordered, I-D-L Dee Handles and Sturd-E Dee Handles can be furnished.

Nominal Size	STEEL EDGE PLAIN BACK TYPE	WELDED PLAIN BACK TYPE
2	792	792 N
3	793	793 N

For Method of Ordering by List Numbers and Handle Symbols, see page 74.

For Method of Measuring Blade Dimensions and Lifts, see pages 72 and 73.

BLACK SPADES COST LESS AND WEAR LONGER

GRAFTING AND NURSERY SPADES



PORTER  
Plain Back  
Wide Point Grafting  
Spade equipped with  
I-D-L Dee Handle  
B - 763

DREDNOT  
Solid Socket  
Narrow Point  
Grafting Spade  
equipped with Ames  
Split Dee Handle  
A - 773

OLIVER AMES  
No. 3 Steel Edge  
Plain Back  
Tapered Nursery  
Spade equipped  
with Wood Dee  
Handle  
D - 793 - T

OLIVER AMES  
No. 2 Steel Edge Plain  
Back Nursery Spade  
equipped with Wood  
Dee Handle  
D - 792  
(Large Reproduction)

ST. LOUIS  
Plain Back  
Narrow Point  
Grafting Spade  
equipped with  
Sturd-E Dee Handle  
C - 753

See facing page for descriptions, sizes, grades, etc.

**EASTERN PATTERN SCOOPS**

Eastern Pattern Scoops are designed and constructed for general and universal use. The blades are formed of steel of an analysis and gauge to meet the requirements of the work to be performed and the grade under which they are sold.

Eastern Pattern Scoops are manufactured in the Hollow Back and Riveted Back types of construction, the same as described in the construction of Standard Square and Round Point Shovels on pages 24 and 22, respectively, and each type is furnished in the Regular, Jack and Round Point Patterns under the OLIVER AMES, Extra, High, Intermediate and Common Grades, for descriptions of which see pages 6, 8, 10, 12 and 14, respectively.

Eastern Pattern Riveted Back Regular Pattern Scoops in the OLIVER AMES, Extra and High Grades may be fitted with extra shoulder braces, thereby making sturdy tools of long life and especially desirable for coal yard work. For extra prices covering extra shoulder braces, refer to current price lists.

The following sizes and types, equipped with AMES Split Dee Handles, I-D-L Dee Handles, Sturd-E Dee Handles, Wood Dee Handles and Regular 4½ foot Long Handles are regularly carried in stock. For descriptions and illustrations of handles, see pages 70 and 71.

LIST NUMBERS				
HOLLOW BACK TYPE				
Nominal Size	Regular	Jack	Round Point	
2	802	812	822	
3	803	813	823	
4	804	814	824	
5	805	815	825	
6	806	816	826	
7	807	817	827	
RIVETED BACK TYPE				
Nominal Size	Regular	Jack	Round Point	
2	832	842	852	
3	833	843	853	
4	834	844	854	
5	835	845	855	
6	836	846	856	
7	837	847	857	

For Method of Ordering by List Numbers and Handle Symbols, see page 74.  
For Method of Measuring Blade Dimensions and Lifts, see pages 72 and 73.

**BLACK SCOOPS COST LESS AND WEAR LONGER**

**EASTERN PATTERN SCOOPS**



See facing page for descriptions, sizes, grades, etc.

WESTERN OR GRAIN PATTERN SCOOPS

Western or Grain Pattern Scoops are manufactured in the Hollow Back type of construction by the same process as is used in the construction of Standard Square and Round Point Hollow Back Shovels, as described on page 24.

Western Pattern Scoops are furnished in the Regular and Corrugated patterns and in the OLIVER AMES, Extra, High, Intermediate and Common Grades, as described on pages 6, 8, 10, 12 and 14, respectively.

Western Pattern Scoops are manufactured with the regular size socket and the small size socket.

The following sizes and types of Western or Grain Pattern Scoops, equipped with AMES Split Dee Handles, I-D-L Dee Handles, Sturd-E Dee Handles, Wood Dee Handles and Regular 4½ foot Long Handles are regularly carried in stock.

For descriptions and illustrations of handles, see pages 70 and 71.

Nominal Size	LIST NUMBERS		CORRUGATED PATTERN Small Socket
	REGULAR PATTERN Reg. Socket	REGULAR PATTERN Small Socket	
6	866	876	886
8	868	878	888
10	860	870	880
12	862	872	882

For Method of Ordering by List Numbers and Handle Symbols, see page 74  
 For Method of Measuring Blade Dimensions and Lifts, see pages 72 and 73.

BLACK SCOOPS COST LESS AND WEAR LONGER

WESTERN OR GRAIN PATTERN SCOOPS



DREDNOT  
 No. 6 Hollow Back  
 Regular Pattern  
 Western Pattern  
 Scoop equipped with  
 Wood Dee Handle  
 D - 866

ST. LOUIS  
 No. 6 Hollow Back  
 Corrugated Small  
 Socket Western Pat-  
 tern Scoop equipped  
 with I-D-L  
 Dee Handle  
 B - 886

THOR  
 No. 6 Hollow Back  
 Regular Pattern  
 Long Handle  
 Western Pattern  
 Scoop  
 L - 866

FLINT EDGE  
 No. 6 Hollow Back  
 Regular Pattern  
 Small Socket  
 Long Handle  
 Western Pattern  
 Scoop  
 L - 876

OLIVER AMES  
 No. 6 Hollow Back  
 Small Socket Corru-  
 gated Western Pattern  
 Scoop equipped with  
 Ames Split Dee Handle  
 A - 886  
 (Large Reproduction)

See facing page for descriptions, sizes, grades, etc.

**SAND OR GRAVEL SCOOPS, GRAIN TRIMMER SCOOPS AND CHARGING SCOOPS**

**SAND OR GRAVEL SCOOPS—ROUND MOUTH PATTERN**

Round Mouth Sand or Gravel Scoops are manufactured in the Hollow Back type of construction, as described on page 24, and in the OLIVER AMES, Extra, High, Intermediate and Common Grades, for descriptions of which see pages 6, 8, 10, 12 and 14, respectively.

Sand or Gravel Scoops are furnished with AMES Split Dee Handles, I-D-L Dee Handles, Sturd-E Dee Handles and Wood Dee Handles. For descriptions and illustrations of handles, see pages 70 and 71.

Nominal Size	List Number
2	892

**GRAIN TRIMMER SCOOPS**

Grain Trimmer Scoops are manufactured in the Riveted Back type of construction as described under Square and Round Point Shovels on page 22 and in the OLIVER AMES and High Grades—see pages 6 and 10, respectively.

Grain Trimmer Scoops are special tools, constructed of light gauge steel blades and fitted with AMES Split Dee Handles, I-D-L Dee Handles, Sturd-E Dee Handles and Wood Dee Handles. For descriptions and illustrations of handles, see pages 70 and 71.

Nominal Size	List Numbers
2	902
3	903

**CHARGING SCOOPS**

Charging Scoops are manufactured in the Hollow Back type of construction (see page 24), in the sizes listed below and in the OLIVER AMES, Extra and High Grades (see pages 6, 8 and 10, respectively).

Charging Scoops are furnished with various types of Dee Handles and Regular 4½ foot Long Handles, all of low lift. For descriptions and illustrations of handles, see pages 70 and 71.

Nominal Size	List Numbers
4	914
5	915

For Method of Ordering by List Numbers and Handle Symbols, see page 74.  
For Method of Measuring Blade Dimensions and Lifts, see pages 72 and 73.

**BLACK SCOOPS COST LESS AND WEAR LONGER**

**SAND OR GRAVEL, GRAIN TRIMMER AND CHARGING SCOOPS**



See facing page for descriptions, sizes, grades, etc.

FURNACE SCOOPS AND OYSTER SCOOPS

FURNACE SCOOPS

Furnace Scoops are manufactured in the Hollow Back and Riveted Back types by the same processes as described under Square and Round Point Shovels on pages 24 and 22, respectively.

Furnace Scoops are furnished in one size and under the Common Grade, as described on page 14.

Hollow Back and Riveted Back Furnace Scoops are equipped with low lift Dee and Long Handles—the Dee Handle being fitted with a pressed steel top with wood grip For descriptions and illustrations of handles, see pages 70 and 71.

Special attention has been given to the design of Furnace Scoops to produce efficient tools for household use.

Nominal Size	LIST NUMBERS	
	HOLLOW BACK TYPE	RIVETED BACK TYPE
2	922	932

OYSTER SCOOPS

Oyster Scoops are manufactured in the Hollow Back type of construction, the same as used in the manufacture of Hollow Back Square and Round Point Shovels, as described on page 24.

Oyster Scoops are furnished in sizes 3, 5 and 7 and in the Intermediate Grade, as described on page 12.

Scoops of this classification are similar in shape to Eastern Pattern Hollow Back Scoops, differing however in the gauge and analysis of the steel blades and by the flattening of the point.

Oyster Scoops are generally fitted with Wood Dee Handles and can be furnished galvanized when so ordered, for cost of which see price list.

Nominal Size	List Numbers
3	943
5	945
7	947

For Method of Ordering by List Numbers and Handle Symbols, see page 74.  
 For Method of Measuring Blade Dimensions and Lifts, see pages 72 and 73.

BLACK SCOOPS COST LESS AND WEAR LONGER

FURNACE SCOOPS AND OYSTER SCOOPS



HELMET  
 No. 5 Hollow Back  
 Oyster Scoop  
 equipped with  
 Wood Dee Handle  
 D - 945

PEERLESS  
 Hollow Back  
 Furnace Scoop  
 equipped with Pressed  
 Steel Dee Handle  
 G - 922

MASSACHUSETTS  
 Riveted Back Furnace  
 Scoop equipped with  
 Pressed Steel Dee  
 Handle  
 G - 932  
 (Large Reproduction)

FALLS CITY  
 Hollow Back  
 Long Handle  
 Furnace Scoop  
 L - 922

GRIFROW  
 Riveted Back  
 Long Handle  
 Furnace Scoop  
 L - 932

See facing page for descriptions, sizes, grades, etc.



**ALL STEEL HANDLE SCOOPS AND ASH PAN SCOOPS**

**ALL STEEL HANDLE SCOOPS (APOLLO)**

All Steel Handle Scoops are manufactured in the Hollow Back type of construction, as described on page 24, in the sizes listed below and in the OLIVER AMES, Extra and High Grades—see pages 6, 8 and 10

Steel Handle Scoops are pressed and shaped from single pieces of sheet steel, the blade and handle of the same piece, and are fitted with Malleable Dee Heads or Pressed Steel Dee Heads with Wood Grips.

Steel Handle Scoops are specially designed and constructed for use in handling hot materials, such as asphalt, slag, etc., in which work wood stem handles may be burnt and destroyed, and are also popular in coal yard work.

Nominal Size	List Numbers
3	953
4	954
5	955
6	956

**ASH PAN SCOOPS**

Ash Pan Scoops are manufactured in the Riveted Back and the Hollow Back types of construction, as described on pages 22 and 24 respectively. The Riveted Back type is furnished in the OLIVER AMES Grade and Common Grade (see pages 6 and 14), in sizes 4, 6 and 8, and equipped with Low Lift Long Handles, 6 ft., 8 ft. and 10ft. long.

The Hollow Back type is furnished in the Common Grade only (see page 14), size 4, and equipped with Low Lift Long Handles, 6 ft., 7 ft., 8 ft., 9 ft., and 10 ft. long.

Ash Pan Scoops are furnished with plain and perforated blades— for cost of perforating see price lists.

RIVETED BACK TYPE	
Nominal Size	List Numbers
4	964
6	966
8	968
HOLLOW BACK TYPE	
Nominal Size	List Number
4	974

For Method of Ordering by List Numbers and Handle Symbols, see page 71.  
For Method of Measuring Blade Dimensions and Lifts, see pages 72 and 73

**BLACK SCOOPS COST LESS AND WEAR LONGER**

**ALL STEEL HANDLE SCOOPS AND ASH PAN SCOOPS**



See facing page for descriptions, sizes, grades, etc.

**BREAKDOWN OR COALING SCOOPS**

(DIAMOND POINT)

Diamond Point Breakdown or Coal Scoops are manufactured in Eastern and Western Patterns.

The Eastern Pattern Breakdown Scoops are furnished in the Hollow Back and Riveted Back types of construction, all as described on pages 24 and 22, respectively, in the sizes listed below and in the OLIVER AMES, Extra and High Grades. For description of grades, see pages 6, 8 and 10.

The Western Pattern Diamond Point Breakdown or Coaling Scoops are manufactured in the Hollow Back type of construction (see page 24), in the sizes listed below and in the OLIVER AMES, Extra and High Grades—see pages 6, 8 and 10, respectively.

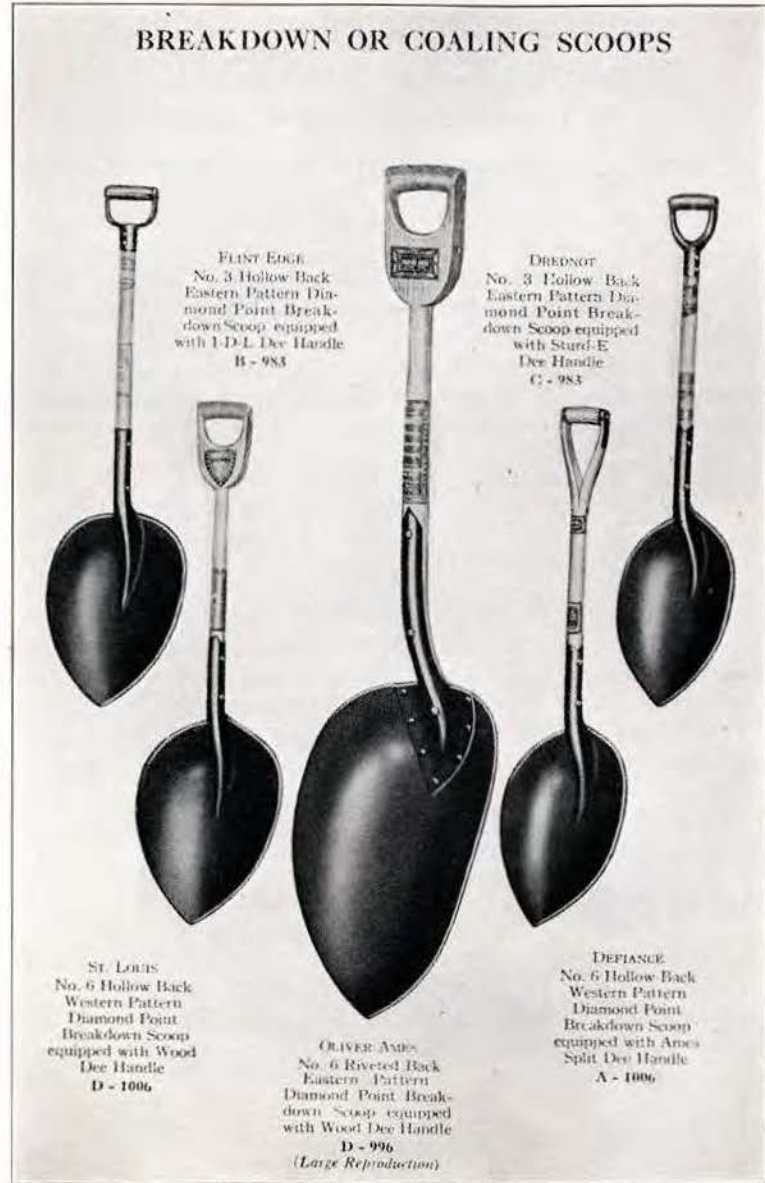
Diamond Point Breakdown or Coaling Scoops, fitted with AMES Split Dee Handles, I-D-L Dee Handles, Sturd-E Dee Handles and Wood Dee Handles are regularly carried in stock. For descriptions and illustrations of handles, see pages 70 and 71.

LIST NUMBERS		
EASTERN PATTERN		
Nominal Size	Hollow Back	Riveted Back
2	982	992
3	983	993
4	984	994
5	985	995
6	986	996
7	987	997
WESTERN PATTERN		
6	1006	
8	1008	
10	1000	
12	1002	

For Method of Ordering by List Numbers and Handle Symbols, see page 74.  
For Method of Measuring Blade Dimensions and Lifts, see pages 72 and 73.

**BLACK SCOOPS COST LESS AND WEAR LONGER**

**BREAKDOWN OR COALING SCOOPS**



See facing page for descriptions, sizes, grades, etc.

**SNOW AND ICE HANDLING TOOLS**

**SIDEWALK SCRAPERS OR CLEANERS**

(For Snow Shovels see pages 40 and 41)

Sidewalk Scrapers or Cleaners are manufactured in the Riveted Back type of construction (see page 22), in sizes 2 and 4 and under the Common Grade—see page 14.

Size 2 is constructed with short length front and back straps riveted to the blade and forming a socket to which the Long Handle is riveted. Size 2 makes a desirable, inexpensive tool for intermittent service.

Size 4 is constructed with regular shovel length front and back straps securely riveted to the blade and the Long Handle, providing a sturdy tool for hard, continuous service.

Nominal Size	Blade Size	List Number
2	6¾ x 6½	1012
4	10 x 6½	1014

**SNOW PUSHERS**

Snow Pushers are manufactured in two sizes, having approximate blade dimensions of 9" x 18" and 9" x 24", respectively, and under the Common Grade, for description of which see page 14.

The blades are bent to a scientific contour to handle the heaviest snows and are made of a gauge sufficiently thick to prevent bending or warping.

The Long Ash Handle is fitted to the blade by means of a pressed steel socket securely connecting the blade and handle.

Nominal Size	Blade Size	List Number
18"	9" x 18"	1028
24"	9" x 24"	1024

For Method of Ordering by List Numbers and Handle Symbols, see page 74.

For Method of Measuring Blade Dimensions and Lifts, see pages 72 and 73.

**BLACK SHOVELS COST LESS AND WEAR LONGER**

**SNOW AND ICE HANDLING TOOLS**  
**SIDEWALK SCRAPERS OR CLEANERS**



GOLD RIBBON  
No. 2 Sidewalk  
Scraper  
L - 1012

GOLD RIBBON  
24" Snow Pusher  
L - 1024

FALLS CITY  
No. 4 Sidewalk  
Scraper  
L - 1014

See facing page for descriptions, sizes, grades, etc.

HANDLES

SHOVELS SPADES SCOOPS

The Shovels, Spades and Scoops listed in this catalog are regularly equipped and stocked with the types of handles noted and illustrated in each section. The handles described below, and illustrated on the facing page, show a wide selection of types. For repair work, any type of head or design of handle can be furnished with the bend best suited for the type of shovel, spade or scoop for which they are intended. When ordering for repair work specify handle symbol, and type and pattern of tool in which they are to be used.

All handles are carefully graded and inspected at the producing mill and the receiving factory and are not used until they have been properly seasoned.

SYMBOL A Illustrates the AMES Split Dee Handle—a light weight, strong handle allowing ample room for the hand. The grain of the grip runs lengthwise with the grip, thereby eliminating the splitting of the grip so prevalent in older types. The handle is assembled and the grip held in position by an off center rivet running through the grip and reinforced by specially constructed steel side clips.

SYMBOL B Illustrates the I-D-L Steel Top Dee Handle manufactured and guaranteed by the American Fork and Hoe Co.

SYMBOL C Illustrates the Sturd-E Steel Top Dee Handle manufactured and guaranteed by the Columbus Handle & Tool Co.

SYMBOL D Illustrates the old type Wood Dee Handle in use for many years but rapidly being replaced by the later and more efficient designs.

SYMBOL E Illustrates the Malleable Peening Dee Handle.

SYMBOL F Illustrates the Miniature Wood Dee Handle.

SYMBOL G Illustrates the Pressed Steel Dee Handle with Wood Grip.

SYMBOL H Illustrates the Malleable Tamping Dee Handle.

SYMBOL L Signifies the Regular 4½ foot Long Handle.

SYMBOL S Signifies the Telegraph Shovel Handle.

SYMBOL T Signifies the Telegraph Spoon Handle.

SYMBOL M Signifies the Flat Sided 4½ foot Long Handle.

SYMBOL N Signifies the Knob End or Manure Fork Handle.

For Method of Ordering by List Numbers and Handle Symbols, see page 74.  
For Method of Measuring Blade Dimensions and Lifts, see pages 72 and 73.

BLACK SHOVELS COST LESS AND WEAR LONGER

HANDLES  
SHOVELS SPADES SCOOPS



See facing page for descriptions

**METHOD OF MEASURING SHOVELS, SPADES AND SCOOPS**

The Shovels, Spades and Scoops listed in this catalogue have been designed and constructed to meet the requirements of the users for the various kinds of work to be performed.

There are some sections of the country which require blade contours and shapes and blade lifts slightly different than other sections, so while the various types of a certain Nominal Size are generally formed from the same size of sheets, the difference in contours necessarily varies the finished dimensions.

In order to avoid confusion and possible misunderstandings, it was deemed advisable to eliminate from this catalogue specific data pertaining to dimensions. Our various plants will be pleased to furnish information of this kind on request.

By reference to the illustrations on the facing page, you will note the usual practice employed in measuring the blade, the lift and the handle length.

Special lifts and special handle lengths can be furnished on order, for prices of which refer to price lists.

Great good has been accomplished by the Committee on Standardization and Simplification in the Shovel Industry, working with the Division of Simplified Practice, Washington, D. C., and as time progresses the number of sizes, types, patterns and grades will be reduced and simplified all to the advantage of the Distributors, Dealers, Consumers and Manufacturers of Shovels, Spades and Scoops.

BLACK SHOVELS COST LESS AND WEAR LONGER

**METHOD OF MEASURING SHOVELS, SPADES AND SCOOPS**

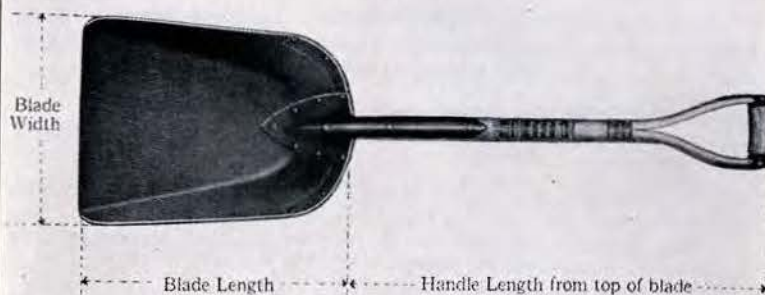


Illustration of front view of Scoop showing dimensions of Blade Width and Length and Handle Length.



Illustration of side view of Scoop showing dimensions of Length over all, Handle Length from top of blade and Blade Lift

BLACK SHOVELS COST LESS AND WEAR LONGER



E	PAGE	H (Cont'd)	PAGE
Eastern Pattern Breakdown Scoops	66-67	Hollow Back Ore Shovels	38-39
Eastern Pattern Scoops	56-57	Hollow Back Sand or Gravel Scoops	60-61
Eastern Pattern Telegraph Spoons	44-45	Hollow Back Scoops	56-67, inc.
Enduro Brand	10-11	Hollow Back Shovels	24-25
Excelsior Brand	12	Holmes Brand	10
Extra Grade	8-9	Holton Brand	10

F	PAGE	I	PAGE
Falls City Brand	14-15	Ideal Brand	12
Favorite Brand	14	I-D-L Metal Dee Handles	70-71
Finish (Extra)	4	Intermediate Grade	12-13
Fisher Brand	10	Iowa Pattern Spades	52-53
Flint Edge Brand	8-9	Irrigating Shovels	34-35
Foreword	3		
Freeman Brand	14		
Full Spring Point Mining Shovels	32-33		
Furnace Scoops	62-63	J	
		Jack Pattern Scoops	56-57

G	PAGE	K	PAGE
Garden Spades	48-49	Keeler Brand	12-13
Gold Ribbon Brand	14-15	Knob End Long Handles	70
Gordon Brand	12		
Grades	5-6-8-10-12-14		
Grafting Spades	54-55		
Grain Pattern Scoops	58-59	L	
Grain Trimmer Scoops	60-61	Labels (Brands)	5-15, inc.
Gravel Scoops	60-61	Ladies' Shovels (see Boys' Shovels)	30-31
Griffiths Brand	10-11	Ladies' Spades (see Boys' Spades)	52-53
Grifrow Brand	14-15	Lane Brand	12
Guaranty	2	Lee Brand	12-13
		Light Weight, Long Handle,	
		Round Point Shovels	42-43
		Lime Shovels	30-31

H	PAGE	L	PAGE
Hadwin Brand	12	Locomotive Scoops (see Eastern	
Half Spring Point Mining Shovels	32-33	Pattern Scoops)	56-57
Handles	70-71	Long Handles	70
Harlan Brand	12	Long Handle Scoops	56-67, inc.
Helmet Brand	12-13	Long Handle Shovels	16-47, inc.
High Grade	10-11	Long Handle Spades	48-55, inc.
Hollow Back Breakdown Scoops	66-67	Long Handle Snow Shovels	40-41
Hollow Back Coal Shovels	46-47	Low Lift Ash Pan Scoops	64-65
Hollow Back Furnace Scoops	62-63	Low Lift Charging Scoops	60-61

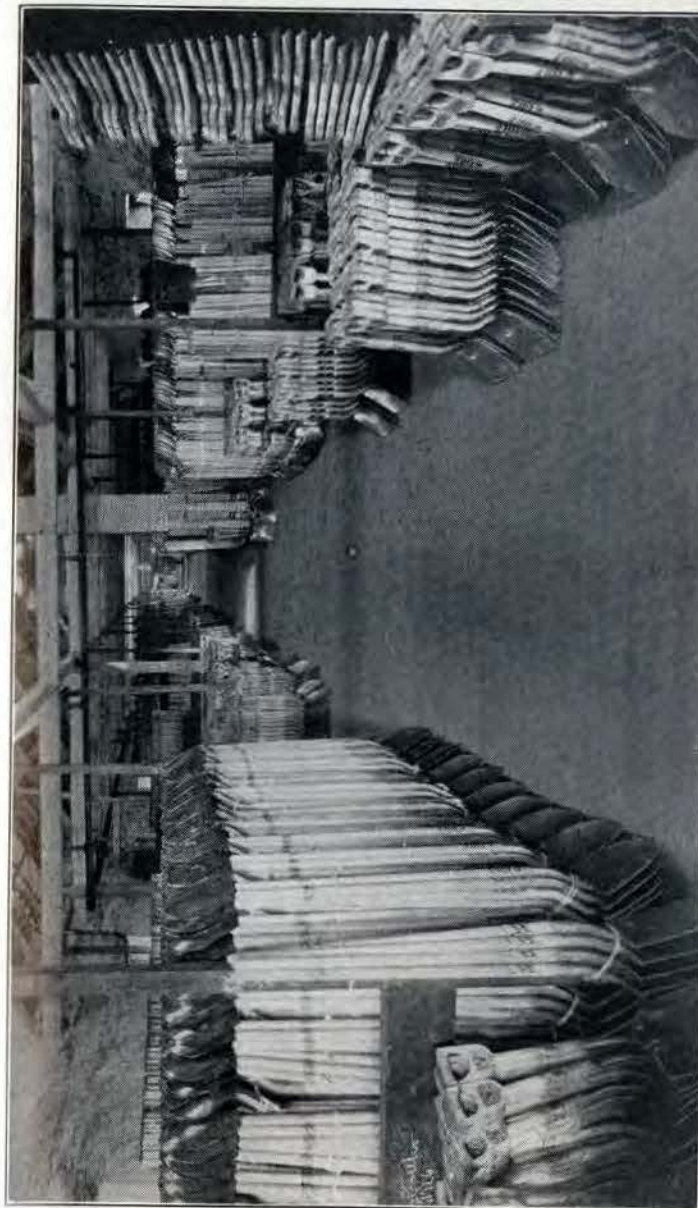
M	PAGE	P (Cont'd)	PAGE
Malleable Peening Dee Handles	70-71	Plain Back Shovels (One Piece	
Malleable Tamping Dee Handles	70-71	type)	20-21
Massachusetts Brand	14-15	Plain Back Shovels (Steel Edge	
Master Brand	14	type)	26-27
Meteor Brand	14	Plain Back Shovels (Welded type)	16-17
Method of Measuring	72-73	Porter Brand	10-26
Method of Ordering	74	Post Spades	50-51
Miller Brand	14	Pressed Steel Dee Handles	70-71
Miniature Wood Dee Handles	70-71	Prices	4
Mining Shovels	32-33		
Moon Brand	14		
Moulder Shovels	28-29		
Myers Brand	10-11		
Myers Patent (see One Piece Plain			
Back)	20		

N	PAGE	R	PAGE
Narrow Point Grafting Spades	54-55	Railroad Shovels	36-37
Naylor Brand	14	Reed Brand	10
Nicholson Brand	12-13	Rice Shovels	34-35
Nursery Spades	54-55	Riveted Back Breakdown Scoops	66-67
		Riveted Back Furnace Scoops	62-63
		Riveted Back Mining Shovels	32-33
		Riveted Back Railroad or Track	
		Shovels	36-37
		Riveted Back Scoops	56-67, inc.
		Riveted Back Shovels	22-23
		Riveted Back Snow Shovels	40-41
		Round Mouth Sand or Gravel	
		Scoops	60-61
		Round Point Ditching Shovels	30-31
		Round Point Scoops	56-57
		Round Point Shovels	16-47, inc.
		Rowland Brand	12

O	PAGE	S	PAGE
Old Style Snow Shovels	40-41	St. Louis Brand	8-9
Oliver Ames Grade or Brand	6-7	Sand Scoops	60-61
One Piece Shovels	20-21	Sanderson Brand	10
Orders	4-74	Scoop Handles	70-71
Ore Shovels	38-39	Scoops	56-67, inc.
Oyster Scoops	62-63	Sellers Brand	14
		Sewer Shovels	32-33
		Shipments	4
		Shovel Handles	70-71
		Shovels	16-47, inc.

P	PAGE	S	PAGE
Packer Brand	12		
Packing	4		
Peening Handles	70-71		
Peerless Brand	14-15		
Penn Brand	14		
Perforated Concrete Spades	52-53		
Perforated Irrigating or Rice			
Shovels	34-35		
Pilgrim Brand	12		

S (Cont'd)		T (Cont'd)	
	PAGE		PAGE
Sidewalk Cleaners.....	68-69	Terms.....	4
Sidewalk Scrapers.....	68-69	Thomas Brand.....	14
Small Socket Hollow Back Scoops.....	58-59	Thor Brand.....	8-9
Snow & Ice Handling Tools.....	68-69	Thorn Brand.....	12
Snow Pushers.....	68-69	Track Shovels.....	36-37
Snow Shovels.....	40-41	Tricor Shovels.....	38-39-46-47
Sod Pit Shovels.....	42-43	Tri-Me Brand.....	14
Solid Shank Irrigating Shovels.....	34-35	Trimmer Scoops.....	60-61
Solid Shank Railroad or Track Shovels.....	36-37	Tunnelling Shovels (see Sewer Shovels).....	32-33
Solid Shank Rice Shovels.....	34-35	Two Strap Solid Socket Railroad or Track Shovels.....	36-37
Solid Shank Shovels.....	18-19		
Solid Shank Spades.....	48-55, inc.		
Solid Socket Shovels.....	18-19	<b>U</b>	
Spade Handles.....	70-71	Union Shovel Co. Brand.....	14
Spades.....	48-55, inc.		
Spading Shovels.....	30-31	<b>V</b>	
Special Construction.....	4	Valley Forge Brand.....	12-13
Split Dee Handles.....	70-71	Vaterland Brand.....	10
Split Socket Shovels.....	18-19	Vaterland Spades.....	52-53
Spoon Handles.....	70	Vigo Brand.....	14
Spoons.....	44-45	Vim Brand.....	12-13
Square Point Shovels.....	16-17, inc.		
Steel Edge Shovels.....	26-27	<b>W</b>	
Steel Edge Spades.....	48-49	Wayde Brand.....	14
Steel Handle Scoops.....	64-65	Weber Brand.....	12
Stiff Point Mining Shovels.....	32-33	Webster Brand.....	12
Stone Brand.....	14	Welded Plain Back — see Plain Back	
Strap Shovels—see Plain Back—		Western Pattern Breakdown	
Steel Edge — Riveted Back		Scoops.....	66-67
Sturd-E Dee Handles.....	70-71	Western Pattern Coaling Scoops..	66-67
Sunken Back Shovels.....	36-37	Western Pattern Scoops.....	58-59
Sycamore Brand.....	14-15	Western Union Pattern Telegraph	
		Spoons.....	44-45
		Wide Point Grafting Spades.....	54-55
		Wilson Brand.....	12
		Wood Dee Handles.....	70-71
		Wrighto Brand.....	10-11
		Wright Shovel Co. Brand.....	12
		Wright's Extra Brand.....	10
		<b>X</b>	
		XXX Brand.....	14



One of the Store Rooms at North Easton, Massachusetts, where over 150,000 Factory Brand Shovels, Spades and Scoops are carried for quick delivery to our customers





Ames Building, Boston, Massachusetts  
Location of Executive Offices of the  
Ames Shovel and Tool Co.