

AMES SHOVEL AND TOOL CO.

BOSTON, U.S.A.

Catalog No. 152



Branches

OLIVER AMES & SONS CORP.
T. ROWLAND'S SONS, INC.
GEORGE GRIFFITHS CO.

THE H. M. MYERS CO.
WRIGHT SHOVEL CO.
ST. LOUIS SHOVEL CO.

Combined Catalog No. 152
OF
SHOVELS, SPADES and SCOOPS

Manufactured by
AMES SHOVEL AND TOOL COMPANY
Ames Building, BOSTON, MASS., U. S. A.

Owner of
OLIVER AMES AND SONS CORP.
North Easton, Mass.

T. ROWLAND'S SONS, INC.
Cheltenham, Pa.

GEORGE GRIFFITHS CO.
Cheltenham, Pa.

H. M. MYERS CO
Anderson, Ind.

WRIGHT SHOVEL CO.
Anderson, Ind.

ST LOUIS SHOVEL CO.
St. Louis, Mo.

Makers of High Grade Shovels Since 1774

FOREWORD

THE Ames Shovel and Tool Company owns and operates shovel manufacturing factories located at North Easton, Mass., Cheltenham, Pa., Anderson, Ind. and St. Louis, Mo.; handle producing plants at Oakland and Cumberland Mills, Me., and New Albany, Ind.; and steel rolling mills at Elwood, Ind.

The shovel producing factories are so located that the consuming trade can be served in the quickest possible time, thereby enabling the distributors of the Company to operate with minimum inventories of shovels, spades and scoops. Two of the shovel producing factories are located within trucking distance of tide water, at Boston (North Easton) and Philadelphia (Cheltenham), permitting quick and low-cost deliveries to all points reached by water routes. In addition, the plants of the Company have railroad sidings with connections to the main trunk lines; and the St. Louis plant, by means of the Mississippi River, has splendid service to points south.

The Ames Shovel and Tool Company manufactures only shovels, spades, scoops and allied tools and, by concentration of effort, aims to produce the best tools of these kinds on the market.

Each of the shovel companies listed in this catalog is old in years of service and experience, is thoroughly conversant with the requirements of the trade, and is well able to supply the needs of its customers.

Modernized equipment combined with time-saving devices permits low-cost production, enabling the Company to place on the market high-grade tools at very moderate prices.

A research department, thoroughly equipped with an analytical and physical testing laboratory, has been installed at North Easton, Mass., permitting exacting tests of all parts entering into the construction of its products.

The first shovels manufactured in the United States were made by the Oliver Ames and Sons Corp., which dates back to 1774, and its standards and leadership have been maintained since that time.

With the facilities of these shovel manufacturing plants, all types, styles and grades of shovels, spades and scoops are produced, permitting a concentration of orders and a combination of shipments.

Your particular attention is directed to the original Ames Heavy Double Bend, the most efficient bend yet devised for use in shovel construction; a handle bend which enables the user to produce the greatest amount of work with the least physical effort.

Each of the shovel companies, while operating as a separate corporation, serves as a branch factory and office of the Ames Shovel and Tool Company, and in that capacity serves also as the representative of every other factory of the Company.

Supplies of the principal materials used in the construction of shovels, spades and scoops are assured through the Company's handle plants and steel rolling mills, permitting operations to pre-determined standards and eliminating delays usually caused by inability to secure prompt deliveries of materials from outside sources.

In the preparation of this catalog special thought was given to a clear description and illustration of the many types and kinds of shovels, spades and scoops needed by the various industries and to the simplification of sizes, types and brands.

An index will be found at the end of the catalog—much time can be saved by reference to it.

You are referred to the following pages with the hope that you will find therein all the information necessary for a thorough understanding of this line of merchandise.

GUARANTY

We guaranty our products against failure in service due to defects in materials or workmanship.

Any of our products of Grades and Labels listed herein and bearing our identification marks, having failed in service due to imperfections in materials or workmanship, will, after examination at any of our factories, be replaced with similar tools at prices commensurate with the service rendered by the defective tools.

AMES SHOVEL AND TOOL CO.

Copyright 1926
AMES SHOVEL AND TOOL CO.,
Boston, Mass.

GENERAL PRICES AND TERMS

Prices, terms and conditions covering the sale of the tools listed herein are noted in separate price lists which will be furnished on request.

PACKING

Shovels, spades and scoops are packed one-half dozen to the bundle; securely tied to assure satisfactory delivery to destination. When specifically so ordered, goods will be burlapped or crated, for cost of which see price lists.

FINISH AND SPECIAL CONSTRUCTION

UNLESS OTHERWISE ORDERED, GOODS WILL BE SHIPPED IN BLACK OR NATURAL FINISH

For extra cost of special finish see price lists. Special constructions such as perforated blades, extra length blade straps, shoulder straps, special handle lengths, etc., can be furnished, for cost of which see price lists.

ORDERS AND SHIPMENTS

Shipments of orders will be made as promptly as the conditions of our factories will permit, but we will not be held responsible for delays due to fires, strikes, accidents or other causes beyond our control.

To assure the best delivery, we request that orders be forwarded to our nearest factory or branch office with the understanding that the whole or part will be relayed to our other factories if the receiving factory is unable to meet the specifications or effect delivery as requested.

For Method of Ordering, please refer to page 74.

BLACK SHOVELS COST LESS AND WEAR LONGER

TRADE-MARKS, GRADES AND LABELS

The labels and names referred to in this catalog are our **TRADE-MARKS**, which are legally protected and guarantee that the goods are of our manufacture.

The Shovels, Spades and Scoops, illustrated and described on the following pages, are manufactured in a number of grades, each designed to meet the needs of the various kinds of work to be performed, and so classified to give a wide price selection.

Each grade is manufactured as such, under detailed specifications prepared for its construction.

Each grade passes through the same general processes of development and inspection, and when completed is first class in all respects and worthy of the service for which it is intended and of the price charged.

BLACK SHOVELS COST LESS AND WEAR LONGER

OLIVER AMES GRADE

The OLIVER AMES Grade is in a class by itself, representing the best in materials and workmanship that can be produced.

In the manufacture of OLIVER AMES shovels, spades and scoops, there is no middle ground; each tool must meet the specifications, tests and inspections without doubt and must be worthy to carry the name OLIVER AMES, the standard in shovel-making since 1774.

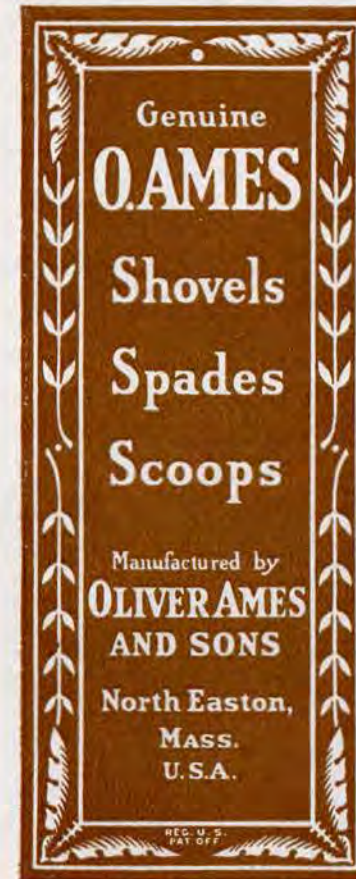
There is an OLIVER AMES shovel, spade or scoop for every kind of work, and where low cost of operation is imperative, OLIVER AMES tools are the most economical tools to use.

The handles used in OLIVER AMES tools are XX second-growth Northern ash, the best that can be procured—all sanded, waxed and polished.

The blades are fabricated from alloy steel of special analysis, giving to OLIVER AMES tools that degree of toughness that can be obtained only by these special properties. The blades are fully heat treated, resulting in a resistance, both to wear and distortion, that is unequalled in any similar tool.

OLIVER AMES tools are distributed throughout the world, and, due to the demand created by their many years of service, by the superiority of the materials entering into their construction and by the general publicity back of them, are readily sold, and therefore make a most desirable line for distribution.

BLACK SHOVELS COST LESS AND WEAR LONGER

OLIVER AMES LABELS

EXTRA GRADE

The Extra Grade is manufactured in practically all types and kinds of shovels, spades and scoops, under the labels and by the companies listed below.

All tools under this grade are equipped with XX grade, second-growth Northern ash handles—sanded, waxed and polished.

The blades of Extra Grade tools are specially treated to resist abrasion and distortion under the hardest service, and due to this special treatment are lighter in gauge and weight and therefore make more efficient tools than tools of which the blades are not so treated.

Extra Grade shovels, spades and scoops are manufactured under the following Brands or Labels:

T. ROWLAND'S SONS, INC., CHELTENHAM, PA.
FLINT EDGE

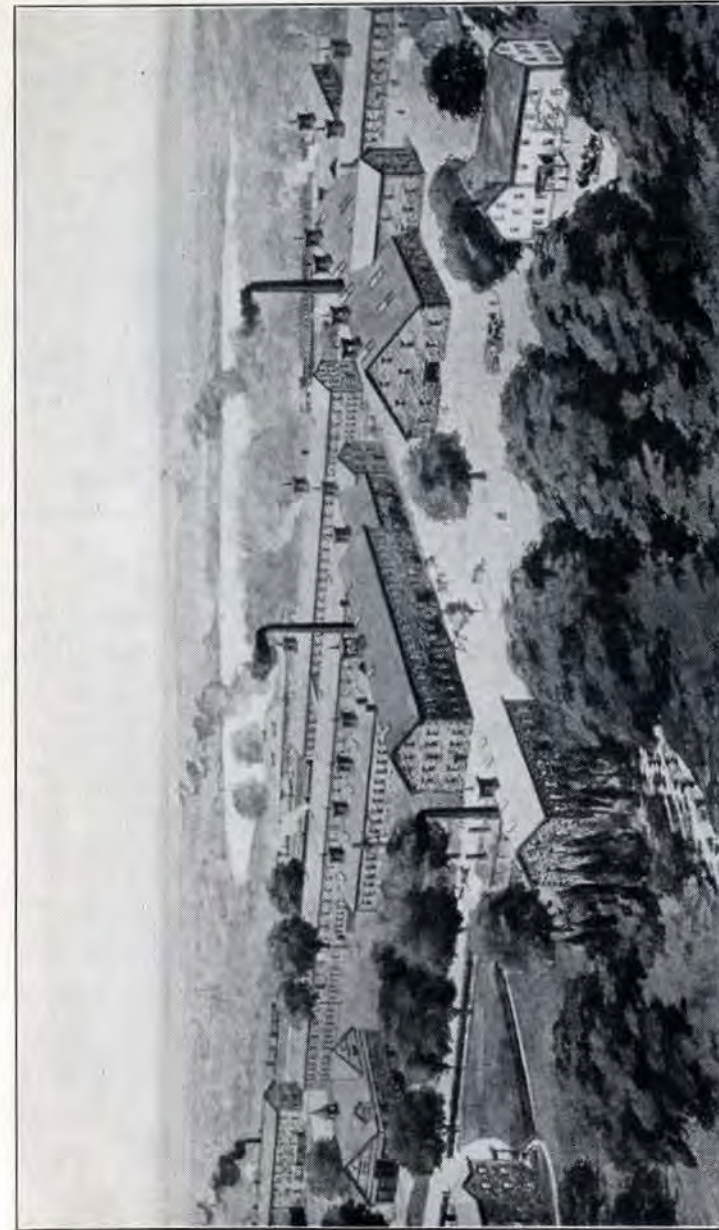
GEORGE GRIFFITHS CO., CHELTENHAM, PA.
THOR

H. M. MYERS COMPANY, ANDERSON, IND.
DEFIANCE

WRIGHT SHOVEL CO., ANDERSON, IND.
DREDNOT

ST. LOUIS SHOVEL CO., ST. LOUIS, MO.
ST. LOUIS

BLACK SHOVELS COST LESS AND WEAR LONGER



The plant of the Oliver Ames & Sons Corp. North Easton, Massachusetts, one of the shovel plants of the Ames Shovel and Tool Company

HIGH GRADE

The High Grade (Class A) is manufactured in practically all types and kinds of shovels, spades and scoops under the labels and by the companies listed below.

The blades of High Grade tools are made of steel of an analysis and gauge to warrant excellent service under hard usage. Northern ash XX handles are used in this grade, thereby giving greatest strength where most needed.

High Grade is all the term implies, and for good, high-class, well-finished, salable tools is everything that can be desired.

High Grade shovels, spades and scoops are manufactured under the following brands or labels—those listed in **Bold Type** being the most popular:

OLIVER AMES & SONS CORP, NORTH EASTON, MASS.

CARTER,—also BLAIR, DAY, PORTER (steel edge), REED, SANDERSON.

T. ROWLAND'S SONS, INC., CHELTENHAM, PA.

CHELTENHAM,—also APOLLO (all steel handle scoops), BARTLETT, DENIM, FISHER, HOLMES.

GEORGE GRIFFITHS CO., CHELTENHAM, PA.

GRIFFITHS,—also APOLLO (all steel handle scoops), DOUGLAS.

H. M. MYERS COMPANY, ANDERSON, IND.

MYERS,—also BEAVER FALLS.

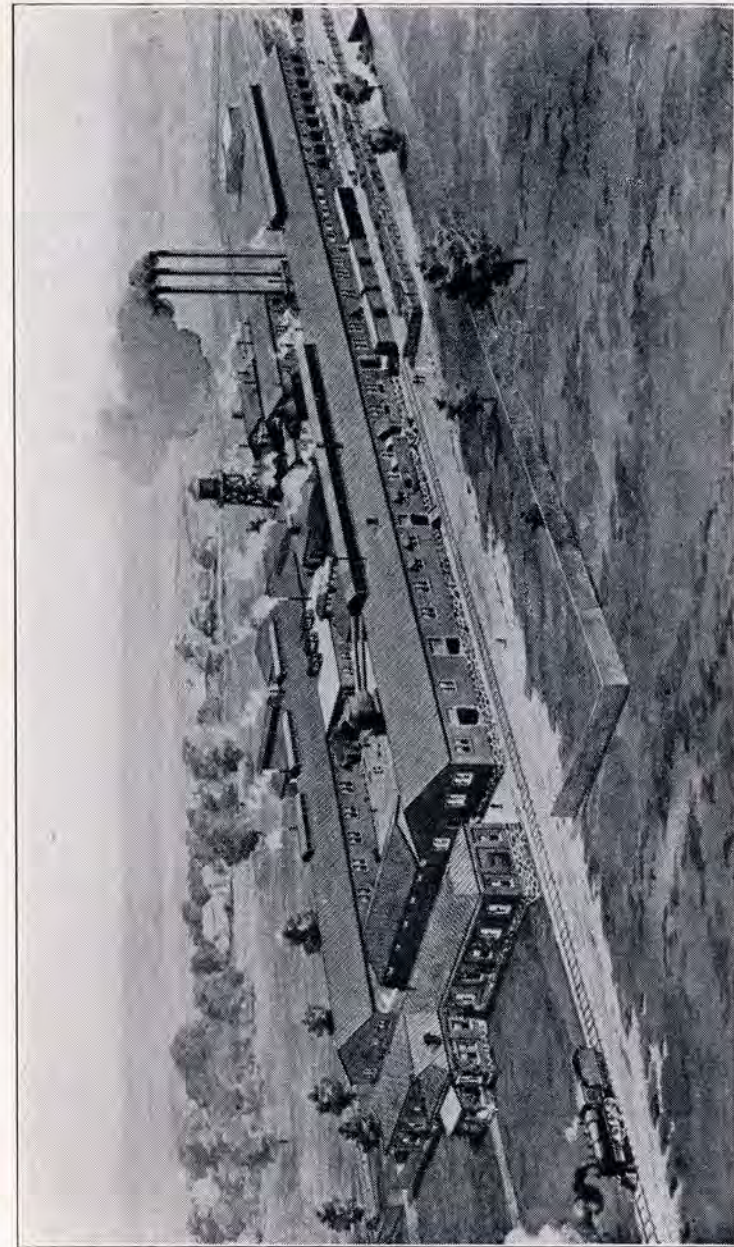
WRIGHT SHOVEL CO., ANDERSON, IND.

WRIGHTO, (solid socket excl.),—**ENDURO**,—also VATERLAND (Diamond Point spade), **WRIGHT'S EXTRA**

ST. LOUIS SHOVEL CO., St LOUIS, Mo.

BLACK DIAMOND, (solid socket excl.),—**BIRGE**,—also **HOLTON**, VATERLAND (Diamond Point spade).

BLACK SHOVELS COST LESS AND WEAR LONGER



The plant of the Wright Shovel Company, Anderson, Indiana, one of the shovel plants of the Ames Shovel and Tool Company

INTERMEDIATE GRADE

The Intermediate Grade (Class B) is manufactured in practically all types and kinds of shovels, spades and scoops under the labels and by the companies listed below.

Intermediate Grade tools are designed to meet the needs of those requiring serviceable tools for general use and where price is a consideration. Northern ash X grade handles are used for Intermediate Grade tools and the blades are constructed of steel of an analysis and thickness to deliver service commensurate with the prices charged for this grade.

Intermediate Grade shovels, spades and scoops are manufactured under the following brands or labels, the more popular brands being listed in **Bold Type**:

OLIVER AMES & SONS CORP., NORTH EASTON, MASS.

A. LEE,—also **CARR, HADWIN.**

T. ROWLAND'S SONS, INC., CHELTENHAM, PA.

HELMET,—also **BAXTER, BOARDMAN, DELVE, DEXTER, GORDON, ROWLAND, WEBER, WILSON.**

GEORGE GRIFFITHS CO., CHELTENHAM, PA.

VALLEY FORGE,—also **BAIRD, HARLAN, LANE, PACKER, WEBSTER.**

H. M. MYERS CO., ANDERSON, IND.

KEELER,—also **EXCELSIOR, PILGRIM.**

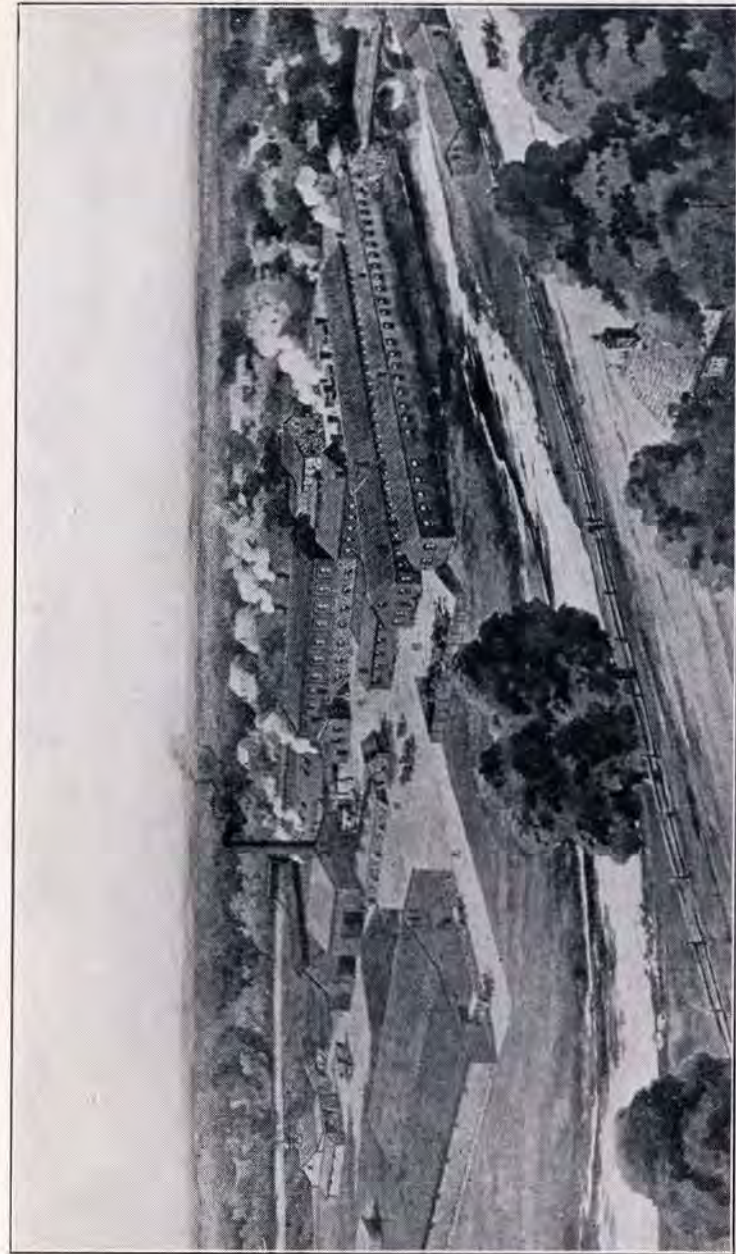
WRIGHT SHOVEL CO., ANDERSON, IND.

VIM,—also **IDEAL, WRIGHT SHOVEL CO.**

ST. LOUIS SHOVEL CO., ST. LOUIS, MO.

NICHOLSON,—also **BYRNE, CRANE, THORN.**

BLACK SHOVELS COST LESS AND WEAR LONGER



The plant of T. Rowland's Sons, Inc., Cheltenham, Pennsylvania, one of the shovel plants of the Ames Shovel and Tool Company

COMMON GRADE

The Common Grade (Class C) is manufactured in practically all types and kinds of shovels, spades and scoops under the labels and by the companies listed below.

Common Grade tools are all that the term implies, being sold for final distribution to those desiring shovels, spades or scoops for intermittent service.

The specifications of manufacture are similar to those of the higher grades, differing from those of the higher grades, however, in the quality and thickness of the blades, in the quality and finish of the handles and in the class of workmanship.

The Common Grade shovels, spades and scoops are not recommended for hard service and where low cost of operation is an important consideration.

Common Grade shovels, spades and scoops are manufactured under the following brands or labels, the more popular brands being listed in **Bold Type**:

**OLIVER AMES AND SONS CORP., NORTH EASTON, MASS.
MASSACHUSETTS,**—also ADAMS (steel edge), NAYLOR.

**T. ROWLAND'S SONS, INC., CHELTENHAM, PA.
GOLD RIBBON,**—also CLEVELAND, FREEMAN, MASTER, METEOR,
MOON, THOMAS, WAYDE, XXX.

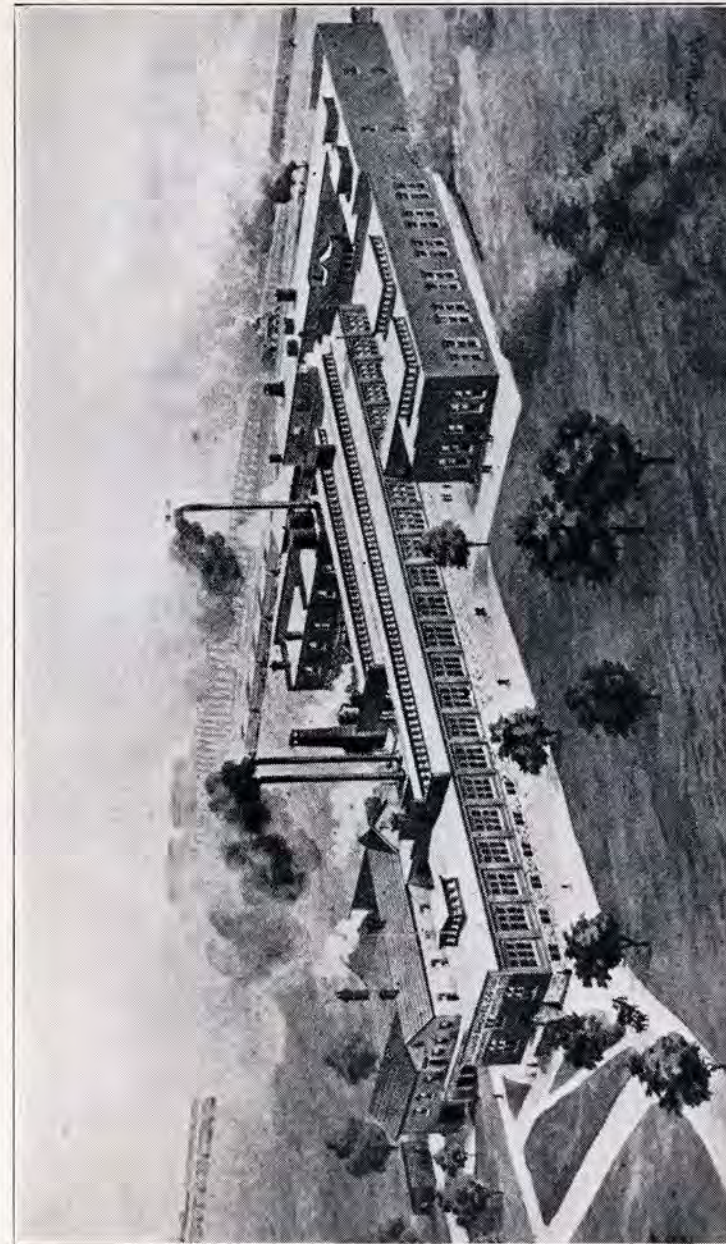
**GEORGE GRIFFITHS CO., CHELTENHAM, PA.
GRIFROW,**—also PENN, SELLERS, STONE.

**H. M. MYERS CO., ANDERSON, IND.
FALLS CITY,**—also MILLER, TRI-ME.

**WRIGHT SHOVEL CO., ANDERSON, IND.
SYCAMORE,** (solid shank, excl.), **ANDERSON,**—also CLIMAX,
FAVORITE, UNION SHOVEL CO., VIGO.

**ST. LOUIS SHOVEL CO., ST. LOUIS, MO.
PEERLESS,**—also BELMONT, CARPENTER, VIGO.

BLACK SHOVELS COST LESS AND WEAR LONGER



The plant of the St. Louis Shovel Co., St. Louis, Missouri, one of the shovel plants of the Ames Shovel and Tool Company.

WELDED PLAIN BACK SHOVELS
STANDARD SQUARE AND ROUND POINT BLADES

The Welded Plain Back Shovels (Antrim Patent) are designed and constructed for general and hard service. The blades are formed and sized from sheet steel of an analysis to best meet the conditions under which they are to be used and in accordance with the classification under which they are sold. The front and back straps are welded to and made an integral part of the blade, with the use of steel of an analysis which will permit shaping to the handle.

Shovels of this construction are light and strong, having smooth blade surfaces both front and back and in general presenting a neat, salable appearance.

The Standard Square and Round Point Welded Plain Back Shovels are manufactured in five grades, viz., OLIVER AMES, Extra, High, Intermediate and Common Grades, for descriptions of which see pages 6, 8, 10, 12 and 14, respectively.

The following sizes and types equipped with AMES Split Dee Handles, I-D-L Dee Handles, Sturd-E Dee Handles, Wood Dee Handles, and Regular 4 1/2 foot Long Handles are regularly carried in stock. For descriptions and illustrations of handles, see pages 70 and 71.

Nominal Size	LIST NUMBERS	
	Square Point	Round Point
2	12 S	12 R
3	13 S	13 R
4	14 S	14 R
6	16 S	16 R

For Method of Ordering by List Numbers and Handle Symbols, see page 74.

For Method of Measuring Blade Dimensions and Lifts, see pages 72 and 73.

BLACK SHOVELS COST LESS AND WEAR LONGER

WELDED PLAIN BACK SHOVELS
STANDARD SQUARE AND ROUND POINT BLADES



See facing page for descriptions, sizes, grades, etc

SOLID SHANK SHOVELS

**SOLID SOCKET AND SPLIT SOCKET TYPES
STANDARD SQUARE AND ROUND POINT BLADES**

Solid Shank Shovels are designed and constructed to meet the need of light-weight, nicely balanced, general purpose shovels.

The blade and shank are rolled from a single block of steel and so formed that the blade gradually tapers to the edges, permitting a thick center and providing strength and firmness where needed.

Standard Square and Round Point Solid Shank Shovels are manufactured with two types of sockets, the solid socket and the split socket.

The Solid or Closed Socket type provides a firm, strong receptacle for the handle, the handle being securely held by a steel wedge, thus permitting quick replacement of handle when necessary. The Solid Socket type is manufactured in three grades, viz., OLIVER AMES, Extra and High Grades, for descriptions of which see pages 6, 8 and 10, respectively.

The Split Socket or Open Back type is formed around the handle and securely riveted to the handle. The Split Socket type is manufactured in two grades, viz., the Intermediate and Common Grades, for descriptions of which see pages 12 and 14, respectively.

The blades of all Solid Shank Shovels, both Solid Socket and Split Socket types, are specially treated to resist abrasion and distortion.

The following sizes and types, equipped with AMES Split Dee Handles, I-D-L Dee Handles, Sturd-E Dee Handles, Wood Dee Handles and Regular 4½ foot Long Handles are regularly carried in stock. For descriptions and illustrations of handles, see pages 70 and 71.

Nominal Size	LIST NUMBERS	
	Square Point	Round Point
1	21 S	21 R
2	22 S	22 R

For Method of Ordering by List Numbers and Handle Symbols, see page 74
For Method of Measuring Blade Dimensions and Lifts, see pages 72 and 73

BLACK SHOVELS COST LESS AND WEAR LONGER

SOLID SHANK SHOVELS

STANDARD SQUARE AND ROUND POINT BLADES



WRIGHT
No. 2 Round Point
Solid Socket type
Solid Shank Shovel
equipped with regu-
lar Wood Dee Handle
D - 22 R

SYCAMORE
No. 2 Round Point
Split Socket type
Solid Shank Shovel
equipped with
I-D-L Dee Handle
B - 22 R

OLIVER AME-
No. 2 Square Point
Solid Socket Shovel
equipped with Ames
Split Dee Handle
A - 22 S
(Large Reproduction)

CHELtenham
No. 2 Round Point
Solid Socket Long
Handle Shovel
L - 22 R

BLACK DIAMOND
No. 2 Square Point
Solid Socket Long
Handle Shovel
L - 22 S

See facing page for descriptions, sizes, grades, etc.

ONE PIECE PLAIN BACK SHOVELS
STANDARD SQUARE AND ROUND POINT BLADES



The One Piece Plain Back Shovels (Myers Patent) are manufactured by rolling the blade and straps from a solid steel bar previously sheared to the shape of the trade-mark illustrated above, the base forming the blade and the projections forming the two straps, thereby producing a blade with straps of one piece of steel, free from welds or rivets.

The process used in rolling forms a blade with a thick center, tapering or graduating towards the edges and point, which compensates for the wearing away of the back of the shovel when used, the tool retaining its perfect shape until completely worn out. The blades vary in thickness, analysis and treatment and the handles in quality in accordance with the grade of tool desired.

The Standard Square and Round Point One Piece Plain Back Shovels are manufactured with plain or narrow straps only and are manufactured in three grades, viz., the High, Intermediate and Common Grades, for descriptions of which see pages 10, 12 and 14, respectively.

The following sizes and types, equipped with AMES Split Dee Handles, I-D-L Dee Handles, Sturd-E Dee Handles, Wood Dee Handles and Regular 4½ foot Long Handles are regularly carried in stock. For descriptions and illustrations of handles, see pages 70 and 71

Nominal Size	LIST NUMBERS	
	Square Point	Round Point
2	32 S	32 R
3	33 S	33 R
4	34 S	34 R

For Method of Ordering by List Numbers and Handle Symbols, see page 74.
For Method of Measuring Blade Dimensions and Lifts, see pages 72 and 73.

BLACK SHOVELS COST LESS AND WEAR LONGER

ONE PIECE PLAIN BACK SHOVELS
STANDARD SQUARE AND ROUND POINT BLADES



KEELER
No. 2 Round Point
One Piece Plain Back
Shovel equipped with
Wood Dee Handle
D - 32 R

ANDERSON
No. 2 Square Point
One Piece Plain Back
Shovel equipped with
Ames Split
Dee Handle
A - 32 S

MYERS
No. 2 Round Point
One Piece Plain Back
Shovel equipped with
Sturd-E Dee Handle
C - 32 R
(Large Reproduction)

GRIFFITH'S
No. 2 Round Point
One Piece Plain Back
Long Handle Shovel
L - 32 R

FALLS CITY
No. 2 Square Point
One Piece Plain Back
Long Handle Shovel
L - 32 S

See facing page for descriptions, sizes, grades, etc.

RIVETED BACK (BACK STRAP) SHOVELS
STANDARD SQUARE AND ROUND POINT BLADES

The Riveted Back Shovels are designed and constructed to meet the requirements of those needing stiff, strong shovels for handling coarse materials, such as stone, gravel, etc.

The blades are cut and formed from sheet steel of a thickness and analysis to fill the specifications of the grade desired.

The front and back straps are cut and formed and securely riveted to the blade and handle, forming a substantial tool to withstand the heaviest kind of work.

Standard Square and Round Point Riveted Back Shovels are manufactured in five grades, viz., the OLIVER AMES, Extra, High, Intermediate and Common Grades, for descriptions of which see pages 6, 8, 10, 12 and 14, respectively.

The following sizes and types, equipped with AMES Split Dee Handles, I-D-L Dee Handles, Sturd-E Dee Handles, Wood Dee Handles and Regular 4½ foot Long Handles are regularly carried in stock. For descriptions and illustrations of handles, see pages 70 and 71.

Nominal Size	LIST NUMBERS	
	Square Point	Round Point
2	42 S	42 R
3	43 S	43 R
4	44 S	44 R
6	46 S	46 R

For Method of Ordering by List Numbers and Handle Symbols, see page 74.
For Method of Measuring Blade Dimensions and Lifts, see pages 72 and 73.

BLACK SHOVELS COST LESS AND WEAR LONGER

RIVETED BACK (BACK STRAP) SHOVELS
STANDARD SQUARE AND ROUND POINT BLADES



See facing page for descriptions, sizes, grades, etc.

HOLLOW BACK SHOVELS

STANDARD SQUARE AND ROUND POINT BLADES

The Hollow Back Shovels are designed to meet the needs of those requiring light, serviceable shovels less in cost than the plain back types.

Hollow Back Shovels are particularly adapted for handling coarse, loose materials, such as stone, slag, gravel, etc. and are not as satisfactory as plain back types in handling clay, loam, concrete, etc., or for digging purposes.

The blade and frog are pressed to shape from sheet steel of a thickness and analysis to fulfill the specifications of the grade desired.

Standard Square and Round Point Hollow Back Shovels are manufactured in five grades, viz., the OLIVER AMES, Extra, High, Intermediate and Common Grades, for descriptions of which see pages 6, 8, 10, 12 and 14, respectively.

The following sizes and types, equipped with AMES Split Dee Handles, I-D-L Dee Handles, Sturd-E Dee Handles, Wood Dee Handles and Regular 4½ foot Long Handles are regularly carried in stock. For descriptions and illustrations of handles, see pages 70 and 71.

Nominal Size	LIST NUMBERS	
	Square Point	Round Point
2	52 S	52 R
3	53 S	53 R
4	54 S	54 R
6	56 S	56 R

For Method of Ordering by List Numbers and Handle Symbols, see page 74.

For Method of Measuring Blade Dimensions and Lifts, see pages 72 and 73.

BLACK SHOVELS COST LESS AND WEAR LONGER

HOLLOW BACK SHOVELS

STANDARD SQUARE AND ROUND POINT BLADES



FLINT EDGE
No. 2 Round Point
Hollow Back Shovel
equipped with Sturd-
E Dee Handle
C - 52 R

DREDGER
No. 2 Round Point
Hollow Back Shovel
equipped with
I-D-L Dee Handle
B - 52 R

OLIVER AMES
No. 2 Square Point
Hollow Back Shovel
equipped with Ames
Split Dee Handle
A - 52 S
(Large Reproduction)

DEFIANCE
No. 2 Square Point
Hollow Back
Long Handle Shovel
L - 52 S

St. LOUIS
No. 2 Round Point
Hollow Back
Long Handle Shovel
L - 52 R

See facing page for descriptions, sizes, grades, etc

STEEL EDGE PLAIN BACK SHOVELS
STANDARD SQUARE AND ROUND POINT BLADES

The Steel Edge Plain Back Shovels are manufactured by a process of shovel-making originated during the infancy of the shovel industry. The blade is hammered from a bar of comparatively soft steel, during which process a piece of hard steel is inserted and so welded that a blade is produced having two outer layers of soft steel and an inner layer of hard or cutting steel.

During its use, the outer layers of soft steel wear faster than the inner layer of hard steel, thereby providing at all times a thin, sharp, cutting edge.

The Steel Edge Plain Back Shovels are particularly adapted for work in clay, loam or other soft soils, and are not recommended for use in handling hard materials, such as stone, gravel, concrete, etc

The manufacture of Steel Edge Shovels requires the most skilful workmanship—each tool is carefully inspected so that it will deliver that high measure of service for which it is noted.

Standard Square and Round Point Steel Edge Plain Back Shovels are manufactured in the OLIVER AMES, High (Porter) and Common (Adams) Grades, for descriptions of which see pages 6, 10 and 14, respectively.

The following sizes and types, equipped with AMES Split Dee Handles, I-D-L Dee Handles, Sturd-E Dee Handles, Wood Dee Handles and Regular 4½ foot Long Handles are regularly carried in stock. For descriptions and illustrations of handles, see pages 70 and 71.

Nominal Size	LIST NUMBERS	
	Square Point	Round Point
1	61 S	61 R
2	62 S	62 R
3	63 S	63 R
4	64 S	64 R
6	66 S	66 R

For Method of Ordering by List Number and Handle Symbols, see page 74.
For Method of Measuring Blade Dimensions and Lifts, see pages 72 and 73.

BLACK SHOVELS COST LESS AND WEAR LONGER

STEEL EDGE PLAIN BACK SHOVELS
STANDARD SQUARE AND ROUND POINT BLADES



See facing page for descriptions, sizes, grades, etc.

MOULDER SHOVELS

Moulder Shovels are manufactured in the Welded Plain Back and the Solid Shank types of construction and are furnished in size 2, equipped with AMES Split Dee Handles, I-D-L Dee Handles, Sturd-E Dee Handles, Wood Dee Handles and Malleable Peening Dee Handles. For descriptions and illustrations of handles, see pages 70 and 71.

Moulder Shovels are generally furnished with blades fully polished, front and back, enabling the user to cut and handle the sand with greatest ease. Moulder Shovels are designed to give the proper lift and balance so necessary in this class of tool.

The Welded Plain Back Moulder Shovels are manufactured by the same process as used in the construction of Standard Square and Round Point Welded Plain Back Shovels, for description of which see page 16. Moulder Shovels of this type of construction are manufactured in five grades, viz., the OLIVER AMES, Extra, High, Intermediate and Common Grades, for descriptions of which see pages 6, 8, 10, 12 and 14, respectively.

Nominal Size	List Number
2	72

The Solid Shank Moulder Shovels are manufactured in the Solid Socket and Split Socket types, by the same process as used in the construction of Standard Square and Round Point Solid Shank Shovels, for description of which see page 18.

The Solid or Closed Socket type is manufactured in three grades, viz., the OLIVER AMES, Extra and High Grades, for descriptions of which see pages 6, 8 and 10, respectively.

The Split Socket or Open Back type is manufactured in two grades, viz., the Intermediate and Common Grades, for descriptions of which see pages 12 and 14, respectively.

Nominal Size	List Number
2	82

For Method of Ordering by List Numbers and Handle Symbols, see page 74.
For Method of Measuring Blade Dimensions and Lifts, see pages 72 and 73.

BLACK SHOVELS COST LESS AND WEAR LONGER

MOULDER SHOVELS



See facing page for descriptions, sizes, grades, etc.

AUTOMOBILE, BOYS', LIME AND DITCHING SHOVELS

AUTOMOBILE SHOVELS

Automobile Shovels are manufactured in the Solid Socket type of construction and under the OLIVER AMES, Extra and High Grades, for descriptions of which see pages 18, 6, 8 and 10, respectively.

Automobile Shovels are equipped with detachable Dee Handles, either Miniature Wood Dee or Pressed Steel Dee with wood grip, which, when detached, fit into a 16" tool box.

Shovels of this type are highly desirable on touring and camping trips and for removing snow and ice in winter driving, and prove their value in the first emergency.

Nominal Size	List Number
2	92

BOYS' SHOVELS

Boys' or Ladies' Shovels are manufactured in the Square Point Pattern in the Riveted Back type of construction, and in the Round Point Pattern in the Welded Plain Back type of construction, both of which are made under the OLIVER AMES and Extra Grades, for descriptions of which see pages 22, 16, 6 and 8, respectively.

Boys' Shovels are fitted with Miniature Wood Dee Handles, making convenient, light-weight tools for yard and garden use.

LIST NUMBERS

Nominal Size	Square Point	Round Point
2	102 S	102 R

LIME SHOVELS

Lime Shovels are manufactured in the Welded Plain Back type of construction and under the OLIVER AMES, Extra and Common Grades, for descriptions of which see pages 16, 6, 8 and 14, respectively.

Lime Shovels are fitted with Regular 4½ foot Long Handles and are specially designed for use in the handling of this material.

Nominal Size	List Number
2	122

ROUND POINT DITCHING OR SPADING SHOVELS

Round Point Ditching or Spading Shovels are manufactured in the Welded Plain Back type of construction and under the Common Grade, for descriptions of which see pages 16 and 14, respectively.

Shovels of this type are equipped with Regular 4½ foot Long Handles and make desirable tools for general farm and ditch work.

Nominal Size	List Numbers
1	111
2	112

For Method of Ordering by List Numbers and Handle Symbols, see page 74.
For Method of Measuring Blade Dimensions and Lifts, see pages 72 and 73.

BLACK SPADES COST LESS AND WEAR LONGER

AUTOMOBILE, BOYS', LIME, AND DITCHING OR SPADING SHOVELS



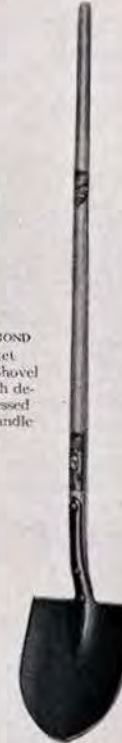
BLACK DIAMOND
Solid Socket
Automobile Shovel
equipped with detachable
Pressed Steel Dee Handle
G - 92



ST. LOUIS
Square Point
Riveted Back Boys'
or Ladies' Shovel
equipped with Miniature
Wood Dee Handle
F - 102 S



OLIVER AMES
Round Point
Plain Back Boys'
or Ladies' Shovel
equipped with Miniature
Wood Dee Handle
P - 102 R



PEERLESS
No. 2 Round Point
Welded Plain Back
Long Handle
Ditching or Spading
Shovel
L - 112



DREDNOT
Welded Plain
Back Long Handle
Lime Shovel
L - 122

See facing page for descriptions, sizes, grades, etc.

**MINING SHOVELS, BRICK OR SEWER SHOVELS
AND CONCRETE SHOVELS**

MINING SHOVELS

Mining Shovels are manufactured in the Welded Plain Back and Riveted Back types of construction, in the Stiff Point, Half Spring Point and Full Spring Point Patterns and under the OLIVER AMES, Extra, High and Intermediate Grades. For the description of the Welded Plain Back type of construction, see page 16, and for the description of the Riveted Back type of construction, see page 22. Descriptions of the grades can be found on pages 6, 8, 10 and 12, respectively.

Mining Shovels of the types and patterns noted above, equipped with Regular 4½ foot Long Handles are regularly carried in stock. Various types of Dee Handles can be furnished on order, for descriptions and illustrations of which see pages 70 and 71.

With the number of grades, different types of construction and various patterns, a wide selection of Mining Shovels is offered for use in various kinds of soil and rock.

LIST NUMBERS	WELDED PLAIN BACK TYPE		
	Nominal Size	Stiff Point	Half Spring Point
	2	132	142
			152
		RIVETED BACK TYPE	
	2	162	172
			182

BRICK OR SEWER SHOVELS

Brick or Sewer Shovels are manufactured in size 2 in the Welded Plain Back, Steel Edge Plain Back and Solid Shank types of construction—see pages 16, 26 and 18, respectively. The Welded Plain Back type is manufactured in the OLIVER AMES, Extra, High, Intermediate and Common Grades; the Steel Edge Plain Back type is manufactured in the OLIVER AMES Grade; and the Solid Shank type is manufactured in the Extra, High and Intermediate Grades, for descriptions of which see pages 6, 8, 10, 12 and 14, respectively.

Brick or Sewer Shovels are built of extra strength, for use in brick yards and in sewer and tunnel construction, and regularly fitted with Dee Handles, for descriptions and illustrations of which see pages 70 and 71.

Nominal Size	WELDED PLAIN BACK	STEEL EDGE PLAIN BACK	SOLID SHANK
	List Number	List Number	List Number
2	192	202	202 B

CONCRETE SHOVELS

Concrete Shovels are manufactured in the One Piece Plain Back type of construction, under the High Grade; and in the Hollow Back type of construction, under the Extra and High Grades, for descriptions of which see pages 20, 10, 24 and 8, respectively.

Concrete Shovels are stoutly constructed and especially designed for this class of work and are regularly fitted with Dee Handles, for descriptions and illustrations of which see pages 70 and 71.

ONE PIECE PLAIN BACK TYPE		HOLLOW BACK TYPE	
Nominal Size	List Number	Nominal Size	List Number
2	212	2	212 C
		3	213 C
		4	214 C
		6	216 C

For Method of Ordering by List Numbers and Handle Symbols, see page 74.
For Method of Measuring Blade Dimensions and Lifts, see pages 72 and 73.

BLACK SHOVELS COST LESS AND WEAR LONGER

MINING, BRICK OR SEWER AND CONCRETE SHOVELS



FLINT EDGE
Welded Plain Back
Brick or Sewer Shovel
equipped with
I-D-L Dee Handle
B - 192

MYERS
One Piece Plain Back
Concrete Shovel
equipped with Sturd-E
Dee Handle
C - 212

OLIVER AMES
Steel Edge Plain Back
Brick or Sewer Shovel
equipped with Ames
Split Dee Handle
A - 202
(Large Reproduction)

DREDNOT
Welded Plain Back
Half Spring Point
Long Handle
Mining Shovel
L - 142

ST. LOUIS
Riveted Back
Full Spring Point
Long Handle
Mining Shovel
L - 182

See facing page for descriptions, sizes, grades, etc.

IRRIGATING SHOVELS AND CUT POINT PERFORATED RICE SHOVELS

IRRIGATING SHOVELS

Irrigating Shovels are manufactured in the Welded Plain Back and Solid Shank types of construction, for descriptions of which see pages 16 and 18, respectively.

Irrigating Shovels are furnished plain or on special order with patent or turned steps and are equipped with Regular 4½ foot Long Handles. The Welded Plain Back Irrigating Shovels are manufactured in five grades, viz., OLIVER AMES, Extra, High, Intermediate and Common Grades, for descriptions of which see pages 6, 8, 10, 12 and 14, respectively.

Solid Shank Irrigating Shovels are furnished in the Solid or Closed Socket type and the Split or Open Back type.

The Solid Socket type is manufactured in four grades, viz., the OLIVER AMES, Extra, High and Intermediate Grades, and the Split Socket type in two grades, viz., the Intermediate and Common Grades, for descriptions of which see pages 6, 8, 10, 12 and 14, respectively.

Nominal Size	WELDED PLAIN BACK TYPE		SOLID SHANK TYPE
	List Number	List Number	List Number
1	—	—	231
2	222	—	232

IRRIGATING OR RICE SHOVELS CUT POINT AND PERFORATED

Cut Point Perforated Irrigating or Rice Shovels are manufactured in the Solid Shank type of construction, in both the Solid Socket type and the Split Socket type.

The Solid Socket type is furnished in three grades, viz., the OLIVER AMES, Extra and High Grades, and the Split Socket type is furnished in two grades, viz., the Intermediate and Common Grades, for descriptions of which see pages 6, 8, 10, 12 and 14, respectively.

Cut Point Irrigating or Rice Shovels are fitted with Regular 4½ foot Long Handles and are in popular demand in the rice fields.

Nominal Size	List Number
2	242

For Method of Ordering by List Numbers and Handle Symbols, see page 74.
For Method of Measuring Blade Dimensions and Lifts, see pages 72 and 73

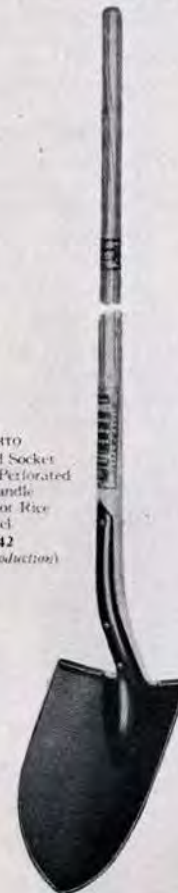
BLACK SHOVELS COST LESS AND WEAR LONGER

IRRIGATING SHOVELS AND RICE SHOVELS

OLIVER AMES
No. 2 Welded Plain Back
Long Handle Irrigating
Shovel with Turned
Steps
L - 222
(Large Reproduction)



WRIGHT
No. 2 Solid Socket
Cut Point—Perforated
Long Handle
Irrigating or Rice
Shovel
L - 242
(Large Reproduction)



BLACK DIAMOND
No. 2 Solid Socket
Long Handle
Irrigating Shovel
L - 232
(Large Reproduction)



See facing page for descriptions, sizes, grades etc

RAILROAD OR TRACK SHOVELS

Railroad or Track Shovels are manufactured in the Welded Plain Back, Solid Shank and Riveted Back types of construction, for descriptions of which see pages 16, 18 and 22, respectively.

Track Shovels are manufactured in several different popular shapes and are designed and constructed to permit tamping and handling of ties and ballast with the greatest efficiency.

Special care is given to the production of these tools—the shape of the blades and the lift and balance are the results of years of experience.

Railroad or Track Shovels of the types noted above are furnished with AMES Split Dee Handles, I-D-L Dee Handles, Sturd-E Dee Handles and Malleable Tamping Dee Handles, for illustrations and descriptions of which see pages 70 and 71.

WELDED PLAIN BACK TYPE

Welded Plain Back Track Shovels are manufactured in four grades, viz., the OLIVER AMES, Extra, High and Intermediate Grades, for descriptions of which see pages 6, 8, 10 and 12, respectively. The method of construction is the same as described on page 16 for Standard Square Point Welded Plain Back Shovels except as to shape, lift, etc.

Nominal Size	List Number
2	252

SOLID SHANK TYPE

Solid Shank Track Shovels are manufactured in the Solid or Closed Socket type and the Split Socket or Open Back type—see page 18.

The Solid Socket Type is made in the Plain and Two Strap Patterns, and in the OLIVER AMES, Extra and High Grades, for descriptions of which see pages 6, 8 and 10, respectively.

Where the greatest strength is desired, the Two Strap Solid Socket Track Shovel is highly recommended. The extra length straps extending above the top of the socket provide added strength to the handle and yet allow the strain, due to prying, to be distributed over a greater surface, all to the elimination of handle breakage. An added feature of the Solid Socket type is the ease with which handles can be replaced—a very important advantage in track work.

The Split Socket type is made in the Intermediate Grade, for description of which see page 12.

	LIST NUMBERS	
Nominal Size	Reg. Sockets	Two Strap Socket
2	262	272

RIVETED BACK TYPE

Riveted Back Track Shovels are manufactured in the Sunken Back type and in the OLIVER AMES, Extra, High and Intermediate Grades, for descriptions of which see pages 6, 8, 10 and 12, respectively.

Nominal Size	List Number
2	282

For Method of Ordering by List Numbers and Handle Symbols, see page 74.
For Method of Measuring Blade Dimensions and Lifts, see pages 72 and 73

BLACK SHOVELS COST LESS AND WEAR LONGER

RAILROAD OR TRACK SHOVELS



See facing page for descriptions, sizes, grades, etc.

ORE SHOVELS AND BAKER SHOVELS

ORE SHOVELS

Square Point Ore Shovels are manufactured in the Hollow Back type of construction (see page 24 for description), in the sizes listed below and in five grades, viz., OLIVER AMES, Extra, High, Intermediate and Common Grades, all as described on pages 6, 8, 10, 12 and 14, respectively.

Ore Shovels are furnished in the Plain, Corrugated and Tricor patterns and are equipped with AMES Split Dee Handles, I-D-L Dee Handles, Sturd-E Dee Handles and Wood Dee Handles, as described and illustrated on pages 70 and 71.

Special attention is given to the design, construction, lift and balance of Ore Shovels to assure maximum efficiency in their use.

Nominal Size	LIST NUMBERS		
	Plain	Corrugated	Tricor
2	292	302	312
3	293	303	313
4	294	304	314
6	296	306	316

BAKER SHOVELS

Baker Shovels are manufactured in the Riveted Back type of construction (see page 24 for description), in sizes 4 and 5 and in the Common Grade only, for description of which see page 14.

Baker Shovels are supplied with 9' front and back straps and are equipped with 7 foot, 8 foot, 9 foot or 10 foot Long Handles.

Nominal Size	List Number
4	324
5	325

For Method of Ordering by List Numbers and Handle Symbols, see page 74.

For Method of Measuring Blade Dimensions and Lifts, see pages 72 and 73.

BLACK SHOVELS COST LESS AND WEAR LONGER

ORE SHOVELS AND BAKER SHOVELS



ST. LOUIS
No. 2 Hollow Back
Ore Shovel equipped
with I-D-L Dee Handle
B - 292

DREDNOT
No. 2 Hollow Back
Tricor Pattern Ore
Shovel equipped with
Sturd-E Dee Handle
C - 312

OLIVER AMES
No. 2 Hollow Back
Corrugated Pattern
Ore Shovel equipped
with Ames Split Dee
Handle
A - 302

GOLD RIBBON
No. 4 Riveted Back
Baker Shovel
equipped with 9' Straps
and 7 ft. Long Handle
7 S - 324

MASSACHUSETTS
No. 4 Riveted Back
Baker Shovel
equipped with 9' Straps
and 7 ft. Long Handle
7 S - 324

See facing page for descriptions, sizes, grades, etc.

SNOW SHOVELS

RIVETED BACK PATTERN (OLD STYLE)

Riveted Back Snow Shovels are manufactured in the OLIVER AMES Grade only and in the Long Handle and Dee Handle types, and are the finest snow shovels produced.

The Riveted Back Snow Shovel is more than a Snow Shovel, being used largely as a general purpose or barn shovel.

The Long Handles have flat sides, a feature which prevents slipping and turning when in use.

The Dee Handles are extra long and are fitted with an attractive and serviceable pressed steel head with wood grip.

Nominal Size	LIST NUMBERS	
	Long Handle	Dee Handle
2	M-332	G-332

HOLLOW BACK PATTERN

The Hollow Back Snow or Barn Shovels are manufactured in the OLIVER AMES and Common Grades.

This type of snow shovel is manufactured in the same manner as Standard Square Point Hollow Back Shovels, as described on page 24, and should not be classified with the light, common type snow shovels sold for temporary use.

The Long Handles are of regular length and the Dee Handles of extra length, equipped with pressed steel heads with wood grips.

Nominal Size	LIST NUMBERS	
	Long Handle	Dee Handle
2	L-342	G-342

For Method of Ordering by List Numbers and Handle Symbols, see page 74.
 For Method of Measuring Blade Dimensions and Lifts, see pages 72 and 73.

BLACK SHOVELS COST LESS AND WEAR LONGER

SNOW SHOVELS



GOLD RIBBON
 Hollow Back Snow Shovel equipped with Pressed Steel Dee Handle
G - 342

PEERLESS
 Hollow Back Snow Shovel equipped with Pressed Steel Dee Handle
G - 342

OLIVER AMES
 Riveted Back (Old Style) Snow Shovel equipped with Pressed Steel Dee Handle
G - 332
(Large Reproduction)

OLIVER AMES
 Riveted Back (Old Style) Snow Shovel equipped with Flat Sided Long Handle
M - 332
(Large Reproduction)

FALLS CITY
 Hollow Back Long Handle Snow Shovel
L - 342

See facing page for descriptions, sizes, grades, etc.

LIGHT WEIGHT SQUARE AND ROUND POINT SHOVELS AND SOD PIT SHOVELS

LIGHT WEIGHT SQUARE AND ROUND POINT SHOVELS

For those who require light weight shovels, weighing approximately 50 lbs. per dozen, special patterns have been constructed having light gauge steel blades, so shaped and treated to give excellent service.

Light Weight Shovels are manufactured in the Welded Plain Back (with narrow straps) and the Solid Shank types of construction and are made in the same manner as the processes described on pages 16 and 18 respectively. Shovels of this type are manufactured in the Square and Round Point Patterns and in the High, Intermediate and Common Grades, all as described on pages 10, 12 and 14, respectively.

The following sizes and types, equipped with AMES Split Dee Handles, I-D-L Dee Handles, Sturd-E Dee Handles, Wood Dee Handles and Knob End or Manure Fork Long Handles are regularly carried in stock. See pages 70 and 71.

LIST NUMBERS		
WELDED PLAIN BACK TYPE		
Nominal Size	Square Point	Round Point
1	351 S	351 R
2	352 S	352 R
SOLID SHANK TYPE		
1	361 S	361 R
2	362 S	362 R

SOD PIT SHOVELS

Sod Pit Shovels are manufactured in the Welded Plain Back type of construction (see page 16), in the sizes listed below and in the OLIVER AMES, Extra and High Grades—see pages 6, 8 and 10, respectively.

Sod Pit Shovels are furnished with various types of Dee and Long Handles (see pages 70 and 71) and make very convenient tools for this class of work.

Nominal Size	List Number
2	372
3	373
4	374

For Method of Ordering by List Numbers and Handle Symbols, see page 74.
For Method of Measuring Blade Dimensions and Lifts, see pages 72 and 73.

BLACK SHOVELS COST LESS AND WEAR LONGER

LIGHT WEIGHT SQUARE AND ROUND POINT SHOVELS AND SOD PIT SHOVELS



GRIFFITH'S
No. 2 Plain Back
Sod Pit Shovel
equipped with
I-D-L Dee Handle
B - 372

BLACK DIAMOND
No. 2 Solid Socket
Round Point Light
Weight Shovel
equipped with Sturd-E
Dee Handle
C - 362 R

WRIGHTO
No. 2 Solid Socket
Square Point Light
Weight Shovel
equipped with Ames
Split Dee Handle
A - 362 S
(Large Reproduction)

HELMET
No. 2 Plain Back
Light Weight
Knob End
Long Handle
Round Point
Shovel
N - 352 R

PEERLESS
No. 2 Solid Shank
Light Weight
Knob End
Long Handle
Round Point
Shovel
N - 362 R

See facing page for descriptions, sizes, grades, etc.

TELEGRAPH SPOONS AND SHOVELS

TELEGRAPH SPOONS

Telegraph Spoons are manufactured in the Welded Plain Back type of construction (see page 16), in the Eastern Pattern and Western Union Pattern types, in size 2 and in the OLIVER AMES, Extra and High Grades, as described on pages 6, 8 and 10, respectively.

Telegraph Spoons are furnished with front and back straps, 9", 18" and 24" long, and with special spoon handles, 7 ft., 8 ft., 9 ft. and 10 ft. in length.

LIST NUMBERS
EASTERN PATTERN

Handle Length	9" Straps	18" Straps	24" Straps
7 ft.	7 T - 382	7 T - 392	7 T - 402
8 ft.	8 T - 382	8 T - 392	8 T - 402
9 ft.	9 T - 382	9 T - 392	9 T - 402
10 ft.	10 T - 382	10 T - 392	10 T - 402

WESTERN UNION PATTERN

7 ft.	7 T - 412	7 T - 422	7 T - 432
8 ft.	8 T - 412	8 T - 422	8 T - 432
9 ft.	9 T - 412	9 T - 422	9 T - 432
10 ft.	10 T - 412	10 T - 422	10 T - 432

TELEGRAPH SHOVELS

Telegraph Shovels are manufactured in the Welded Plain Back type of construction (see page 16), in size 2 and in the OLIVER AMES, Extra and High Grades, all as described on pages 6, 8 and 10, respectively. Telegraph Shovels are furnished with front and back straps, 9", 18" and 24" long, and with handles, 7 ft., 8 ft., 9 ft. and 10 ft. in length. When so ordered and at special prices, Telegraph Shovels can be furnished with straight spoon handles of lengths noted above and without bend or lift.

LIST NUMBERS

Handle Length	9" Straps	18" Straps	24" Straps
7 ft.	7 S - 442	7 S - 452	7 S - 462
8 ft.	8 S - 442	8 S - 452	8 S - 462
9 ft.	9 S - 442	9 S - 452	9 S - 462
10 ft.	10 S - 442	10 S - 452	10 S - 462

For Method of Ordering by List Numbers and Handle Symbols, see page 74.
For Method of Measuring Blade Dimensions and Lifts, see pages 72 and 73.

BLACK SHOVELS COST LESS AND WEAR LONGER

TELEGRAPH SPOONS AND SHOVELS

OLIVER AMES
Welded Plain Back
Eastern Pattern Tele-
graph Spoon with 8 ft.
Long Handle and
24" Straps
8 T - 402



DREDNOT
Welded Plain Back
Western Union Pat-
tern Telegraph Spoon
with 8 ft. Long Han-
dle and 18" Straps
8 T - 422

FLINT-EDGE
Welded Plain Back
Telegraph Shovel
with 8 ft. Bent Long
Handle and 9" Straps
8 S - 442

See facing page for descriptions, sizes, grades, etc.

COAL SHOVELS

Coal Shovels are manufactured in the Hollow Back type of construction with the same process as used in the construction of Standard Square and Round Point Hollow Back Shovels as described on page 24.

Hollow Back Coal Shovels are furnished in sizes 1, 2 and 3, and in five grades, viz., the OLIVER AMES, Extra, High, Intermediate and Common Grades, all as described on pages 6, 8, 10, 12 and 14, respectively

Coal Shovels are manufactured in the plain, corrugated and Tricor (patented) patterns and in the Regular Socket or Small, Light Weight Socket types. The Corrugated and Tricor patterns are particularly in demand and the Small Socket Light Weight pattern is popular in some sections.

In designing the Coal Shovel patterns, special attention was given to the shape of the blade, the efficient arrangement of the corrugations, the size and shape of the socket, the hang or balance — and particularly to the weight of the finished product — all for the delivery of shovels most desired by the Coal Miners.

The following sizes and types equipped with AMES Split Dee Handles, Sturd-E Dee Handles, I-D-L Dee Handles, Wood Dee Handles and Regular 4½ foot Long Handles are regularly carried in stock.

For descriptions and illustrations of handles, see pages 70 and 71.

LIST NUMBERS

Nominal Size	REGULAR SOCKET			SMALL SOCKET		
	Plain	Corrugated	Tricor	Plain	Corrugated	Tricor
1	471	481	491	501	511	521
2	472	482	492	502	512	522
3	473	483	493	503	513	523
4	474	484	494	504	514	524

For Method of Ordering by List Numbers and Handle Symbols, see page 74.

For Method of Measuring Blade Dimensions and Lifts, see pages 73 and 74.

BLACK SHOVELS COST LESS AND WEAR LONGER

COAL SHOVELS



FLINT EDGE
No. 2 Hollow Back
Coal Shovel equipped
with I-D-L Dee Handle
B - 472

DREDNOT
No. 2 Hollow Back
Tricor Pattern Coal
Shovel equipped with
Sturd-E Dee Handle
C - 492

THOR
No. 2 Hollow Back
Long Handle
Coal Shovel
L - 472

OLIVER AMES
No. 2 Hollow Back Corrugated Pattern Coal Shovel equipped with Ames Split Dee Handle
A - 482
(Large Reproduction)

ST. LOUIS
No. 2 Hollow Back Corrugated Pattern Long Handle Coal Shovel
L - 482

See facing page for descriptions, sizes, grades, etc.

STANDARD PATTERN SPADES (GARDEN)

Standard Pattern or Garden Spades are manufactured in size 2 and in the following types of construction, all as described under Standard Square and Round Point Shovels on the pages noted after each type:

- Welded Plain Back See page 16
- Steel Edge Plain Back See page 26
- Solid Shank See page 18
- One Piece Plain Back See page 20

All Standard Pattern Spades of the types listed above are equipped with patented steps securely fastened to the blades and are furnished with AMES Split Dee Handles, I-D-L Dee Handles, Sturd-E Dee Handles, Wood Dee Handles and Regular 4½ foot Long Handles, for descriptions and illustrations of which see pages 70 and 71.

The Welded Plain Back type is manufactured in the OLIVER AMES, Extra, High, Intermediate and Common Grades, all as described on pages 6, 8, 10, 12 and 14, respectively.

The Steel Edge Plain Back Spades are furnished in the OLIVER AMES, High and Common Grades, for descriptions of which see pages 6, 8 and 14, respectively. The Steel Edge type of construction is particularly adapted to spades, permitting a sharp cutting edge at all times.

The Solid Shank Spades are made in both the Solid or Closed Socket and the Split or Open Back Socket types — the Solid Socket type being furnished in the OLIVER AMES, Extra and High Grades, and the Split Socket type in the Intermediate and Common Grades, for descriptions of which see pages 6, 8, 10, 12 and 14, respectively.

The One Piece Plain Back Spades are manufactured in the High, Intermediate and Common Grades—see pages 10, 12 and 14, respectively

Nominal Size	Type	List Numbers
2	Welded Plain Back	602
2	Steel Edge Plain Back	632
2	Solid Shank	612
2	One Piece Plain Back	622

For Method of Ordering by List Numbers and Handle Symbols, see page 74.
 For Method of Measuring Blade Dimensions and Lifts, see pages 72 and 73.

BLACK SPADES COST LESS AND WEAR LONGER

STANDARD PATTERN SPADES (GARDEN)



BLACK DIAMOND
 No. 2 Solid Socket
 Solid Shank Spade
 equipped with Wood
 Dee Handle
 D - 612

DREHNOT
 No. 2 Plain Back
 Spade equipped
 with I-D-L Dee Handle
 B - 602

OLIVER AMES
 No. 2 Steel Edge
 Plain Back Spade
 equipped with Ames
 Split Dee Handle
 A - 632
 (Large Reproduction)

MVERS
 No. 2 One Piece
 Plain Back Long
 Handle Spade
 L - 622

FLINT EDGE
 No. 2 Plain Back
 Long Handle
 Spade
 L - 602

See facing page for descriptions, sizes, grades, etc.

DRAINAGE TOOLS

DITCH, DRAIN AND POST OR CONCAVE SPADES

Ditch Spades, Drain Spades and Post or Concave Spades are manufactured in the Welded Plain Back and Solid Shank types of construction by the same processes as described under Standard Square and Round Point Shovels on pages 16 and 18, respectively.

Welded Plain Back Ditch Spades, Drain Spades and Post Spades are furnished in the OLIVER AMES, Extra, High and Intermediate Grades, for descriptions of which see pages 6, 8, 10 and 12, respectively.

Solid Shank Ditch Spades, Drain Spades and Post Spades are manufactured in the Solid or Closed Socket type and the Split or Open Back Socket type—the Solid Socket type being furnished in the OLIVER AMES, Extra and High Grades and the Split Socket type in the Intermediate Grade, all as described on pages 6, 8, 10 and 12, respectively.

The following sizes (blade lengths) and types equipped with AMES Split Dee Handles, I-D-L Dee Handles, Sturd-E Dee Handles and Wood Dee Handles are regularly carried in stock. For descriptions and illustrations of handles, see pages 70 and 71.

LIST NUMBERS			
WELDED PLAIN BACK TYPE			
Nominal Size (Length)	Ditch Spades	Drain Spades	Post Spades
14"	644	654	664
16"	646	656	666
18"	648	658	668
20"	640	650	660
SOLID SHANK TYPE			
14"	674	684	694
16"	676	686	696
18"	678	688	698

For Method of Ordering by List Numbers and Handle Symbols, see page 74.
 For Method of Measuring Blade Dimensions and Lifts, see pages 72 and 73.

BLACK SPADES COST LESS AND WEAR LONGER

**DRAINAGE TOOLS
 DITCH, DRAIN AND POST OR CONCAVE SPADES**



See facing page for descriptions, sizes, grades, etc.

AMES SHOVEL AND TOOL COMPANY

BOYS' SPADES, CONCRETE SPADES, DIAMOND POINT OR WATERLAND SPADES AND IOWA PATTERN SPADES

BOYS' SPADES

Boys' or Ladies' Spades are manufactured in the Riveted Back type of construction (see page 22), in size 2 and in the OLIVER AMES and Extra Grades.

Boys' Spades are fitted with Miniature Wood Dee Handles and make excellent tools for light garden work.

Nominal Size	List Number
2	702

CONCRETE SPADES

Perforated Concrete Spades are manufactured in the Welded Plain Back type of construction (see page 16), in sizes 2 and 4 and in the OLIVER AMES, Extra and High Grades, for descriptions of which see pages 6, 8 and 10, respectively.

Concrete Spades are furnished with AMES Split Dee Handles, I-D-L Dee Handles, Sturd-E Dee Handles, Wood Dee Handles and Regular 4½ foot Long Handles, for descriptions and illustrations of which, see pages 70 and 71.

Nominal Size	List Numbers
2	712
4	714

DIAMOND POINT OR WATERLAND SPADES

Diamond Point or Waterland Spades are manufactured in the Welded Plain Back and Solid Shank types of construction (see pages 16 and 18), in size 2 and in the OLIVER AMES, Extra, High and Intermediate Grades (see pages 6, 8, 10 and 12, respectively)

	LIST NUMBERS	
Nominal Size	WELDED PLAIN BACK TYPE	SOLID SHANK TYPE
2	722	722 V

IOWA PATTERN SPADES

Iowa Pattern Spades are manufactured in the Welded Plain Back and Solid Shank types of construction, for descriptions of which see pages 16 and 18, respectively.

Iowa Pattern Spades, in both types of construction, are furnished in the OLIVER AMES, Extra, High and Intermediate Grades—see pages 6, 8, 10 and 12.

Iowa Pattern Spades are fitted with extra length AMES Split Dee Handles, I-D-L Dee Handles, Sturd-E Dee Handles and Regular Wood Dee Handles—see pages 70 and 71.

	LIST NUMBERS	
Nominal Size	WELDED PLAIN BACK TYPE	SOLID SOCKET TYPE
2	732	742

For Method of Ordering by List Numbers and Handle Symbols, see page 74
For Method of Measuring Blade Dimensions and Lifts, see pages 72 and 73.

BLACK SPADES COST LESS AND WEAR LONGER

AMES SHOVEL AND TOOL COMPANY

BOYS', CONCRETE, DIAMOND POINT OR WATERLAND AND IOWA PATTERN SPADES



See facing page for descriptions, sizes, grades, etc.

GRAFTING SPADES AND NURSERY SPADES

GRAFTING SPADES

Grafting Spades are manufactured in the Welded Plain Back and Solid Shank types of construction under the processes as described on pages 16 and 18, respectively, for Standard Square and Round Point Shovels.

Grafting Spades are furnished in size 3 in the Narrow Point and Wide Point patterns. The Welded Plain Back type is manufactured under the OLIVER AMES, Extra, High and Intermediate Grades, for descriptions of which see pages 6, 8, 10 and 12, respectively. The Solid Shank type is manufactured in both the Solid Socket or Closed type and the Split Socket or Open type; the Solid Socket type being manufactured in the OLIVER AMES, Extra and High Grades, and the Split Socket type being manufactured in the Intermediate and Common Grades, for descriptions of which see pages 6, 8, 10, 12 and 14, respectively.

Grafting Spades are fitted with AMES Split Dee Handles, I-D-L Dee Handles, Sturd-E Dee Handles and Regular Wood Dee Handles, for descriptions and illustrations of which see pages 70 and 71.

**LIST NUMBERS
WELDED PLAIN BACK TYPE**

Nominal Size	Narrow Point	Wide Point
3	753	763

SOLID SHANK TYPE

3	773	783
---	-----	-----

NURSERY SPADES

Nursery Spades are manufactured in the Steel Edge Plain Back and Welded Plain Back types of construction, as described under Standard Square and Round Point Shovels, on pages 26 and 16, respectively. The Steel Edge Plain Back type is particularly adapted to the construction of Nursery Spades, as a sharper cutting edge is provided at all times. The Welded Plain Back type of construction is lighter in weight than the Steel Edge Plain Back type of construction, and is found to be a serviceable tool where extra heavy work is not required.

Nursery Spades are furnished in sizes 2 and 3; size 3 with tapered blade, when so ordered.

Nursery Spades are manufactured in the OLIVER AMES Grade only, as described on page 6.

Spades of this type are generally furnished with regular Wood Dee Handles to which is attached extra length front and back straps extending to the Dee of the handle. When so ordered, I-D-L Dee Handles and Sturd-E Dee Handles can be furnished.

Nominal Size	STEEL EDGE PLAIN BACK TYPE	WELDED PLAIN BACK TYPE
2	792	792 N
3	793	793 N

For Method of Ordering by List Numbers and Handle Symbols, see page 74.

For Method of Measuring Blade Dimensions and Lifts, see pages 72 and 73.

BLACK SPADES COST LESS AND WEAR LONGER

GRAFTING AND NURSERY SPADES



PORTER
Plain Back
Wide Point Grafting
Spade equipped with
I-D-L Dee Handle
B - 763

DREDNOT
Solid Socket
Narrow Point
Grafting Spade
equipped with Ames
Split Dee Handle
A - 773

OLIVER AMES
No. 3 Steel Edge
Plain Back
Tapered Nursery
Spade equipped
with Wood Dee
Handle
D - 793 - T

OLIVER AMES
No. 2 Steel Edge Plain
Back Nursery Spade
equipped with Wood
Dee Handle
D - 792
(Large Reproduction)

ST. LOUIS
Plain Back
Narrow Point
Grafting Spade
equipped with
Sturd-E Dee Handle
C - 753

See facing page for descriptions, sizes, grades, etc.

EASTERN PATTERN SCOOPS

Eastern Pattern Scoops are designed and constructed for general and universal use. The blades are formed of steel of an analysis and gauge to meet the requirements of the work to be performed and the grade under which they are sold.

Eastern Pattern Scoops are manufactured in the Hollow Back and Riveted Back types of construction, the same as described in the construction of Standard Square and Round Point Shovels on pages 24 and 22, respectively, and each type is furnished in the Regular, Jack and Round Point Patterns under the OLIVER AMES, Extra, High, Intermediate and Common Grades, for descriptions of which see pages 6, 8, 10, 12 and 14, respectively.

Eastern Pattern Riveted Back Regular Pattern Scoops in the OLIVER AMES, Extra and High Grades may be fitted with extra shoulder braces, thereby making sturdy tools of long life and especially desirable for coal yard work. For extra prices covering extra shoulder braces, refer to current price lists.

The following sizes and types, equipped with AMES Split Dee Handles, I-D-L Dee Handles, Sturd-E Dee Handles, Wood Dee Handles and Regular 4½ foot Long Handles are regularly carried in stock. For descriptions and illustrations of handles, see pages 70 and 71.

LIST NUMBERS				
HOLLOW BACK TYPE				
Nominal Size	Regular	Jack	Round Point	
2	802	812	822	
3	803	813	823	
4	804	814	824	
5	805	815	825	
6	806	816	826	
7	807	817	827	
RIVETED BACK TYPE				
Nominal Size	Regular	Jack	Round Point	
2	832	842	852	
3	833	843	853	
4	834	844	854	
5	835	845	855	
6	836	846	856	
7	837	847	857	

For Method of Ordering by List Numbers and Handle Symbols, see page 74.
 For Method of Measuring Blade Dimensions and Lifts, see pages 72 and 73.

BLACK SCOOPS COST LESS AND WEAR LONGER

EASTERN PATTERN SCOOPS



See facing page for descriptions, sizes, grades, etc.

WESTERN OR GRAIN PATTERN SCOOPS

Western or Grain Pattern Scoops are manufactured in the Hollow Back type of construction by the same process as is used in the construction of Standard Square and Round Point Hollow Back Shovels, as described on page 24.

Western Pattern Scoops are furnished in the Regular and Corrugated patterns and in the OLIVER AMES, Extra, High, Intermediate and Common Grades, as described on pages 6, 8, 10, 12 and 14, respectively.

Western Pattern Scoops are manufactured with the regular size socket and the small size socket.

The following sizes and types of Western or Grain Pattern Scoops, equipped with AMES Split Dee Handles, I-D-L Dee Handles, Sturd-E Dee Handles, Wood Dee Handles and Regular 4½ foot Long Handles are regularly carried in stock.

For descriptions and illustrations of handles, see pages 70 and 71.

Nominal Size	LIST NUMBERS		CORRUGATED PATTERN Small Socket
	REGULAR PATTERN Reg. Socket	REGULAR PATTERN Small Socket	
6	866	876	886
8	868	878	888
10	860	870	880
12	862	872	882

For Method of Ordering by List Numbers and Handle Symbols, see page 74
 For Method of Measuring Blade Dimensions and Lifts, see pages 72 and 73.

BLACK SCOOPS COST LESS AND WEAR LONGER

WESTERN OR GRAIN PATTERN SCOOPS



See facing page for descriptions, sizes, grades, etc.

SAND OR GRAVEL SCOOPS, GRAIN TRIMMER SCOOPS AND CHARGING SCOOPS

SAND OR GRAVEL SCOOPS—ROUND MOUTH PATTERN

Round Mouth Sand or Gravel Scoops are manufactured in the Hollow Back type of construction, as described on page 24, and in the OLIVER AMES, Extra, High, Intermediate and Common Grades, for descriptions of which see pages 6, 8, 10, 12 and 14, respectively.

Sand or Gravel Scoops are furnished with AMES Split Dee Handles, I-D-L Dee Handles, Sturd-E Dee Handles and Wood Dee Handles. For descriptions and illustrations of handles, see pages 70 and 71.

Nominal Size	List Number
2	892

GRAIN TRIMMER SCOOPS

Grain Trimmer Scoops are manufactured in the Riveted Back type of construction as described under Square and Round Point Shovels on page 22 and in the OLIVER AMES and High Grades—see pages 6 and 10, respectively.

Grain Trimmer Scoops are special tools, constructed of light gauge steel blades and fitted with AMES Split Dee Handles, I-D-L Dee Handles, Sturd-E Dee Handles and Wood Dee Handles. For descriptions and illustrations of handles, see pages 70 and 71.

Nominal Size	List Numbers
2	902
3	903

CHARGING SCOOPS

Charging Scoops are manufactured in the Hollow Back type of construction (see page 24), in the sizes listed below and in the OLIVER AMES, Extra and High Grades (see pages 6, 8 and 10, respectively).

Charging Scoops are furnished with various types of Dee Handles and Regular 4½ foot Long Handles, all of low lift. For descriptions and illustrations of handles, see pages 70 and 71.

Nominal Size	List Numbers
4	914
5	915

For Method of Ordering by List Numbers and Handle Symbols, see page 74.
For Method of Measuring Blade Dimensions and Lifts, see pages 72 and 73.

BLACK SCOOPS COST LESS AND WEAR LONGER

SAND OR GRAVEL, GRAIN TRIMMER AND CHARGING SCOOPS



See facing page for descriptions, sizes, grades, etc.

FURNACE SCOOPS AND OYSTER SCOOPS

FURNACE SCOOPS

Furnace Scoops are manufactured in the Hollow Back and Riveted Back types by the same processes as described under Square and Round Point Shovels on pages 24 and 22, respectively.

Furnace Scoops are furnished in one size and under the Common Grade, as described on page 14.

Hollow Back and Riveted Back Furnace Scoops are equipped with low lift Dee and Long Handles—the Dee Handle being fitted with a pressed steel top with wood grip For descriptions and illustrations of handles, see pages 70 and 71.

Special attention has been given to the design of Furnace Scoops to produce efficient tools for household use.

Nominal Size	LIST NUMBERS	
	HOLLOW BACK TYPE	RIVETED BACK TYPE
2	922	932

OYSTER SCOOPS

Oyster Scoops are manufactured in the Hollow Back type of construction, the same as used in the manufacture of Hollow Back Square and Round Point Shovels, as described on page 24.

Oyster Scoops are furnished in sizes 3, 5 and 7 and in the Intermediate Grade, as described on page 12.

Scoops of this classification are similar in shape to Eastern Pattern Hollow Back Scoops, differing however in the gauge and analysis of the steel blades and by the flattening of the point.

Oyster Scoops are generally fitted with Wood Dee Handles and can be furnished galvanized when so ordered, for cost of which see price list.

Nominal Size	List Numbers
3	943
5	945
7	947

For Method of Ordering by List Numbers and Handle Symbols, see page 74.
 For Method of Measuring Blade Dimensions and Lifts, see pages 72 and 73.

BLACK SCOOPS COST LESS AND WEAR LONGER

FURNACE SCOOPS AND OYSTER SCOOPS



HELMET
 No. 5 Hollow Back
 Oyster Scoop
 equipped with
 Wood Dee Handle
 D - 945

PEERLESS
 Hollow Back
 Furnace Scoop
 equipped with Pressed
 Steel Dee Handle
 G - 922

MASSACHUSETTS
 Riveted Back Furnace
 Scoop equipped with
 Pressed Steel Dee
 Handle
 G - 932
 (Large Reproduction)

FALLS CITY
 Hollow Back
 Long Handle
 Furnace Scoop
 L - 922

GRIFROW
 Riveted Back
 Long Handle
 Furnace Scoop
 L - 932

See facing page for descriptions, sizes, grades, etc.

ALL STEEL HANDLE SCOOPS AND ASH PAN SCOOPS

ALL STEEL HANDLE SCOOPS (APOLLO)

All Steel Handle Scoops are manufactured in the Hollow Back type of construction, as described on page 24, in the sizes listed below and in the OLIVER AMES, Extra and High Grades—see pages 6, 8 and 10

Steel Handle Scoops are pressed and shaped from single pieces of sheet steel, the blade and handle of the same piece, and are fitted with Malleable Dee Heads or Pressed Steel Dee Heads with Wood Grips.

Steel Handle Scoops are specially designed and constructed for use in handling hot materials, such as asphalt, slag, etc., in which work wood stem handles may be burnt and destroyed, and are also popular in coal yard work.

Nominal Size	List Numbers
3	953
4	954
5	955
6	956

ASH PAN SCOOPS

Ash Pan Scoops are manufactured in the Riveted Back and the Hollow Back types of construction, as described on pages 22 and 24 respectively. The Riveted Back type is furnished in the OLIVER AMES Grade and Common Grade (see pages 6 and 14), in sizes 4, 6 and 8, and equipped with Low Lift Long Handles, 6 ft., 8 ft. and 10ft. long.

The Hollow Back type is furnished in the Common Grade only (see page 14), size 4, and equipped with Low Lift Long Handles, 6 ft., 7 ft., 8 ft., 9 ft., and 10 ft. long.

Ash Pan Scoops are furnished with plain and perforated blades— for cost of perforating see price lists.

RIVETED BACK TYPE	
Nominal Size	List Numbers
4	964
6	966
8	968

HOLLOW BACK TYPE	
Nominal Size	List Number
4	974

For Method of Ordering by List Numbers and Handle Symbols, see page 74.
For Method of Measuring Blade Dimensions and Lifts, see pages 72 and 73

BLACK SCOOPS COST LESS AND WEAR LONGER

ALL STEEL HANDLE SCOOPS AND ASH PAN SCOOPS



FLINT EDGE
No. 3 Hollow Back
All Steel Handle Scoop
equipped with
Malleable Dee Head
H - 953

APOLLO
No. 6 Hollow Back
All Steel Handle Scoop
equipped with Pressed
Steel Head with
Wood Grip
G - 956

OLIVER AMES
No. 6 Riveted Back
Ash Pan Scoop equip-
ped with 8 ft. Long
Handle
8 S - 966

GOLD RIBBON
No. 4 Hollow Back
Perforated Ash Pan
Scoop equipped with
7 ft. Long Handle
7 S - 974

See facing page for descriptions, sizes, grades, etc.

BREAKDOWN OR COALING SCOOPS

(DIAMOND POINT)

Diamond Point Breakdown or Coal Scoops are manufactured in Eastern and Western Patterns.

The Eastern Pattern Breakdown Scoops are furnished in the Hollow Back and Riveted Back types of construction, all as described on pages 24 and 22, respectively, in the sizes listed below and in the OLIVER AMES, Extra and High Grades. For description of grades, see pages 6, 8 and 10.

The Western Pattern Diamond Point Breakdown or Coaling Scoops are manufactured in the Hollow Back type of construction (see page 24), in the sizes listed below and in the OLIVER AMES, Extra and High Grades—see pages 6, 8 and 10, respectively.

Diamond Point Breakdown or Coaling Scoops, fitted with AMES Split Dee Handles, I-D-L Dee Handles, Sturd-E Dee Handles and Wood Dee Handles are regularly carried in stock. For descriptions and illustrations of handles, see pages 70 and 71.

LIST NUMBERS		
EASTERN PATTERN		
Nominal Size	Hollow Back	Riveted Back
2	982	992
3	983	993
4	984	994
5	985	995
6	986	996
7	987	997
WESTERN PATTERN		
6	1006	
8	1008	
10	1000	
12	1002	

For Method of Ordering by List Numbers and Handle Symbols, see page 74.
 For Method of Measuring Blade Dimensions and Lifts, see pages 72 and 73.

BLACK SCOOPS COST LESS AND WEAR LONGER



See facing page for descriptions, sizes, grades; etc.

SNOW AND ICE HANDLING TOOLS

SIDEWALK SCRAPERS OR CLEANERS

(For Snow Shovels see pages 40 and 41)

Sidewalk Scrapers or Cleaners are manufactured in the Riveted Back type of construction (see page 22), in sizes 2 and 4 and under the Common Grade—see page 14.

Size 2 is constructed with short length front and back straps riveted to the blade and forming a socket to which the Long Handle is riveted. Size 2 makes a desirable, inexpensive tool for intermittent service.

Size 4 is constructed with regular shovel length front and back straps securely riveted to the blade and the Long Handle, providing a sturdy tool for hard, continuous service.

Nominal Size	Blade Size	List Number
2	6¾ x 6½	1012
4	10 x 6½	1014

SNOW PUSHERS

Snow Pushers are manufactured in two sizes, having approximate blade dimensions of 9" x 18" and 9" x 24", respectively, and under the Common Grade, for description of which see page 14.

The blades are bent to a scientific contour to handle the heaviest snows and are made of a gauge sufficiently thick to prevent bending or warping.

The Long Ash Handle is fitted to the blade by means of a pressed steel socket securely connecting the blade and handle.

Nominal Size	Blade Size	List Number
18"	9" x 18"	1028
24"	9" x 24"	1024

For Method of Ordering by List Numbers and Handle Symbols, see page 74.

For Method of Measuring Blade Dimensions and Lifts, see pages 72 and 73.

BLACK SHOVELS COST LESS AND WEAR LONGER

SNOW AND ICE HANDLING TOOLS
SIDEWALK SCRAPERS OR CLEANERS



GOLD RIBBON
No. 2 Sidewalk
Scraper
L - 1012

GOLD RIBBON
24" Snow Pusher
L - 1024

FALLS CITY
No. 4 Sidewalk
Scraper
L - 1014

See facing page for descriptions, sizes, grades, etc.

HANDLES

SHOVELS SPADES SCOOPS

The Shovels, Spades and Scoops listed in this catalog are regularly equipped and stocked with the types of handles noted and illustrated in each section. The handles described below, and illustrated on the facing page, show a wide selection of types. For repair work, any type of head or design of handle can be furnished with the bend best suited for the type of shovel, spade or scoop for which they are intended. When ordering for repair work specify handle symbol, and type and pattern of tool in which they are to be used.

All handles are carefully graded and inspected at the producing mill and the receiving factory and are not used until they have been properly seasoned.

- SYMBOL A Illustrates the AMES Split Dee Handle—a light weight, strong handle allowing ample room for the hand. The grain of the grip runs lengthwise with the grip, thereby eliminating the splitting of the grip so prevalent in older types. The handle is assembled and the grip held in position by an off center rivet running through the grip and reinforced by specially constructed steel side clips.
- SYMBOL B Illustrates the I-D-L Steel Top Dee Handle manufactured and guaranteed by the American Fork and Hoe Co.
- SYMBOL C Illustrates the Sturd-E Steel Top Dee Handle manufactured and guaranteed by the Columbus Handle & Tool Co.
- SYMBOL D Illustrates the old type Wood Dee Handle in use for many years but rapidly being replaced by the later and more efficient designs.
- SYMBOL E Illustrates the Malleable Peening Dee Handle.
- SYMBOL F Illustrates the Miniature Wood Dee Handle.
- SYMBOL G Illustrates the Pressed Steel Dee Handle with Wood Grip.
- SYMBOL H Illustrates the Malleable Tamping Dee Handle.
- SYMBOL L Signifies the Regular 4½ foot Long Handle.
- SYMBOL S Signifies the Telegraph Shovel Handle.
- SYMBOL T Signifies the Telegraph Spoon Handle.
- SYMBOL M Signifies the Flat Sided 4½ foot Long Handle.
- SYMBOL N Signifies the Knob End or Manure Fork Handle.

For Method of Ordering by List Numbers and Handle Symbols, see page 74.
 For Method of Measuring Blade Dimensions and Lifts, see pages 72 and 73.

BLACK SHOVELS COST LESS AND WEAR LONGER

HANDLES
 SHOVELS SPADES SCOOPS



See facing page for descriptions

METHOD OF MEASURING SHOVELS, SPADES AND SCOOPS

The Shovels, Spades and Scoops listed in this catalogue have been designed and constructed to meet the requirements of the users for the various kinds of work to be performed.

There are some sections of the country which require blade contours and shapes and blade lifts slightly different than other sections, so while the various types of a certain Nominal Size are generally formed from the same size of sheets, the difference in contours necessarily varies the finished dimensions.

In order to avoid confusion and possible misunderstandings, it was deemed advisable to eliminate from this catalogue specific data pertaining to dimensions. Our various plants will be pleased to furnish information of this kind on request.

By reference to the illustrations on the facing page, you will note the usual practice employed in measuring the blade, the lift and the handle length.

Special lifts and special handle lengths can be furnished on order, for prices of which refer to price lists.

Great good has been accomplished by the Committee on Standardization and Simplification in the Shovel Industry, working with the Division of Simplified Practice, Washington, D. C., and as time progresses the number of sizes, types, patterns and grades will be reduced and simplified all to the advantage of the Distributors, Dealers, Consumers and Manufacturers of Shovels, Spades and Scoops.

BLACK SHOVELS COST LESS AND WEAR LONGER

METHOD OF MEASURING SHOVELS, SPADES AND SCOOPS



Illustration of front view of Scoop showing dimensions of Blade Width and Length and Handle Length.

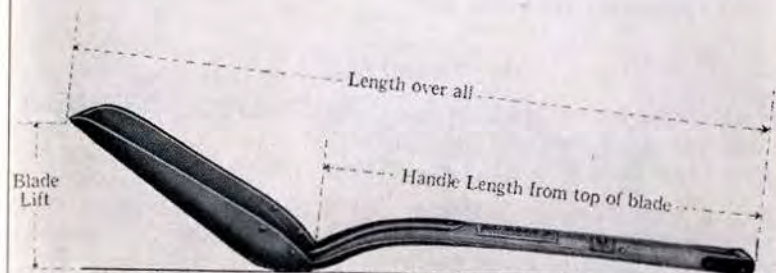


Illustration of side view of Scoop showing dimensions of Length over all, Handle Length from top of blade and Blade Lift

BLACK SHOVELS COST LESS AND WEAR LONGER

**METHOD OF ORDERING BY
LIST NUMBERS AND HANDLE SYMBOLS**

It will greatly facilitate our service to you and to a large extent eliminate errors and misunderstandings, if the following procedure is used in noting your specifications:

The List Numbers and Handle Symbols noted in this catalog are applicable to all of our Companies and supersede list numbers previously noted in the catalogues of those Companies.

First State quantities in dozens and twelfths of dozens.

Second Note Label or brand which will also designate Grade desired. See pages 6, 8, 10, 12 and 14.

Third Note Handle Symbol or letter. These Symbols are noted on pages 70 and 71, the symbols referring to types of handles, irrespective of bend or length. For extra length Long Handles (over the Regular $4\frac{1}{2}$ ft. Long Handles), prefix the length (in feet) to the Handle Symbol, *i.e.*, 10T means 10 ft. Telegraph Spoon Handle.

Fourth Note List Number of tool desired. The List Numbers are noted opposite the sizes and types in the sections devoted to the descriptions of the tools. See index, on pages 75 to 78, inclusive.

Fifth Designate special finish, such as half polish, full polish, galvanized, etc. Unless otherwise specified, Black or Natural finish will be supplied. Extra finishes require extra time and cost more, and when polished reduce the life of the tool.

Sixth Designate special construction (if wanted), such as extra shoulder braces, perforated blades, turned steps, etc.

EXAMPLES

**If you want 10 dozen Oliver Ames size 2 Plain Back Round Point Shovels with Ames Split Dee Handles,
Your order should read: 10 dozen Oliver Ames A - 12 R;**

**If you want 5 dozen Sycamore size 2 Solid Shank Square Point Polished Shovels with Regular $4\frac{1}{2}$ ft. Long Handles,
Your order should read: 5 dozen Sycamore L - 22 S Polished;**

**If you want 15 only, Drednot Plain Back Eastern Pattern Telegraph Spoons with 18" straps and 10 ft. handles,
Your order should read: 1 $\frac{3}{12}$ dozen Drednot 10T - 392.**

BLACK SHOVELS COST LESS AND WEAR LONGER

INDEX

A	PAGE	C (Cont'd)	PAGE
Adams Brand.....	14-26	Charging Scoops.....	60-61
All Steel Handle Scoops.....	64-65	Cheltenham Brand.....	10-11
Ames Brand.....	6-7	Cleveland Brand.....	14
Ames Split Dee Handles.....	70-71	Climax Brand.....	14
Anderson Brand.....	14-15	Coal Shovels.....	46-47
Antrim Type (see Plain Back)....	16-17	Coaling Scoops.....	66-67
Apollo Brand.....	10-11	Coal Yard Scoops (see Eastern Pattern Scoops).....	56-57
Apollo Scoops.....	64-65	Common Grade.....	14-15
Ash Pan Scoops.....	64-65	Concave Spades (see Post Spades)	50-51
Automobile Shovels.....	30-31	Concrete Shovels.....	32-33
		Concrete Spades.....	52-53
B		Corrugated Coal Shovels.....	46-47
Back Strap Shovels, Spades & Scoops—see Riveted Back		Corrugated Grain Scoops.....	58-59
Baird Brand.....	12	Corrugated Ore Shovels.....	38-39
Baker Shovels.....	38-39	Corrugated Western Pattern Scoops.....	58-59
Barn Shovels (see Snow Shovels) .	40-41	Crane Brand.....	12
Bartlett Brand.....	10	Cut Point Irrigating or Rice Shovels.....	34-35
Baxter Brand.....	12		
Beaver Falls Brand.....	10	D	
Belmont Brand.....	14	Day Brand.....	10
Birge Brand.....	10-11	Dee Handles.....	70-71
Black Diamond Brand.....	10-11	Defiance Brand.....	8-9
Blair Brand.....	10	Delve Brand.....	12
Boardman Brand.....	12	Denim Brand.....	10
Boys' Shovels.....	30-31	Detachable Handle Shovels (see Automobile Shovels).....	30-31
Boys' Spades.....	52-53	Dexter Brand.....	12
Breakdown Scoops.....	66-67	Diamond Point Breakdown Scoops	66-67
Brick Shovels.....	32-33	Diamond Point Coaling Scoops.	66-67
Burlapping.....	4	Diamond Point Spades.....	52-53
Byrne Brand.....	12	Dimensions.....	72-73
		Ditch Spades.....	50-51
C		Ditching Shovels.....	30-31
Carpenter Brand.....	14	Drain Spades.....	50-51
Carr Brand.....	12	Drainage Tools.....	50-51
Carter Brand.....	10-11	Drednot Brand.....	8-9

AMES SHOVEL AND TOOL COMPANY

E	PAGE	H (Cont'd)	PAGE
Eastern Pattern Breakdown Scoops	66-67	Hollow Back Ore Shovels	38-39
Eastern Pattern Scoops	56-57	Hollow Back Sand or Gravel Scoops	60-61
Eastern Pattern Telegraph Spoons	44-45	Hollow Back Scoops	56-67, inc.
Enduro Brand	10-11	Hollow Back Shovels	24-25
Excelsior Brand	12	Holmes Brand	10
Extra Grade	8-9	Holton Brand	10
F		I	
Falls City Brand	14-15	Ideal Brand	12
Favorite Brand	14	I-D-L Metal Dee Handles	70-71
Finish (Extra)	4	Intermediate Grade	12-13
Fisher Brand	10	Iowa Pattern Spades	52-53
Flint Edge Brand	8-9	Irrigating Shovels	34-35
Foreword	3		
Freeman Brand	14	J	
Full Spring Point Mining Shovels	32-33	Jack Pattern Scoops	56-57
Furnace Scoops	62-63		
G		K	
Garden Spades	48-49	Keeler Brand	12-13
Gold Ribbon Brand	14-15	Knob End Long Handles	70
Gordon Brand	12		
Grades	5-6-8-10-12-14	L	
Grafting Spades	54-55	Labels (Brands)	5-15, inc.
Grain Pattern Scoops	58-59	Ladies' Shovels (see Boys' Shovels)	30-31
Grain Trimmer Scoops	60-61	Ladies' Spades (see Boys' Spades)	52-53
Gravel Scoops	60-61	Lane Brand	12
Griffiths Brand	10-11	Lee Brand	12-13
Grifrow Brand	14-15	Light Weight, Long Handle, Round Point Shovels	42-43
Guaranty	2	Lime Shovels	30-31
H		Locomotive Scoops (see Eastern Pattern Scoops)	56-57
Hadwin Brand	12	Long Handles	70
Half Spring Point Mining Shovels	32-33	Long Handle Scoops	56-67, inc.
Handles	70-71	Long Handle Shovels	16-47, inc.
Harlan Brand	12	Long Handle Spades	48-55, inc.
Helmet Brand	12-13	Long Handle Snow Shovels	40-41
High Grade	10-11	Low Lift Ash Pan Scoops	64-65
Hollow Back Breakdown Scoops	66-67	Low Lift Charging Scoops	60-61
Hollow Back Coal Shovels	46-47		
Hollow Back Furnace Scoops	62-63		

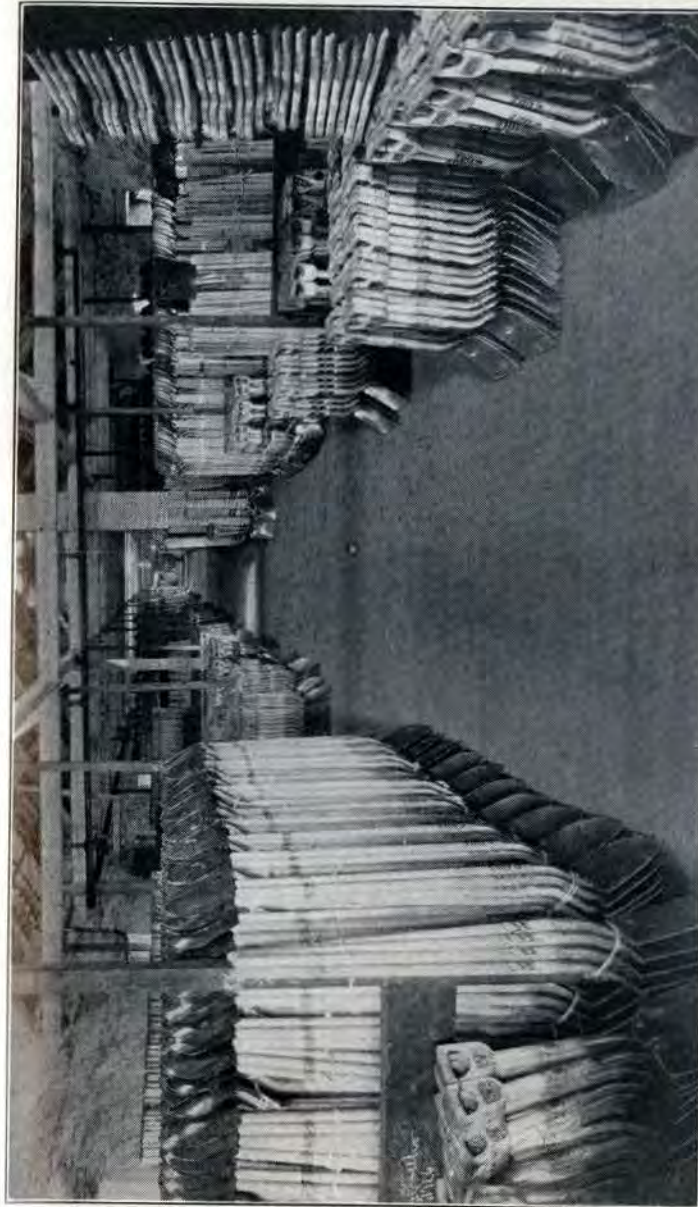
AMES SHOVEL AND TOOL COMPANY

M	PAGE	P (Cont'd)	PAGE	
Malleable Peening Dee Handles	70-71	Plain Back Shovels (One Piece type)	20-21	
Malleable Tamping Dee Handles	70-71	Plain Back Shovels (Steel Edge type)	26-27	
Massachusetts Brand	14-15	Plain Back Shovels (Welded type)	16-17	
Master Brand	14	Porter Brand	10-26	
Meteor Brand	14	Post Spades	50-51	
Method of Measuring	72-73	Pressed Steel Dee Handles	70-71	
Method of Ordering	74	Prices	4	
Miller Brand	14			
Miniature Wood Dee Handles	70-71	R		
Mining Shovels	32-33	Railroad Shovels	36-37	
Moon Brand	14	Reed Brand	10	
Moulder Shovels	28-29	Rice Shovels	34-35	
Myers Brand	10-11	Riveted Back Breakdown Scoops	66-67	
Myers Patent (see One Piece Plain Back)	20	Riveted Back Furnace Scoops	62-63	
N		Riveted Back Mining Shovels	32-33	
Narrow Point Grafting Spades	54-55	Riveted Back Railroad or Track Shovels	36-37	
Naylor Brand	14	Riveted Back Scoops	56-67, inc.	
Nicholson Brand	12-13	Riveted Back Shovels	22-23	
Nursery Spades	54-55	Riveted Back Snow Shovels	40-41	
O		Round Mouth Sand or Gravel Scoops	60-61	
Old Style Snow Shovels	40-41	Round Point Ditching Shovels	30-31	
Oliver Ames Grade or Brand	6-7	Round Point Scoops	56-57	
One Piece Shovels	20-21	Round Point Shovels	16-47, inc.	
Orders	4-74	Rowland Brand	12	
Ore Shovels	38-39			
Oyster Scoops	62-63	S		
P		St. Louis Brand	8-9	
Packer Brand	12	Sand Scoops	60-61	
Packing	4	Sanderson Brand	10	
Peening Handles	70-71	Scoop Handles	70-71	
Peerless Brand	14-15	Scoops	56-67, inc.	
Penn Brand	14	Sellers Brand	14	
Perforated Concrete Spades	52-53	Sewer Shovels	32-33	
Perforated Irrigating or Rice Shovels	34-35	Shipments	4	
Pilgrim Brand	12	Shovel Handles	70-71	
			Shovels	16-47, inc.

AMES SHOVEL AND TOOL COMPANY

S (Cont'd)	PAGE	T (Cont'd)	PAGE
Sidewalk Cleaners.....	68-69	Terms.....	4
Sidewalk Scrapers.....	68-69	Thomas Brand.....	14
Small Socket Hollow Back Scoops	58-59	Thor Brand.....	8-9
Snow & Ice Handling Tools.....	68-69	Thorn Brand.....	12
Snow Pushers.....	68-69	Track Shovels.....	36-37
Snow Shovels.....	40-41	Tricor Shovels.....	38-39-46-47
Sod Pit Shovels.....	42-43	Tri-Me Brand.....	14
Solid Shank Irrigating Shovels...	34-35	Trimmer Scoops.....	60-61
Solid Shank Railroad or Track		Tunnelling Shovels (see Sewer	
Shovels.....	36-37	Shovels).....	32-33
Solid Shank Rice Shovels.....	34-35	Two Strap Solid Socket Railroad	
Solid Shank Shovels.....	18-19	or Track Shovels.....	36-37
Solid Shank Spades.....	48-55, inc.		
Solid Socket Shovels.....	18-19	U	
Spade Handles.....	70-71	Union Shovel Co. Brand.....	14
Spades.....	48-55, inc.		
Spading Shovels.....	30-31	V	
Special Construction.....	4	Valley Forge Brand.....	12-13
Split Dee Handles.....	70-71	Vaterland Brand.....	10
Split Socket Shovels.....	18-19	Vaterland Spades.....	52-53
Spoon Handles.....	70	Vigo Brand.....	14
Spoons.....	44-45	Vim Brand.....	12-13
Square Point Shovels.....	16-17, inc.		
Steel Edge Shovels.....	26-27	W	
Steel Edge Spades.....	48-49	Wayde Brand.....	14
Steel Handle Scoops.....	64-65	Weber Brand.....	12
Stiff Point Mining Shovels.....	32-33	Webster Brand.....	12
Stone Brand.....	14	Welded Plain Back — see Plain	
Strap Shovels—see Plain Back—		Back	
Steel Edge — Riveted Back		Western Pattern Breakdown	
Sturd-E Dee Handles.....	70-71	Scoops.....	66-67
Sunken Back Shovels.....	36-37	Western Pattern Coaling Scoops..	66-67
Sycamore Brand.....	14-15	Western Pattern Scoops.....	58-59
		Western Union Pattern Telegraph	
		Spoons.....	44-45
		Wide Point Grafting Spades.....	54-55
		Wilson Brand.....	12
		Wood Dee Handles.....	70-71
		Wrighto Brand.....	10-11
		Wright Shovel Co. Brand.....	12
		Wright's Extra Brand.....	10
		X	
		XXX Brand.....	14

AMES SHOVEL AND TOOL COMPANY



One of the Store Rooms at North Easton, Massachusetts, where over 150,000 Factory Brand Shovels, Spades and Scoops are carried for quick delivery to our customers.

AMES SHOVEL AND TOOL COMPANY



Ames Building, Boston, Massachusetts
Location of Executive Offices of the
Ames Shovel and Tool Co.

PRINTED IN U.S.A.